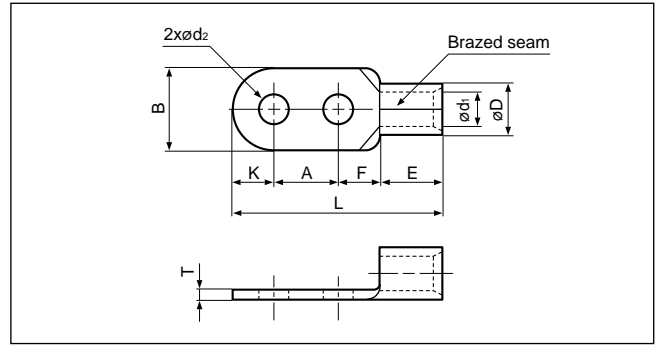


Solderless terminals

DOUBLE HOLES (RD type)



JQ0608019

Certificate No.: E42024

LR20812

JQID08002
JIS C 2805

Applicable Wire AWG#(mm ²)	Stud size		Part No.	Standard	Dimensions mm (in.)									Tool No.						Qty/box
	American	Metric			ød ₂	B	L	F	A	K	E	øD	ød ₁	T	YA-5	YPT-60N	YPT-150-1	E-4,YF-1	E-4,YF-1	
2 (26.66 to 42.42)	3/8	10	RD38-10		11.0 (.433)	22.0 (.866)	84.0 (3.307)	28.0 (1.102)	32.0 (1.260)	10.0 (.394)	14.0 (.551)	13.3 (.524)	9.4 (.370)	1.8 (.071)	0	0	0	0	0	50
	7/16	10	RD38-12		14.0 (.551)	22.0 (.866)	84.0 (3.307)	20.0 (.787)	40.0 (1.575)	10.0 (.394)										
1/0 (42.42 to 60.57)	3/8	10	RD60-10		11.0 (.433)	22.0 (.866)	78.0 (3.071)	17.0 (.669)	32.0 (1.260)	11.0 (.433)	18.0 (.709)	15.5 (.610)	11.4 (.499)	2.0 (.079)	0	0	0	0	0	50
	7/16	12	RD60-12		14.0 (.551)	22.0 (.866)	89.0 (3.504)	20.0 (.787)	40.0 (1.575)	11.0 (.433)										
	1/2	14	RD60-14		16.0 (.630)	32.0 (1.260)	95.0 (3.740)	21.0 (.827)	40.0 (1.575)	16.0 (.630)										
2/0 (60.57 to 76.28)	3/8	10	RD70-10		11.0 (.433)	24.0 (.945)	80.0 (3.150)	17.0 (.669)	32.0 (1.260)	12.0 (.472)	19.0 (.748)	17.5 (.689)	13.3 (.524)	2.0 (.079)		0	0	0	0	25
	7/16	12	RD70-12		14.0 (.551)	24.0 (.945)	91.0 (3.583)	20.0 (.787)	40.0 (1.575)	12.0 (.472)										
3/0 (76.28 to 96.3)	3/8	10	RD80-10		11.0 (.433)	27.0 (1.063)	82.5 (3.248)	17.0 (.669)	32.0 (1.260)	13.5 (.532)	20.0 (.787)	19.5 (.768)	14.5 (.571)	2.3 (.091)		0	0	0	0	25
	7/16	12	RD80-12		14.0 (.551)	27.0 (1.063)	94.2 (3.709)	20.7 (.815)	40.0 (1.575)	13.5 (.532)										
4/0 (96.3 to 117.2)	3/8	10	RD100-10		11.0 (.433)	28.5 (1.122)	84.3 (3.319)	17.0 (.669)	32.0 (1.260)	14.3 (.563)	21.0 (.827)	22.3 (.878)	16.4 (.646)	2.6 (.102)		0	0	0	0	25
	7/16	12	RD100-12		14.0 (.551)	28.5 (1.122)	95.5 (3.760)	20.2 (.795)	40.0 (1.575)	14.3 (.563)										
	1/2	14	RD100-14		16.0 (.630)	32.0 (1.260)	98.0 (3.858)	21.0 (.827)	40.0 (1.575)	16.0 (.630)										
250/300MCM (117.2 to 152.05)	7/16	12	RD150-12		14.0 (.551)	36.0 (1.417)	106.0 (4.173)	21.0 (.827)	40.0 (1.575)	18.0 (.709)	27.0 (1.063)	26.5 (1.043)	19.5 (.768)	3.2 (.126)		0	0	0	0	20
	1/2	14	RD150-14		16.0 (.630)	36.0 (1.417)	106.0 (4.173)	21.0 (.827)	40.0 (1.575)	18.0 (.709)										
350MCM (152.05 to 192.6)	7/16	12	RD180-12		14.0 (.551)	38.5 (1.516)	108.8 (4.284)	21.0 (.827)	40.0 (1.575)	19.3 (.760)	28.5 (1.122)	28.5 (1.122)	21.0 (.827)	3.5 (.138)				0	0	20
	1/2	14	RD180-14		16.0 (.630)	38.5 (1.516)	108.8 (4.284)	21.0 (.827)	40.0 (1.575)	19.3 (.760)										
400MCM (192.6 to 242.27)	7/16	12	RD200-12		14.0 (.551)	44.0 (1.732)	116.5 (4.587)	23.0 (.906)	40.0 (1.575)	22.0 (.866)	31.5 (1.240)	32.7 (1.287)	24.0 (.945)	4.0 (.157)				0	0	10
	1/2	14	RD200-14		16.0 (.630)	44.0 (1.732)	116.5 (4.587)	23.0 (.906)	40.0 (1.575)	22.0 (.866)										
NA (250)	7/16	12	RD250-12		14.0 (.551)	44.0 (1.732)	116.5 (4.587)	23.0 (.906)	40.0 (1.575)	22.0 (.866)	31.5 (1.240)	35.6 (1.402)	26.0 (1.024)	4.5 (.177)				0		10
	1/2	14	RD250-14		16.0 (.630)	44.0 (1.732)	116.5 (4.587)	23.0 (.906)	40.0 (1.575)	22.0 (.866)										
600/650MCM (242.27 to 325)	7/16	12	RD325-12		14.0 (.551)	50.5 (1.988)	123.8 (4.874)	23.0 (.906)	40.0 (1.575)	25.3 (.996)	35.5 (1.398)	37.6 (1.480)	28.0 (1.102)	4.5 (.177)				0	0	5
	1/2	14	RD325-14		16.0 (.630)	50.5 (1.988)	123.8 (4.874)	23.0 (.906)	40.4 (1.575)	25.3 (.996)										

Note:1) Products with the JIS mark conform to JIS C2805.

2) Delivery lead times may vary depending on the product. Contact JST for details.