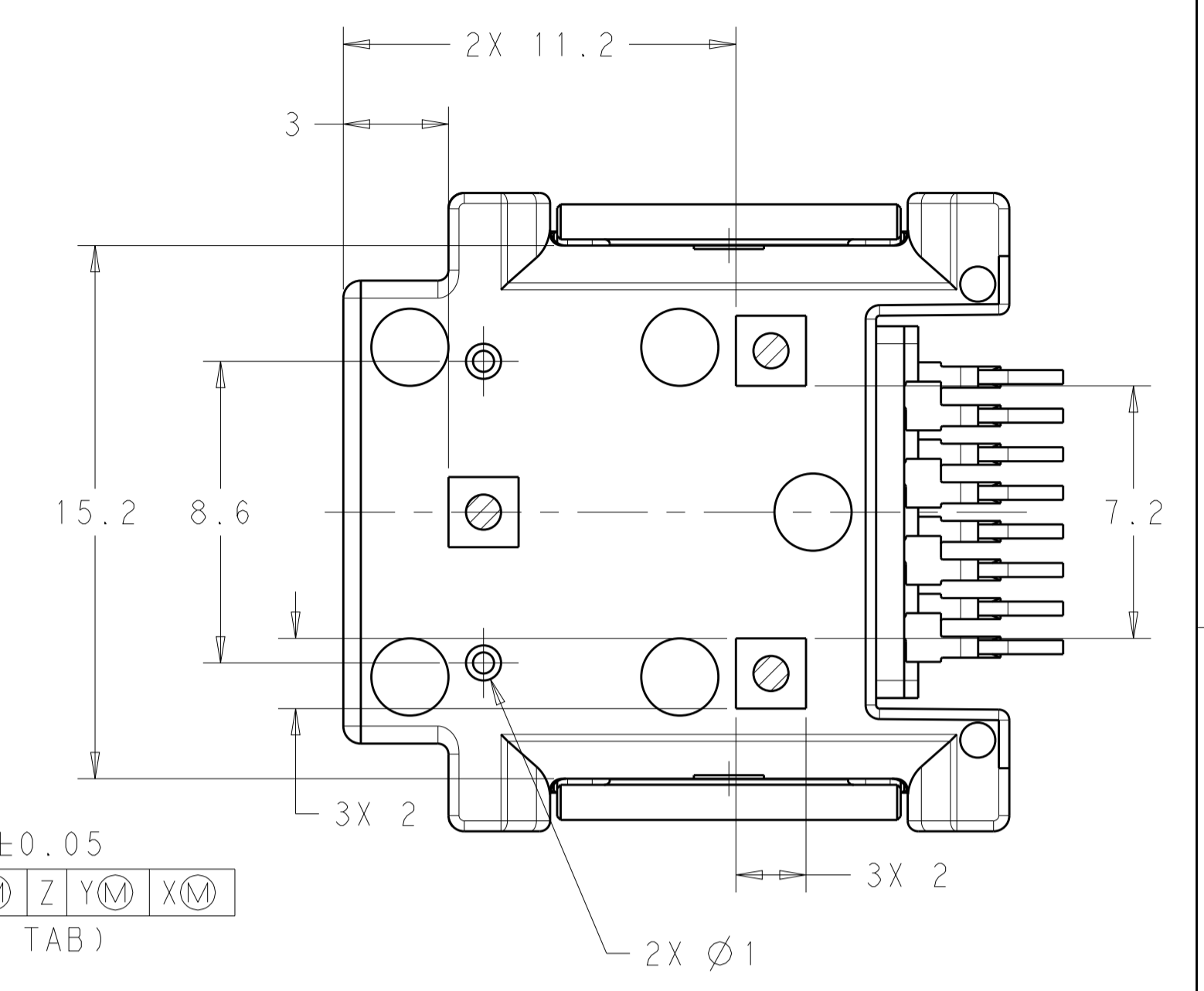
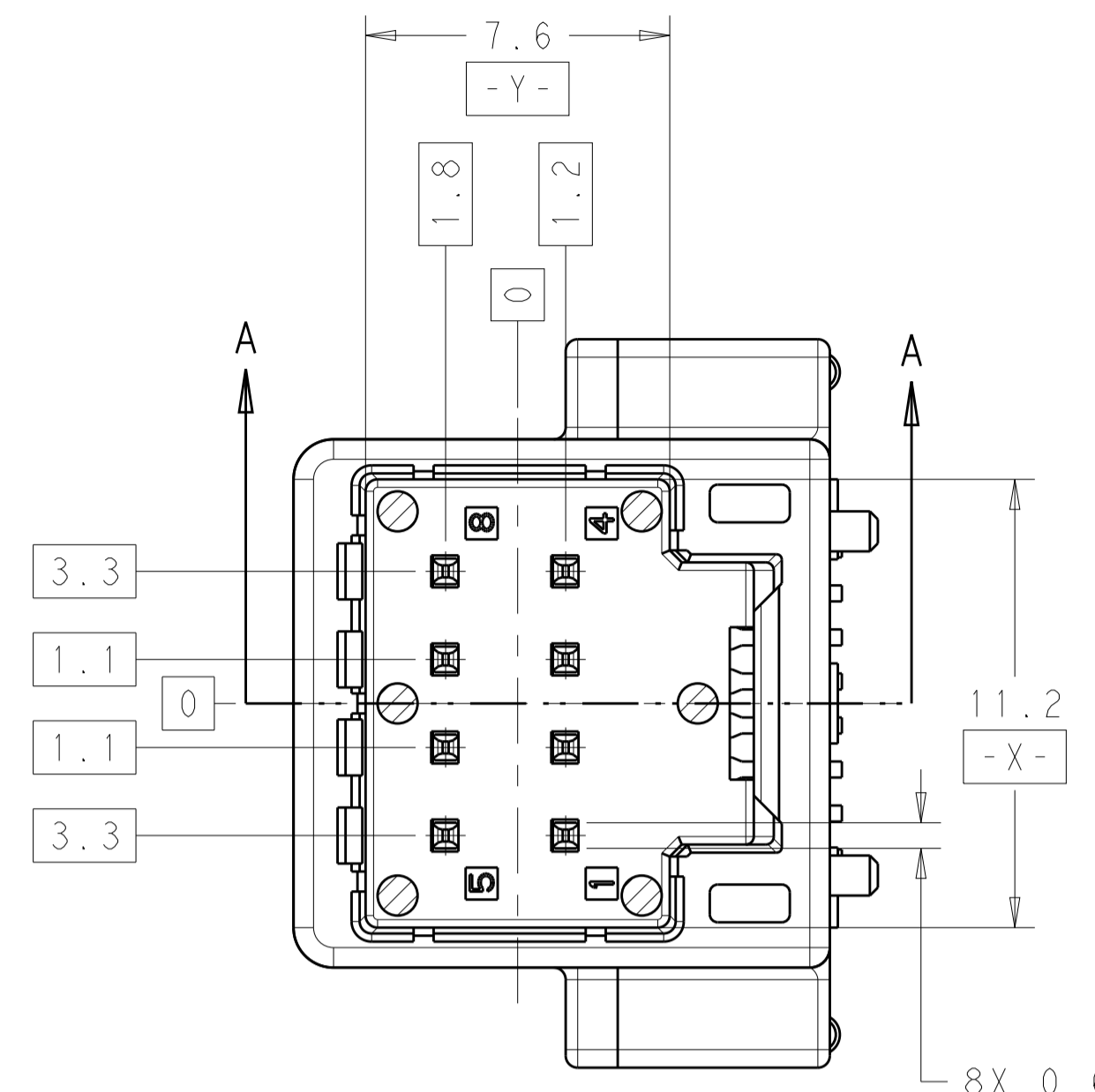
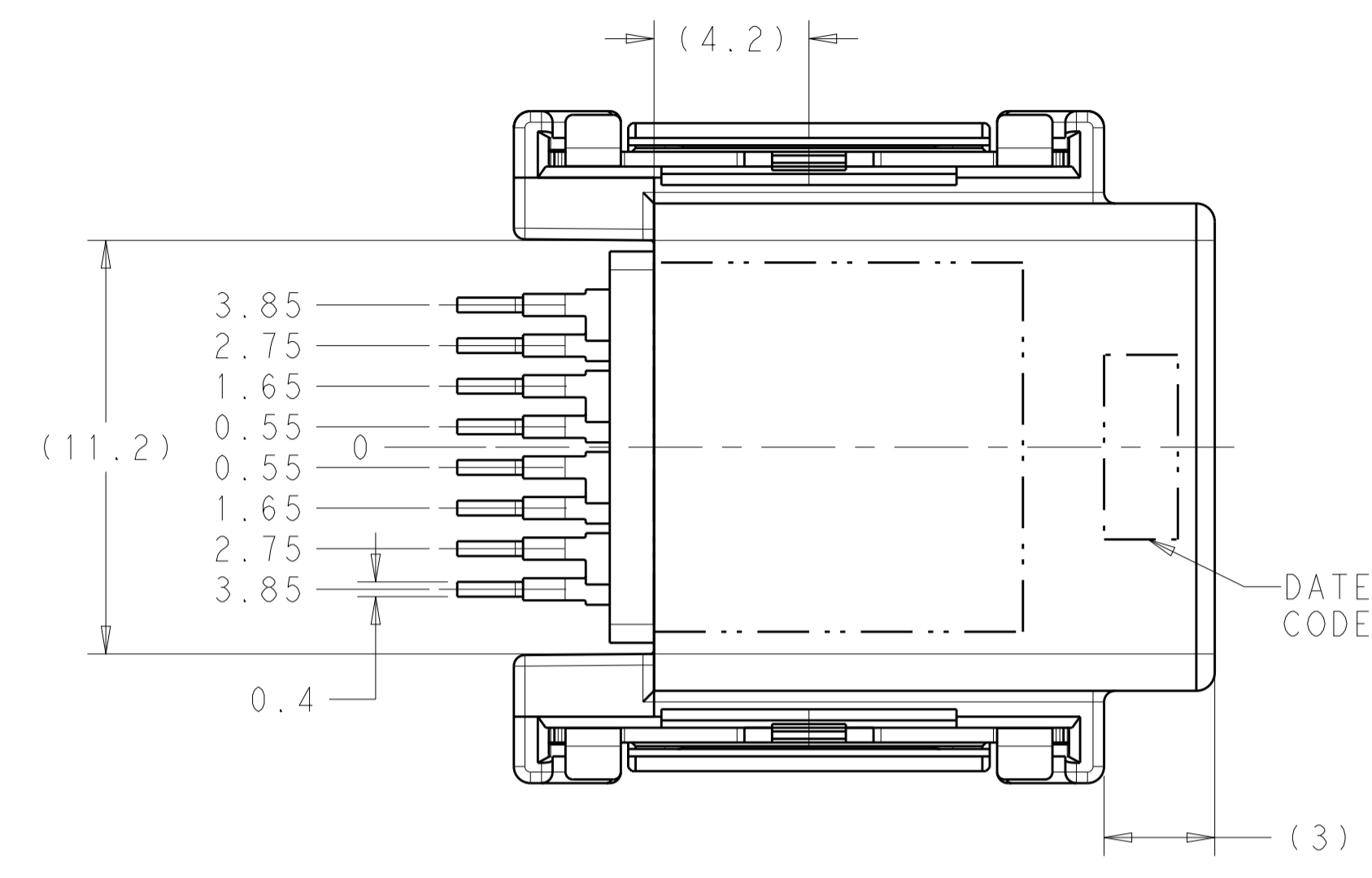
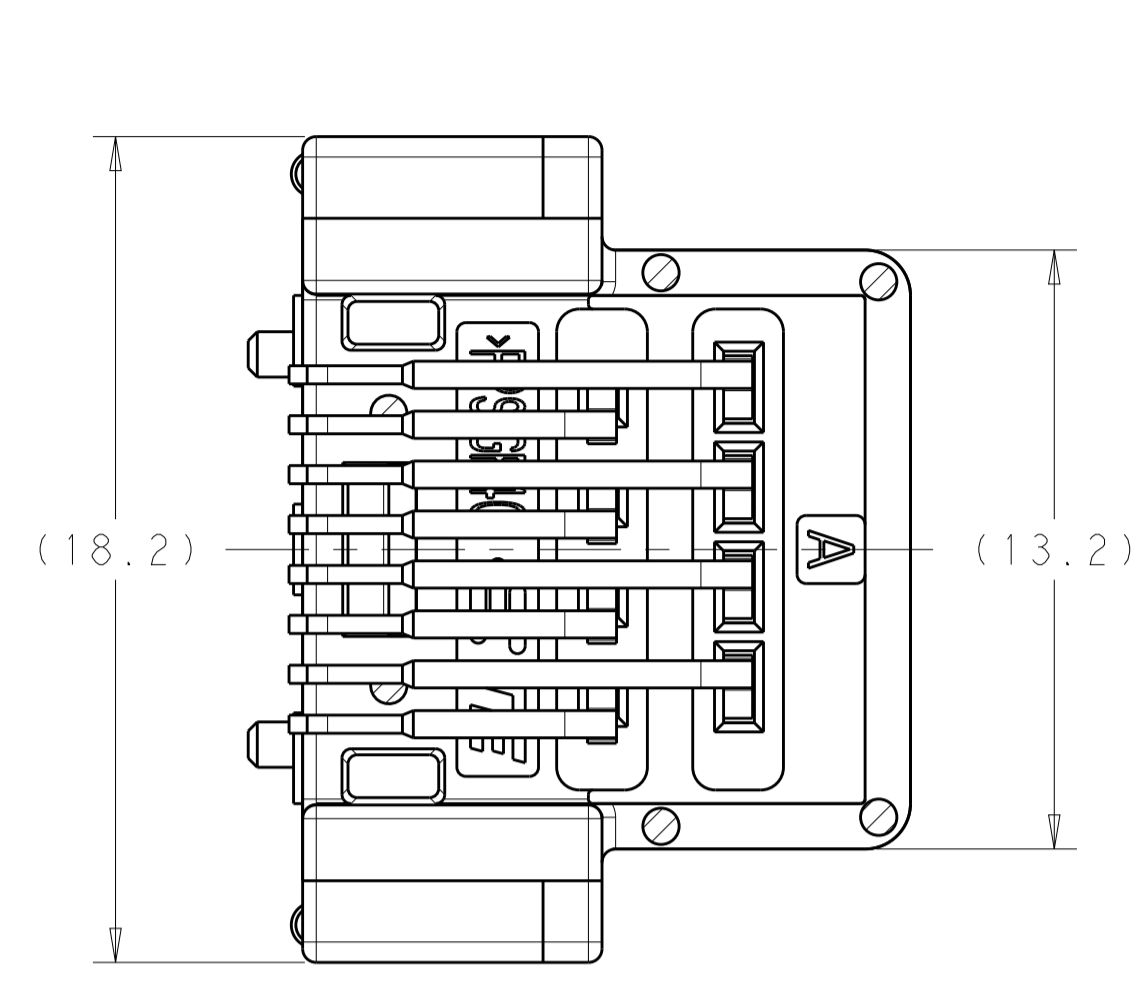
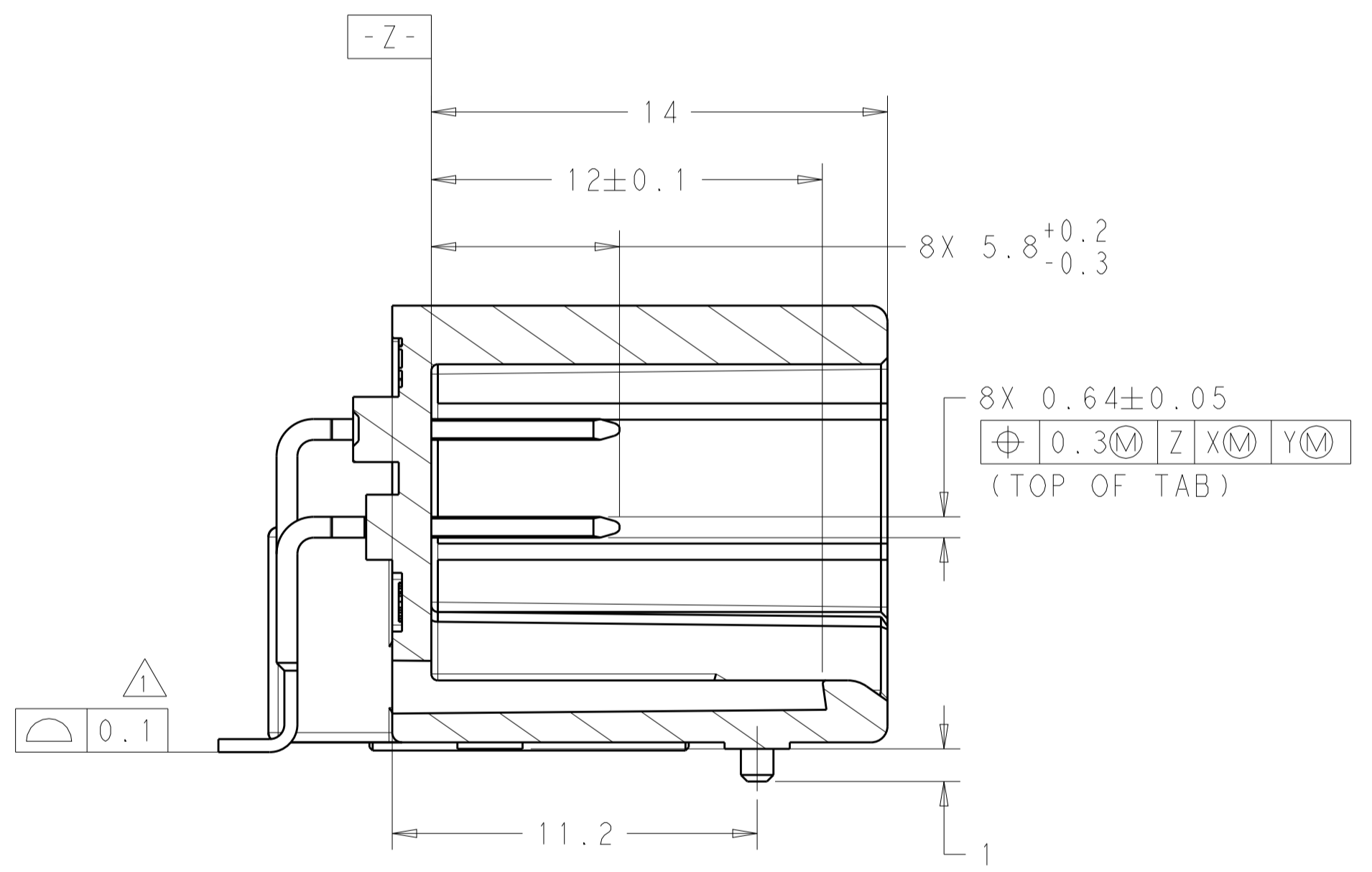


REVISIONS				
P. LTR	DESCRIPTION	DATE	DWN	APVD
A	INITIAL RELEASE	01MAR2019	JC	LSF



8X 0.64±0.05  
 ⌀ 0.3M Z Y M X M  
 (TOP OF TAB)



SECTION A-A

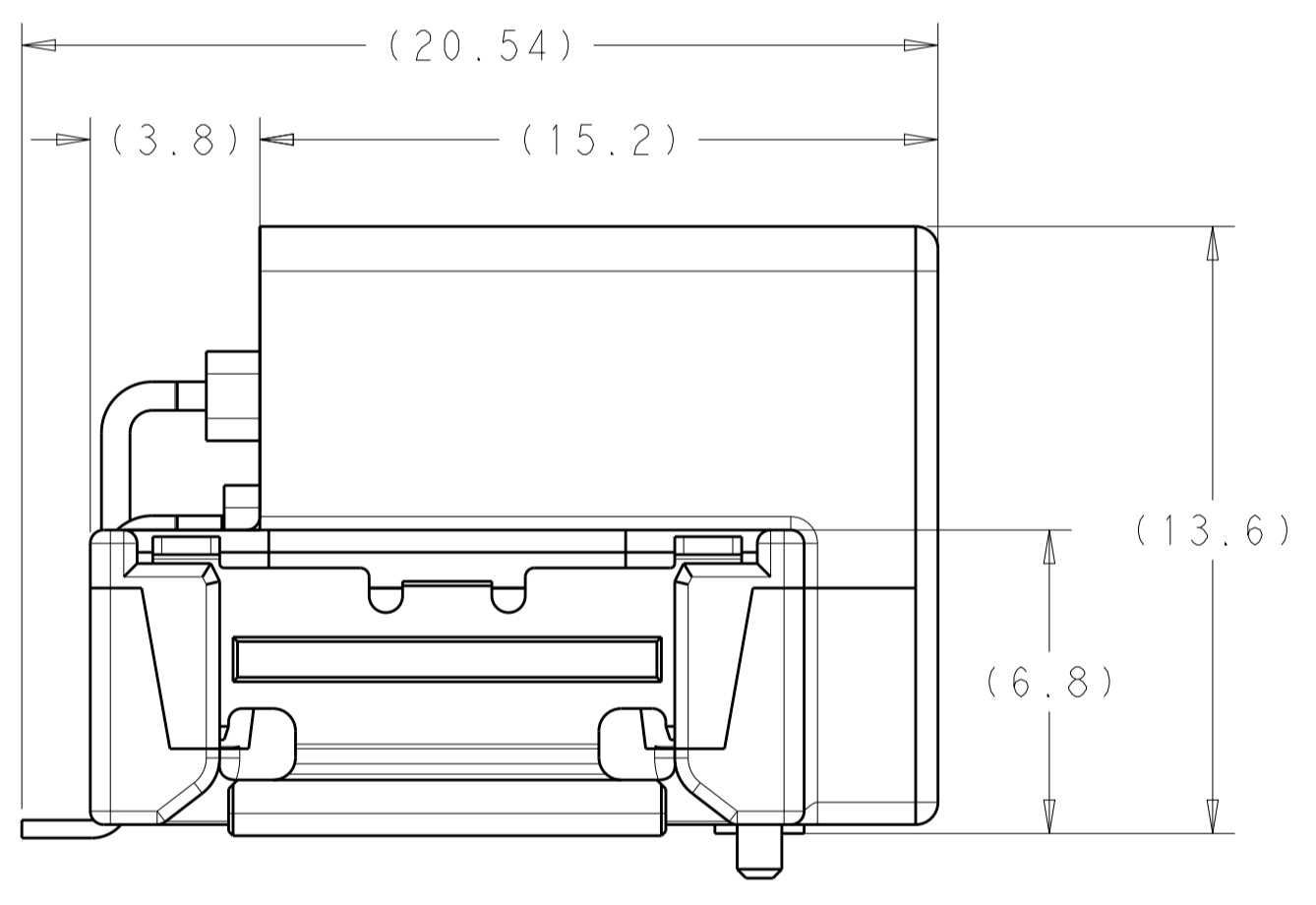
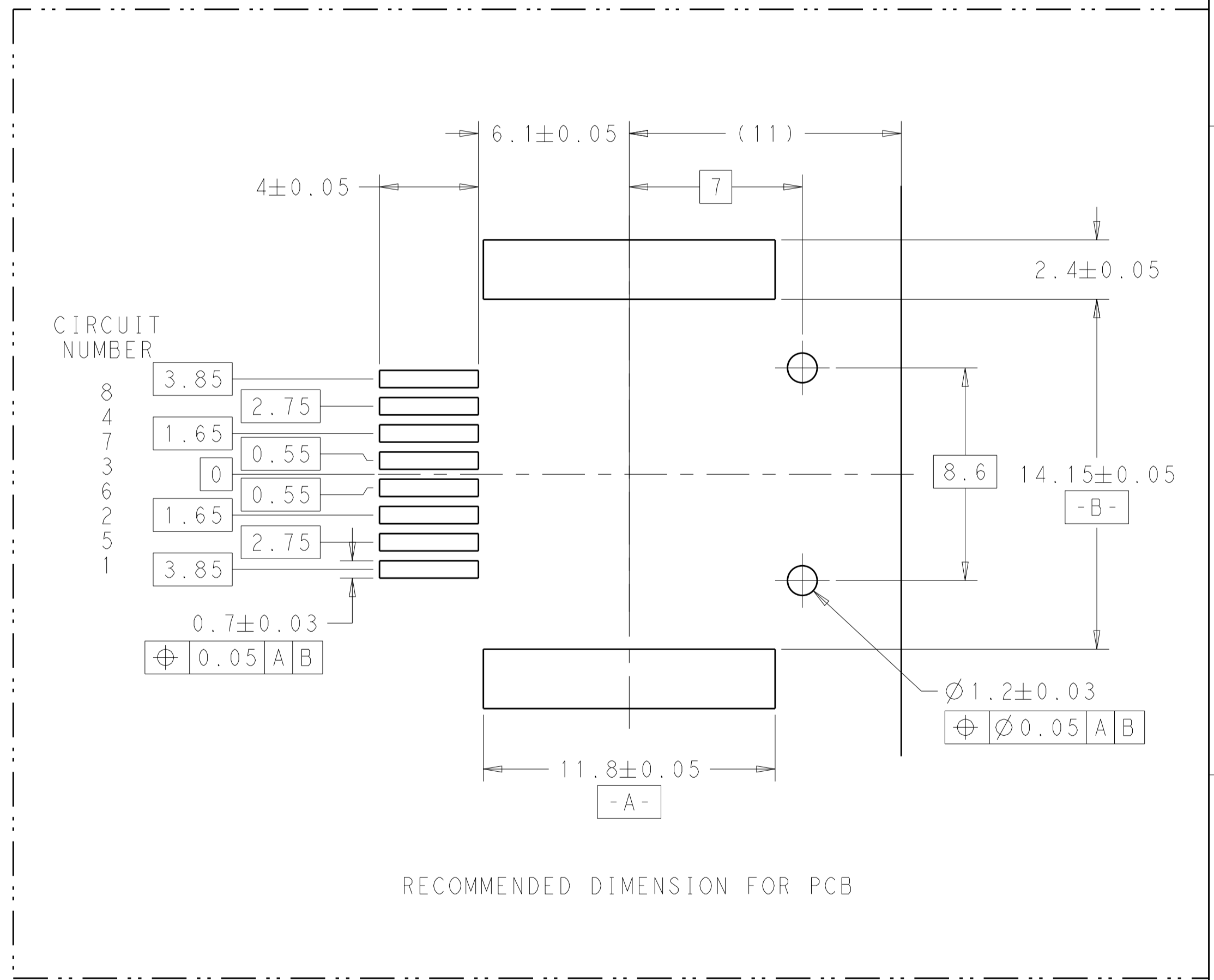
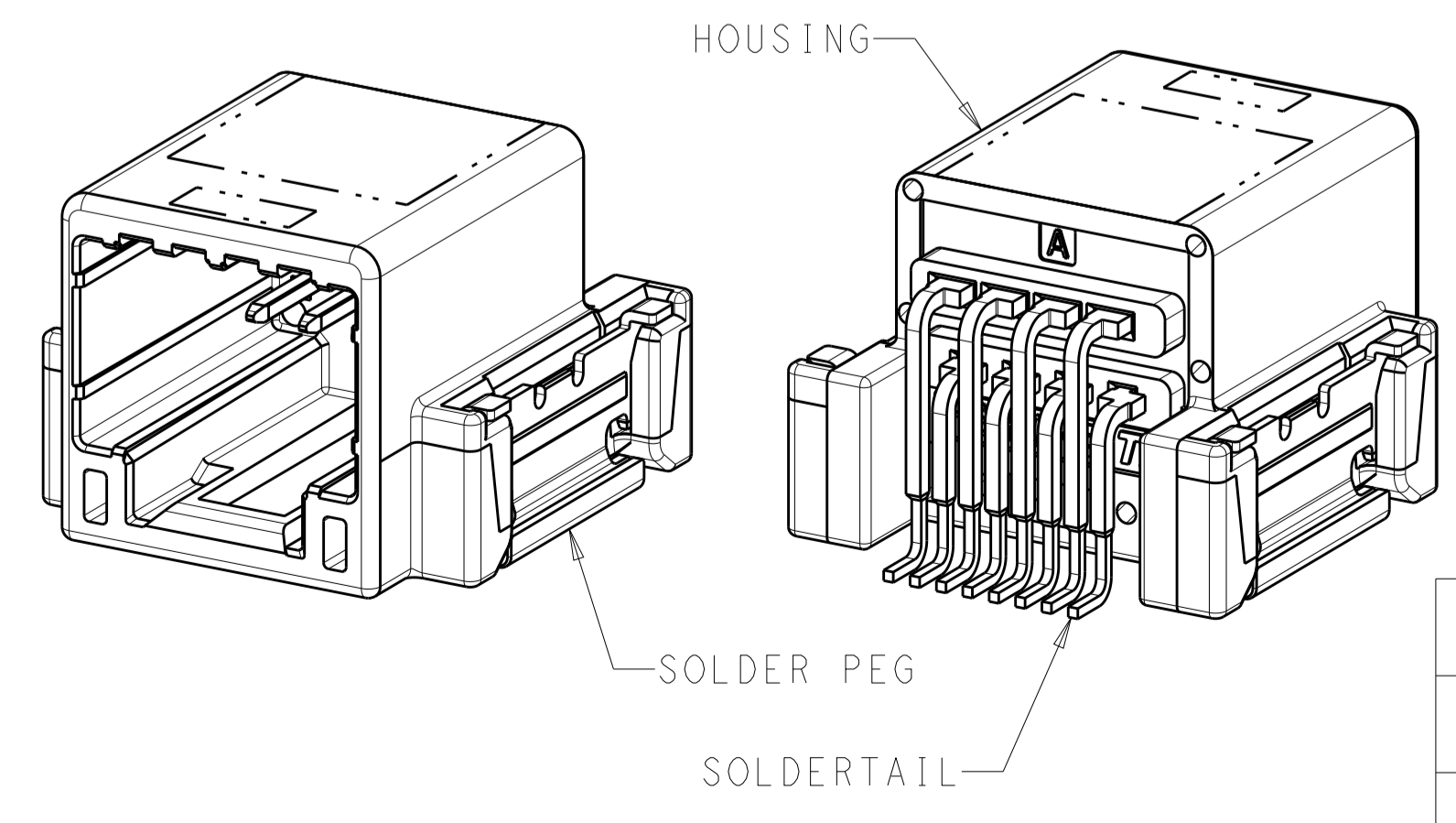


TABLE 1

POS	MATING PLUG PART NO
8	1717103
	1376352



RECOMMENDED DIMENSION FOR PCB



- NOTE:
- △ CO-PLANARITY TO INCLUDE SOLDER TAIL AND SOLDER PEG
  - 2. PART NUMBER OF MATING PLUG : SEE TABLE 1
  - 3. WHEN MOUNTING, THICKNESS OF SOLDER PASTE: 0.15mm MIN

PN: 2237149-1/-2 AS SHOWN

PACKAGING	SOLDER PEG	CONTACT	HOUSING	TE PN				
PAPER BOX	TAPE & REEL	BRASS	POST TIN	BRASS	POST TIN	PPS	BLACK	2237149-2
PAPER BOX	TRAY	BRASS	POST TIN	BRASS	POST TIN	PPS	BLACK	2237149-1
OUTER	INNER	MATERIAL	PLATING	MATERIAL	PLATING	MATERIAL	COLOR	TE PN

THIS DRAWING IS A CONTROLLED DOCUMENT.

DIMENSIONS: mm

TOLERANCES UNLESS OTHERWISE SPECIFIED:

0 PLC	±0.3
1 PLC	±0.3
2 PLC	±0.3
3 PLC	±0.3
4 PLC	±0.3
ANGLES	±0.3

MATERIAL: SEE TABLE

FINISH: SEE TABLE

WEIGHT: -

CUSTOMER DRAWING

SCALE: 6:1

SHEET 1 OF 3

REV A

PN: 2237149-1/-2 AS SHOWN

STE TE Connectivity

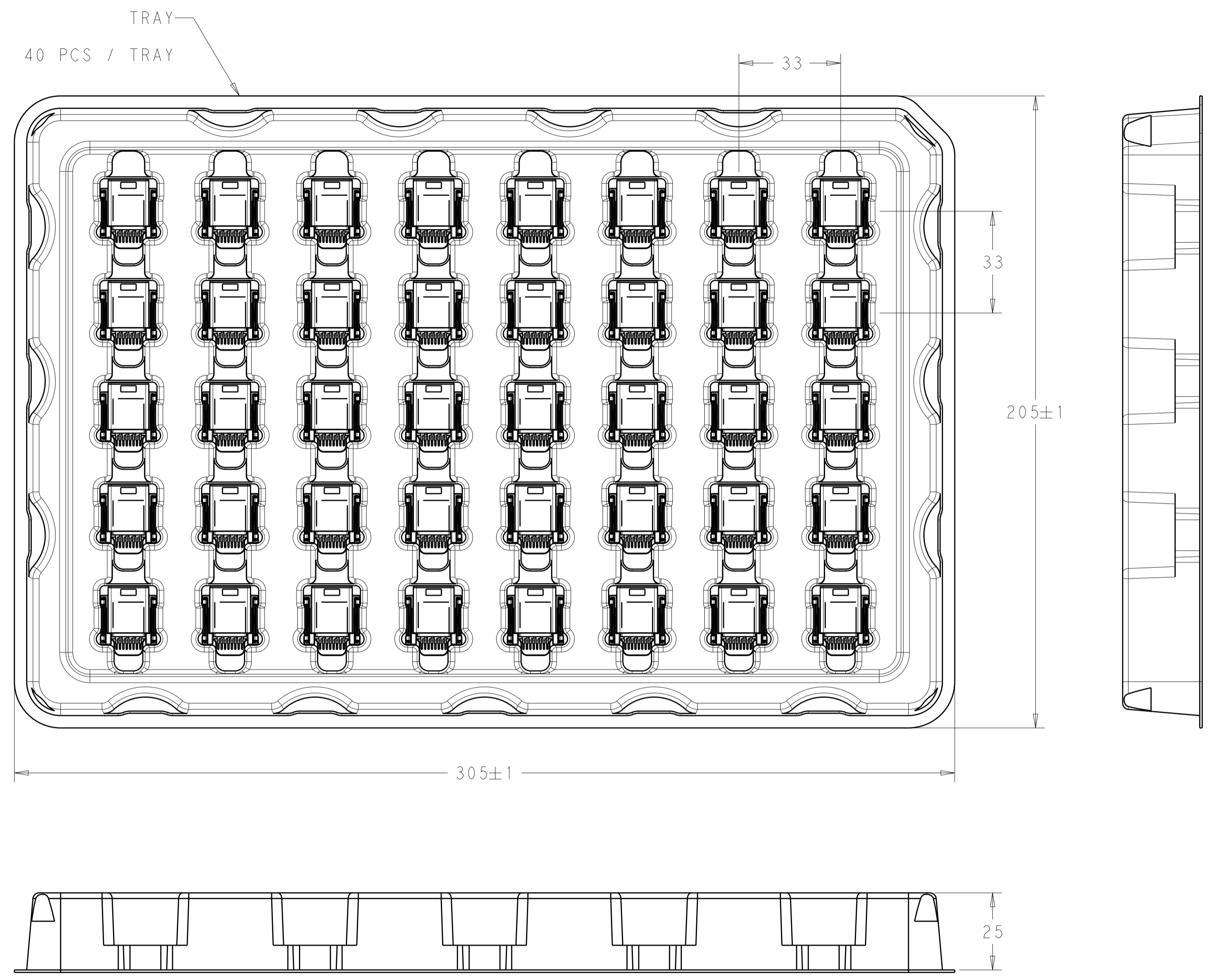
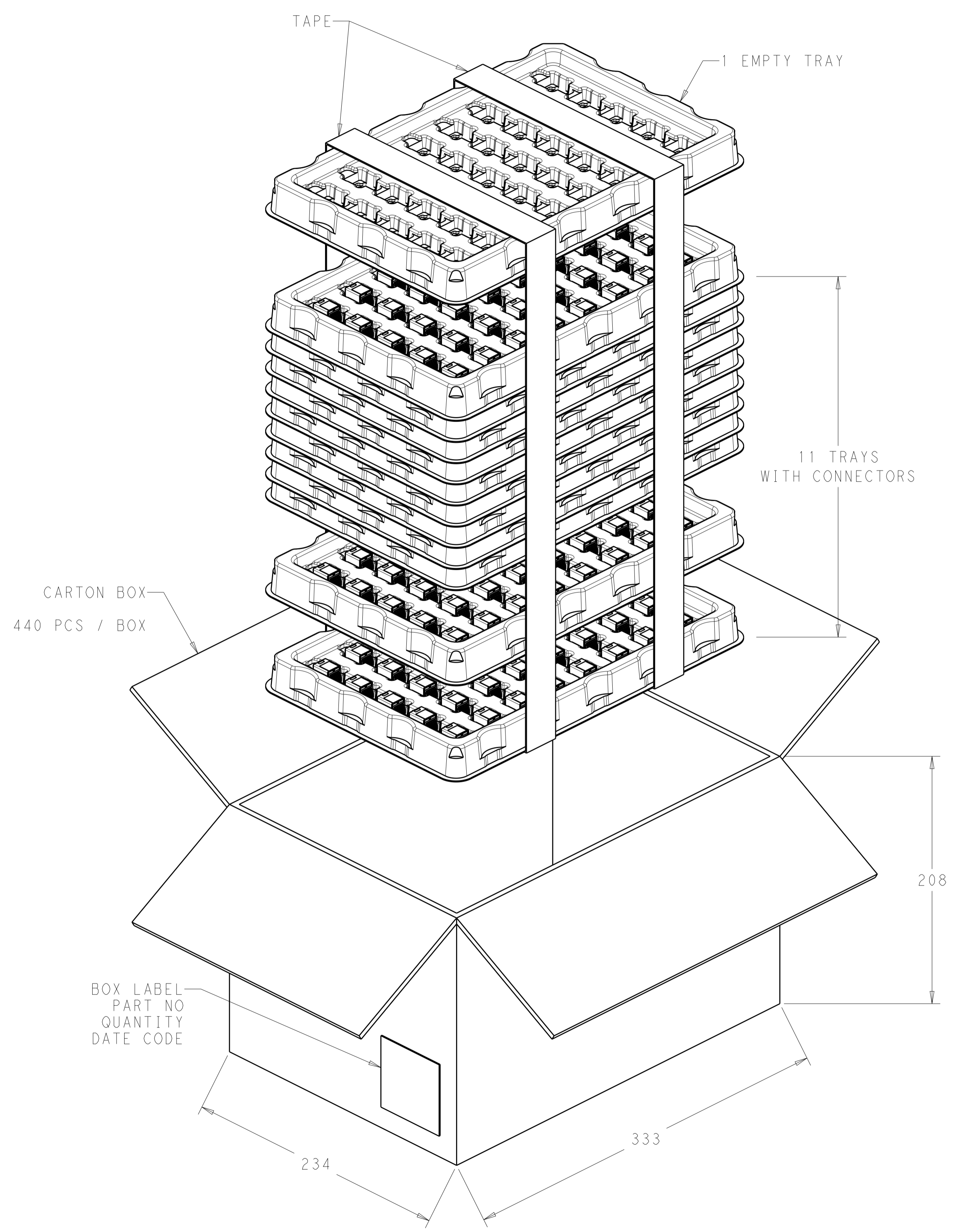
NAME: 8P 025 CAP ASSEMBLY H-TYPE SMT J-PEG REVERSE LOCK TYPE

SIZE: A1

CAGE CODE: 100779

DRAWING NO: 2237149

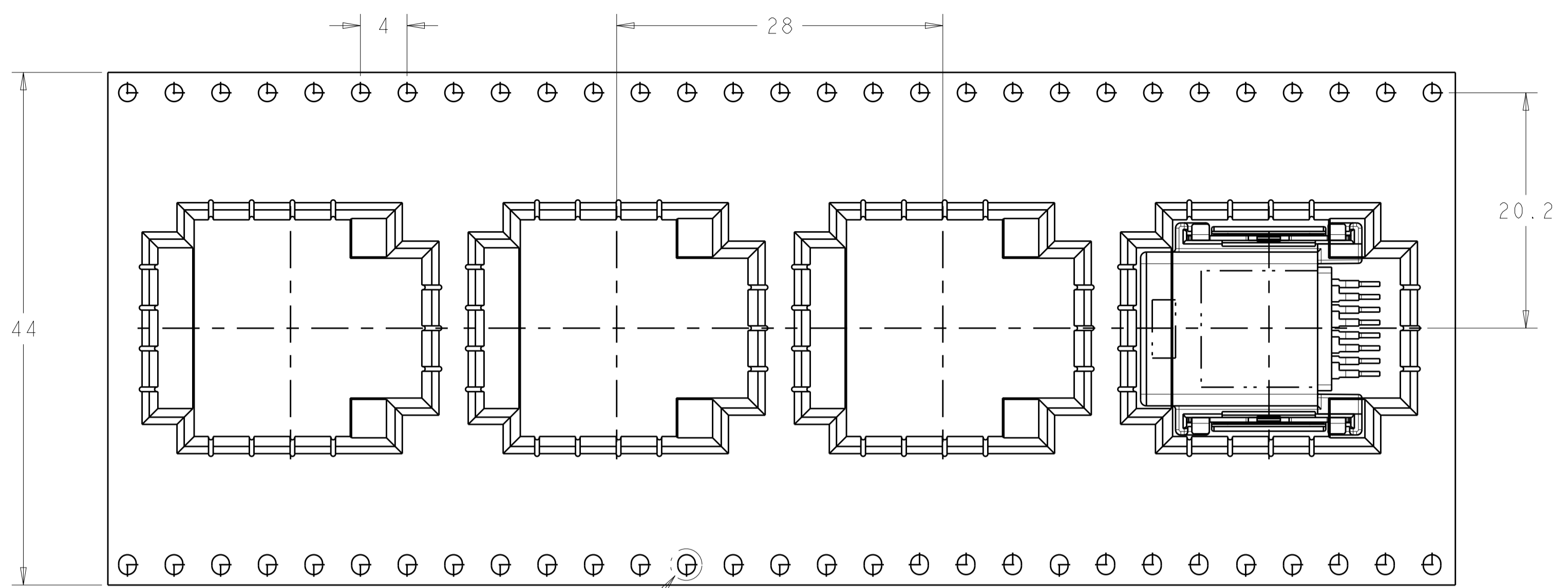
REVISIONS				
P.	LTN	DESCRIPTION	DATE	APVD
-	-	SEE SHEET 1	-	-



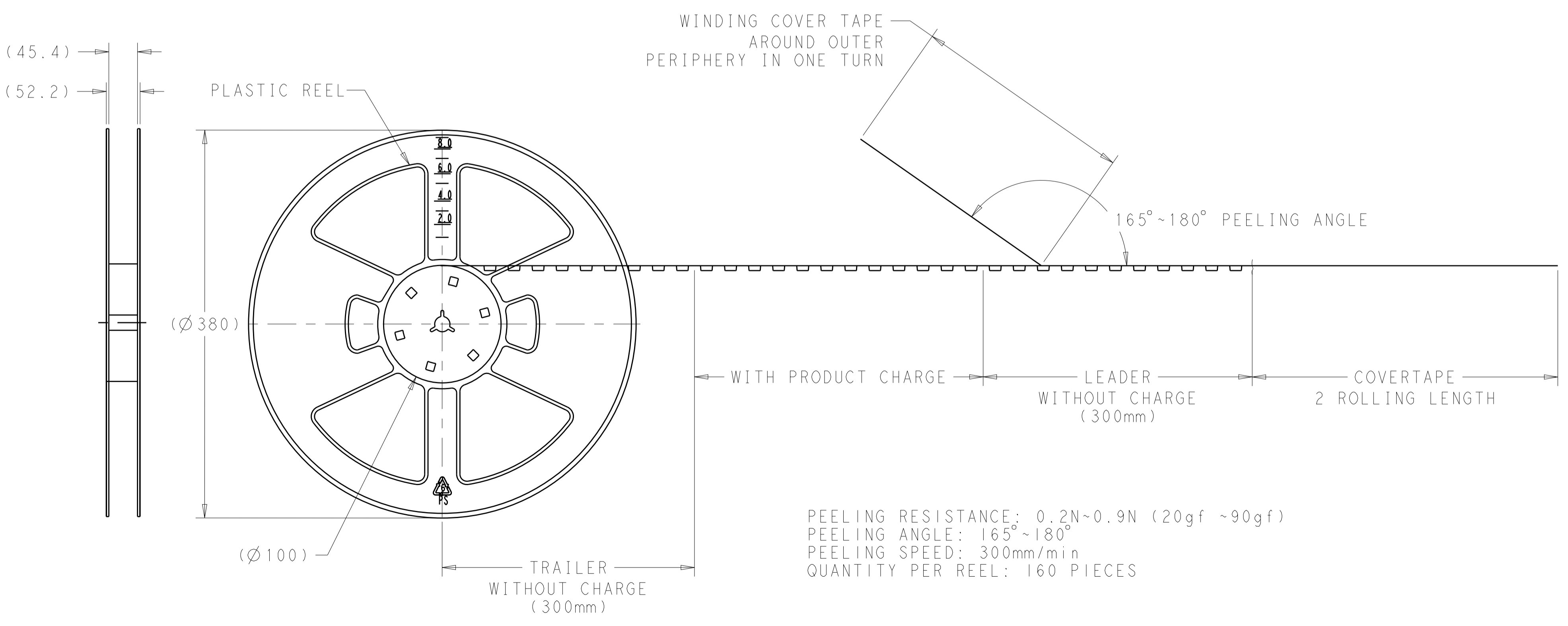
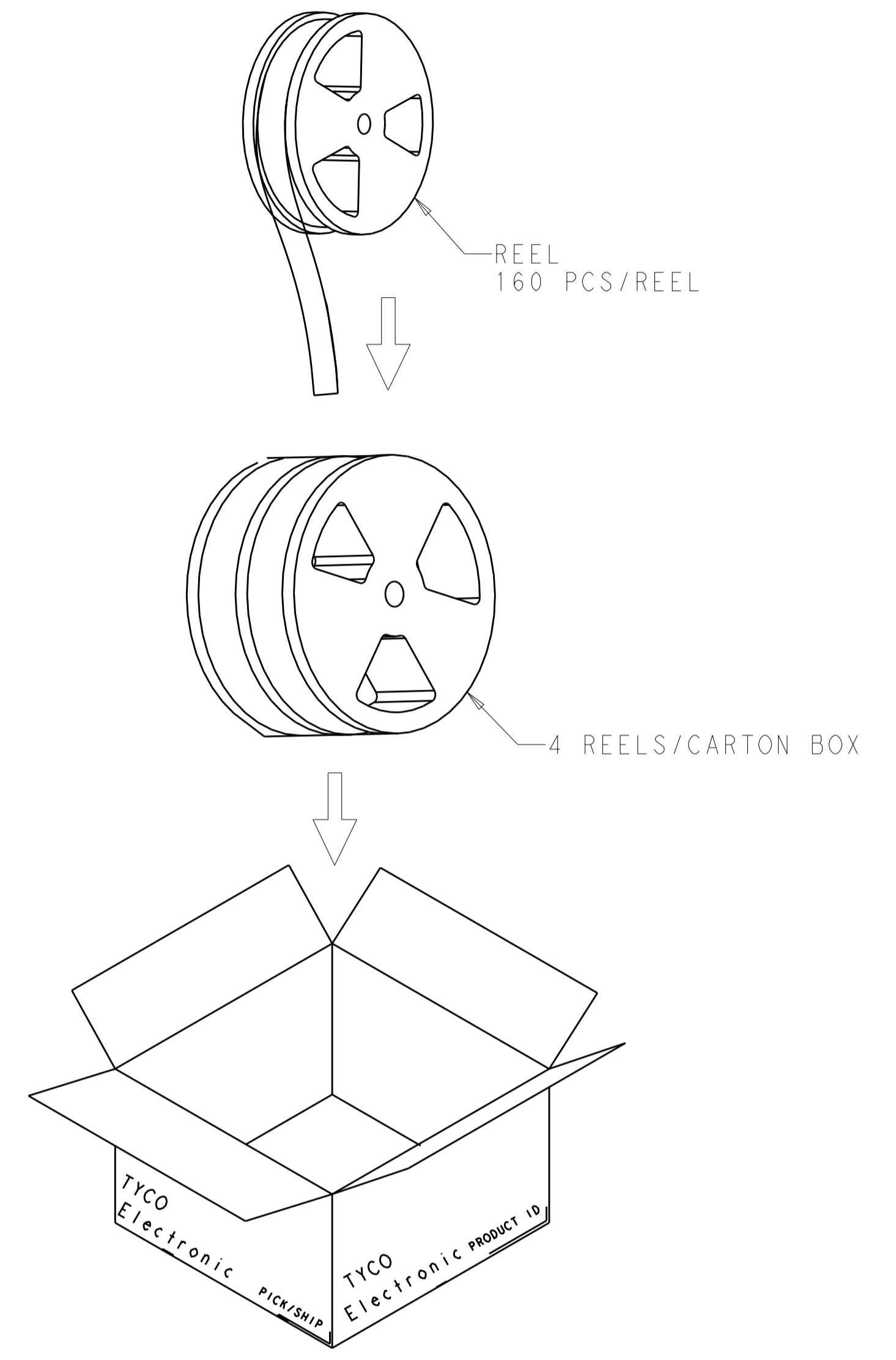
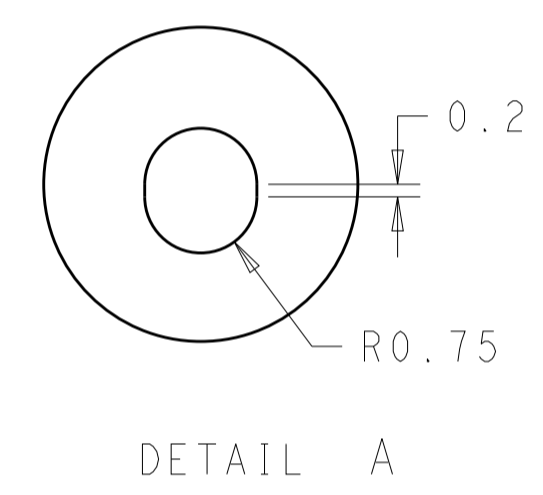
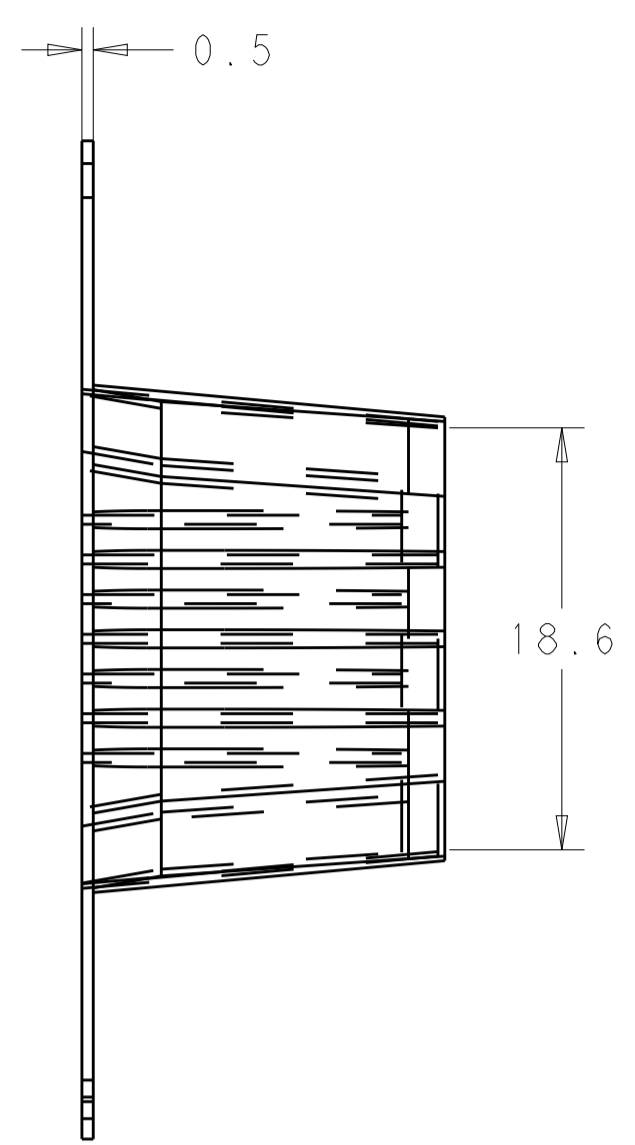
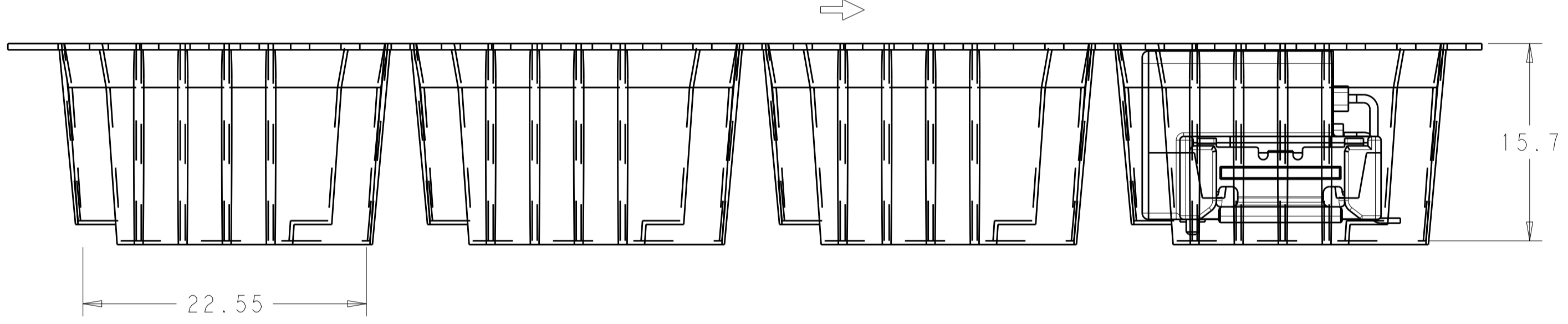
NOTE:  
 1. STACKED TRAYS TAPE UP AND PUT INSIDE CARTON BOX

THIS DRAWING IS A CONTROLLED DOCUMENT.		OWN: JASON CHOW 15JAN2019	TE Connectivity
DIMENSIONS: mm		CHK: SF LEONG 15JAN2019	
TOLERANCES UNLESS OTHERWISE SPECIFIED:		APVD: SF LEONG 15JAN2019	NAME: 8P 025 CAP ASSEMBLY H-TYPE SMT J-PEG REVERSE LOCK TYPE
0 PLC ±0.5	1 PLC ±0.5	PRODUCT SPEC	SIZE: CAGE CODE: DRAWING NO: A100779C=2237149
2 PLC ±0.5	3 PLC ±0.5	APPLICATION SPEC	RESTRICTED TO
4 PLC ±0.5	ANGLES ±0.5	WEIGHT	SCALE: NTS SHEET 2 OF 3 REV A
MATERIAL	FINISH	CUSTOMER DRAWING	

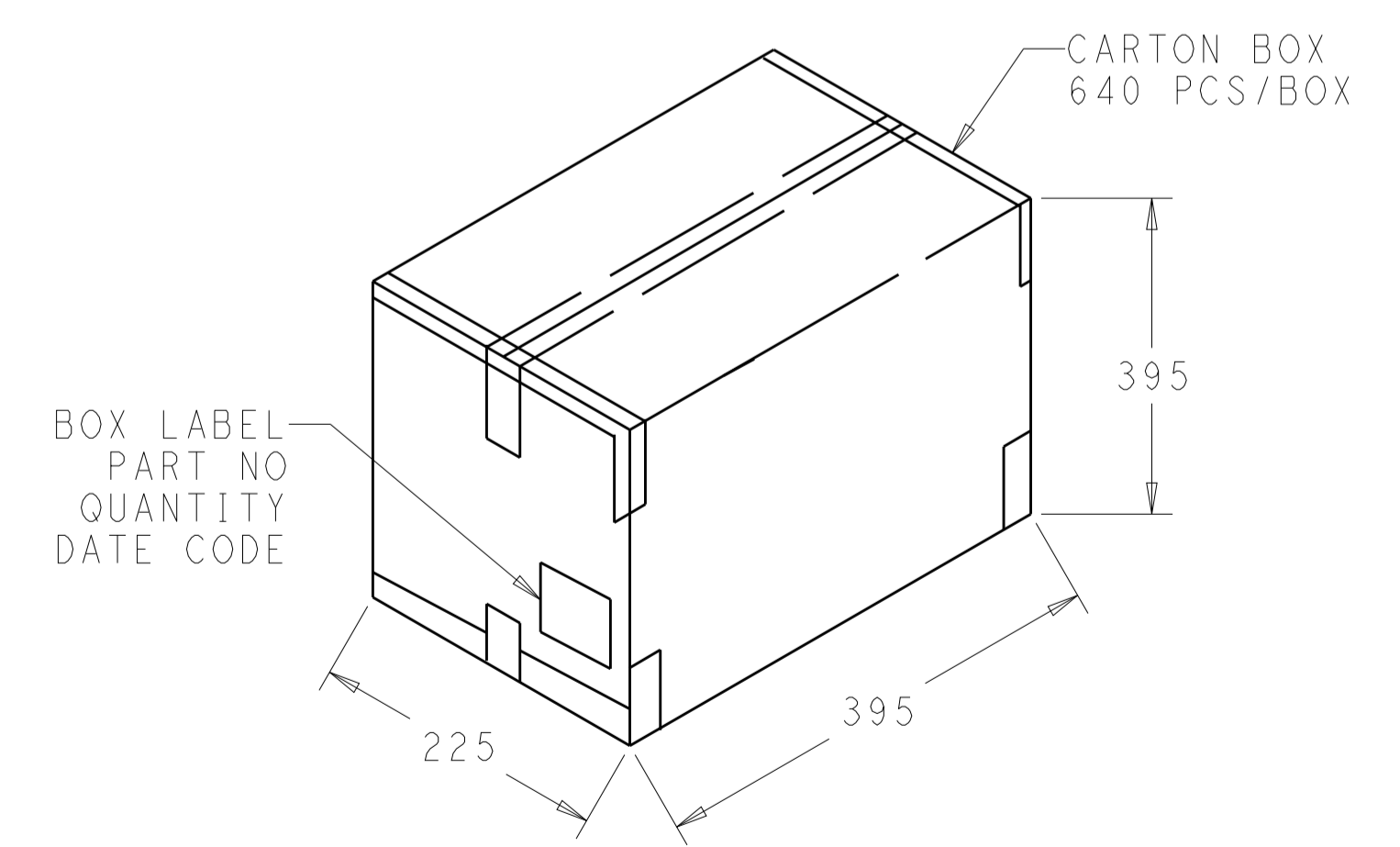
REVISIONS				
P.	LTN.	DESCRIPTION	DATE	APP'D.
-	-	SEE SHEET 1	-	-



SEE DETAIL A  
CUSTOMER DE-REEL DIRECTION



PEELING RESISTANCE: 0.2N-0.9N (20gf ~90gf)  
PEELING ANGLE: 165°~180°  
PEELING SPEED: 300mm/min  
QUANTITY PER REEL: 160 PIECES



THIS DRAWING IS A CONTROLLED DOCUMENT.		DWN: JASON CHOW 15JAN2019 CHK: SF LEONG 15JAN2019 APVD: SF LEONG 15JAN2019	<b>STE</b> TE Connectivity	
DIMENSIONS:	TOLERANCES UNLESS OTHERWISE SPECIFIED:	PRODUCT SPEC	NAME: 8P 025 CAP ASSEMBLY H-TYPE	
mm	0 PLC ±0.3 1 PLC ±0.3 2 PLC ±0.3 3 PLC ±0.3 4 PLC ±0.3 ANGLES ±0.3°	APPLICATION SPEC	SMT J-PEG REVERSE LOCK TYPE	
MATERIAL:	FINISH:	WEIGHT:	SIZE: A100779	SCALE: NTS
CUSTOMER DRAWING		CAGE CODE: 2237149	SHEET 3 OF 3 REV A	