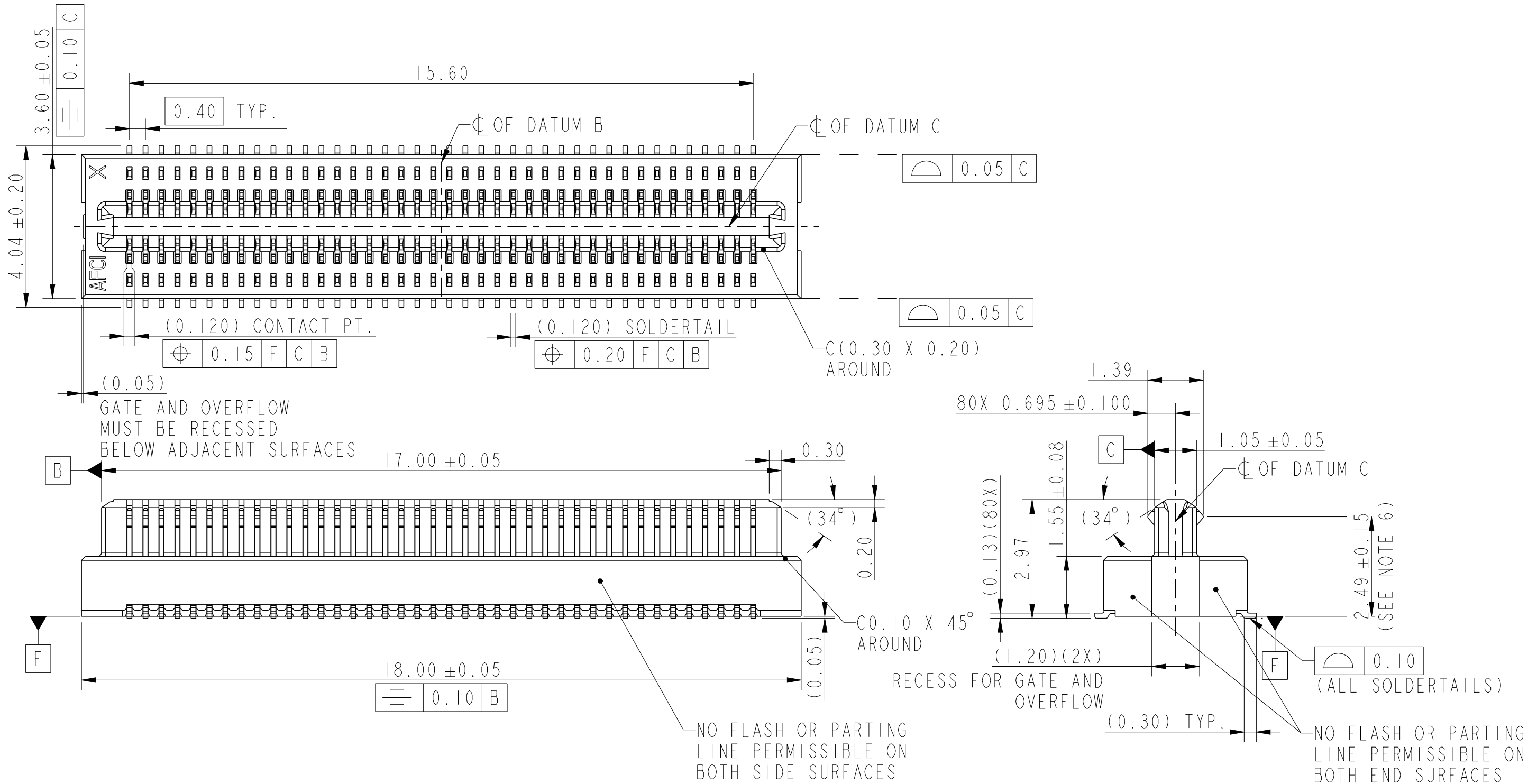


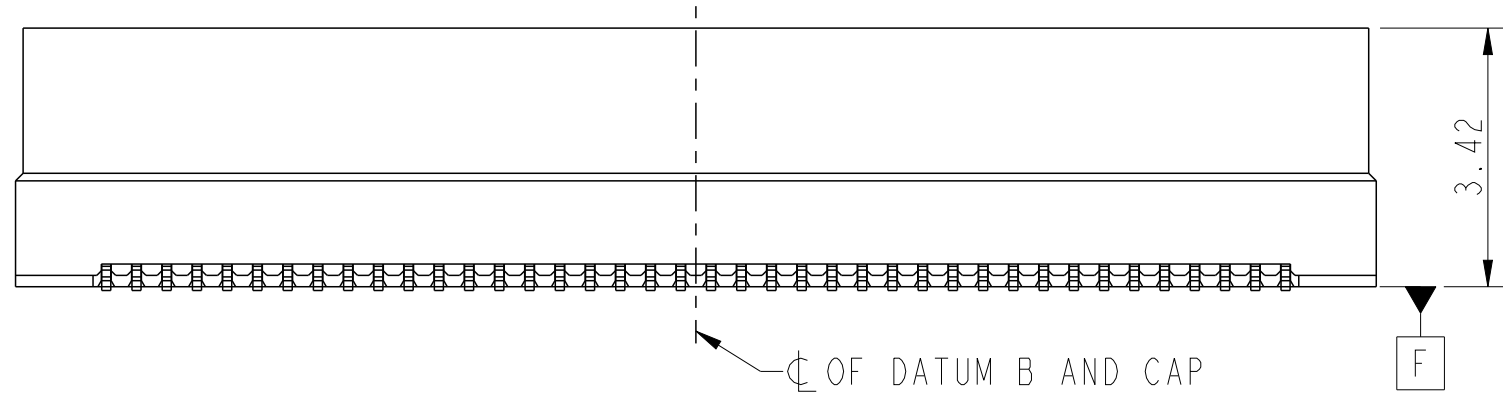
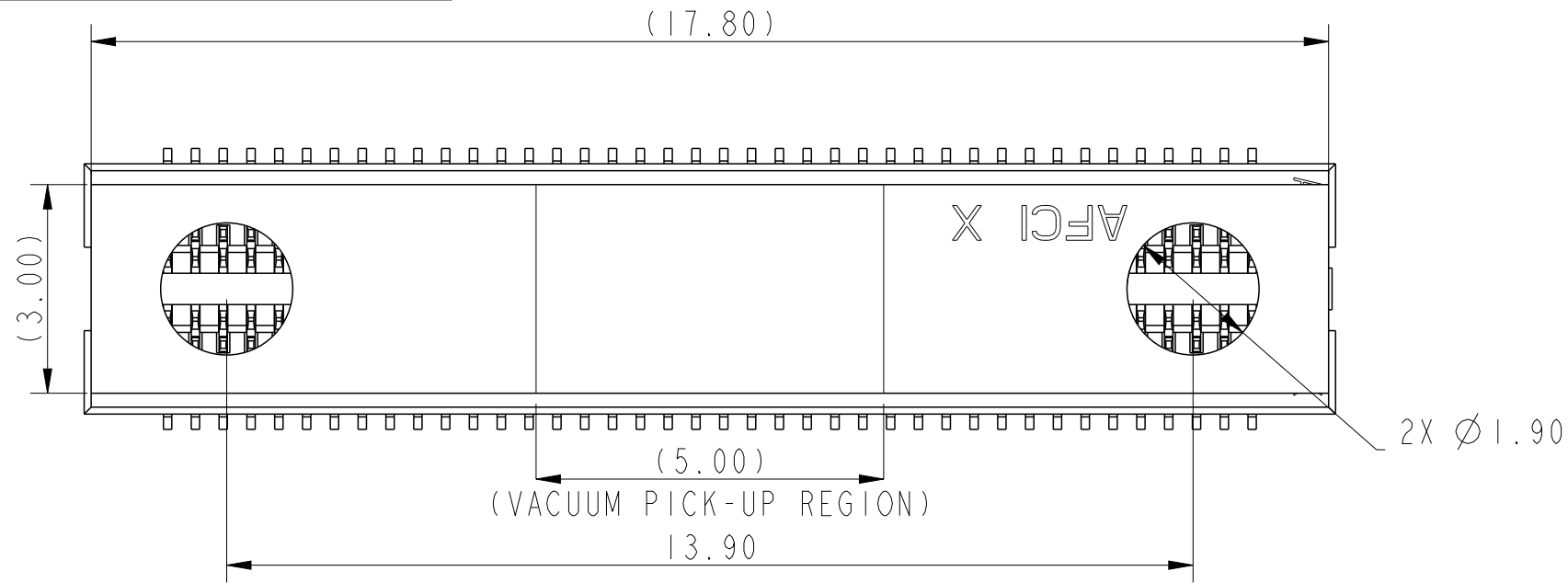


PRODUCT NO.	REMARK
10161488-001C-TRLF	80 POSITION



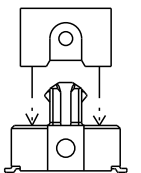
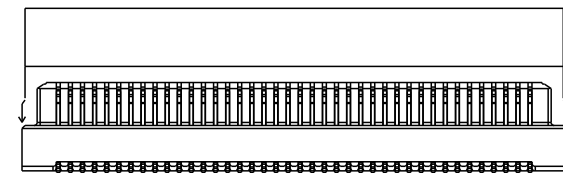
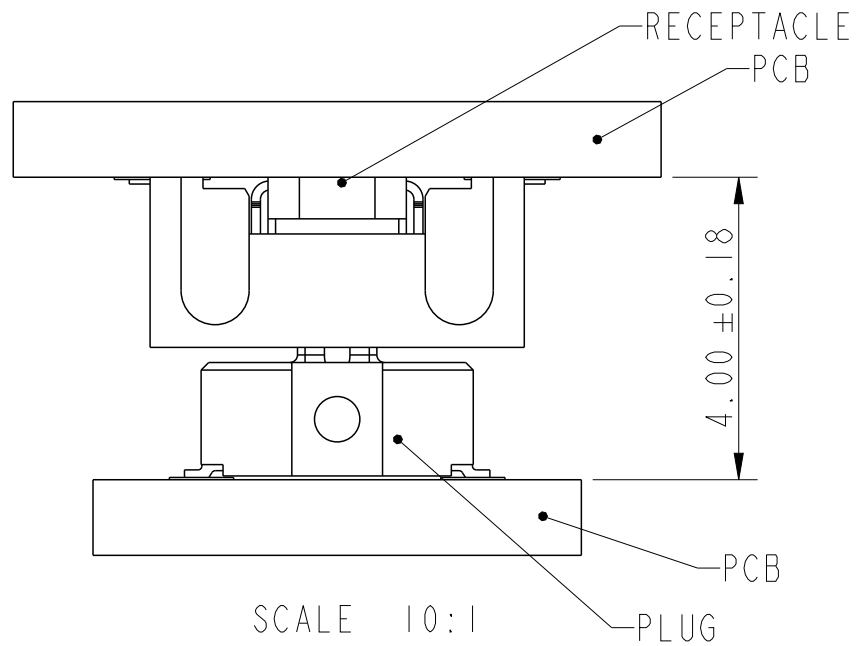
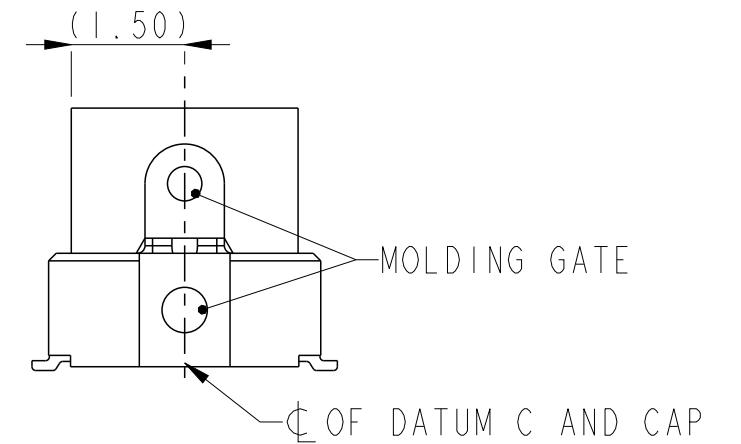
spec ref		ASME Y14.5		dr		Jeffrey Lim	2021/02/23		<div>projection</div> <div></div>	<div>MM</div> <div></div>	size	A3	scale	10:1	
tolerance std	TOLERANCES UNLESS OTHERWISE SPECIFIED			eng		Jeffrey Lim	2021/02/25				ecn no		-		
				chr		-		-			-				
					appr		Koon-Poh Tay	2021/02/25		product family		-	rel level		Released
surface	<div>✓</div>	linear	0.X	± -	Amphenol FCi	title	0.4PITCH 80P BTB PLUG				dwg no	10161488		rev	A
			0.XX	±0.15											
			0.XXX	± -											
	angular	0°	±3°	amphenol-icc.com	cat. no.	-	Product - Customer Drw					sheet 1 of 3			

PRODUCT NO.	PACKAGING
10161488-001C-TRLF	TAPE & REEL

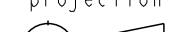



SCALE 10:1

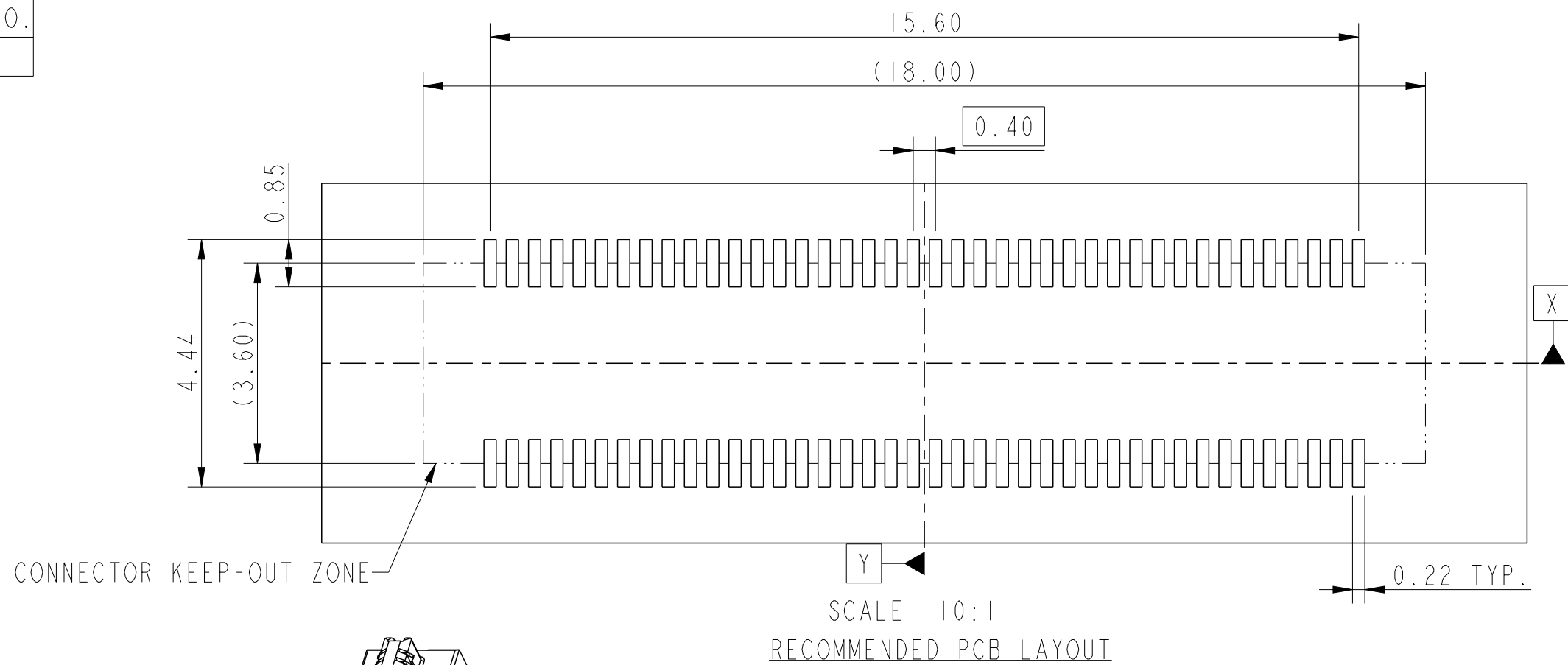
WITH CAP ATTACHED



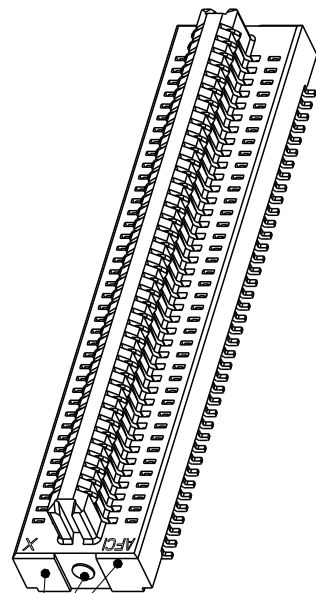
CAPPING DIRECTION

spec ref		ASME Y14.5			dr	Jeffrey Lim	2021/02/23			size	A3	scale	3:1
tolerance std	TOLERANCES UNLESS OTHERWISE SPECIFIED			eng	Jeffrey Lim	2021/02/25	ecn no			-			
				chr	-	-							
				appr	Koon-Poh Tay	2021/02/25					product family		-
surface	✓	linear	0.X	± -	Amphenol FCi	title	0.4PITCH 80P BTB		dwg no	10161488		rev	A
			0.XX	±0.15									
			0.XXX	± -									
			angular	0°	±3°	amphenol-icc.com	cat. no.	-	Product - Customer Drw			sheet 2 of 3	

PRODUCT NO.
SEE TABLE



SCALE 10:1
RECOMMENDED PCB LAYOUT



GATE AND OVERFLOW MUST BE
RECESSED BELOW ADJACENT
SURFACES SCALE 5:1

NOTES:

- MATERIAL:
A) HOUSING & CAP: HIGH TEMPERATURE THERMOPLASTIC, COLOR: NATURAL
B) TERMINAL: COPPER ALLOY
- FINISH:
TERMINAL: 0.2um MIN. Au PLATING(CONTACT AREA),
0.05um MIN. Au PLATING(SOLDERTAIL AREA) OVER
1.27um MIN. Ni UNDERPLATE OVERALL
- WITH RECEPTACLE P/N. 10161487, THE MATED PAIR SHALL ALLOW
X/Y +/-0.20MM DISPLACEMENT OFFSET
- PRODUCT SPEC.: GS-12-1489
- PACKAGING SPEC.: GS-14-2631(TAPE & REEL)
- DIMENSION TO BE MEASURED AT FOUR CORNER END CONTACTS
- APPLICATION SPEC.: GS-20-0662
- THIS PRODUCT MEETS EUROPEAN UNION DIRECTIVES AND OTHER COUNTRY
REGULATIONS AS DESCRIBED IN GS-47-0004
- THE HOUSING WILL WITHSTAND EXPOSURE TO 260°C PEAK TEMPERATURE FOR
10 SECONDS IN A CONVECTION, INFRA-RED OR VAPOR PHASE REFLOW OVEN
- A SYMBOL WILL BE NEXT TO ANY DIMENSION, VIEW OR NOTE WHICH
HAS BEEN MODIFIED WITH THE CURRENT DRAWING REVISION

spec ref		ASME Y14.5			dr		Jeffrey Lim		2021/02/23		<div>projection</div> <div></div>		<div>MM</div> <div></div>		size		A3		scale		10:1								
tolerance std		TOLERANCES UNLESS OTHERWISE SPECIFIED			eng		Jeffrey Lim		2021/02/25						ecn no				-										
					chr		-		-						rel level				Released										
					appr		Koon-Poh Tay		2021/02/25		product family				-														
surface		✓	linear	0.X		± -		Amphenol FCI				title				0.4PITCH 80P BTB				dwg no		10161488				rev		A	
				0.XX		±0.15																							
				0.XXX		± -																							
					angular	0°		±3°		amphenol-icc.com				cat. no.				-		Product - Customer Drw				sheet 3 of 3					