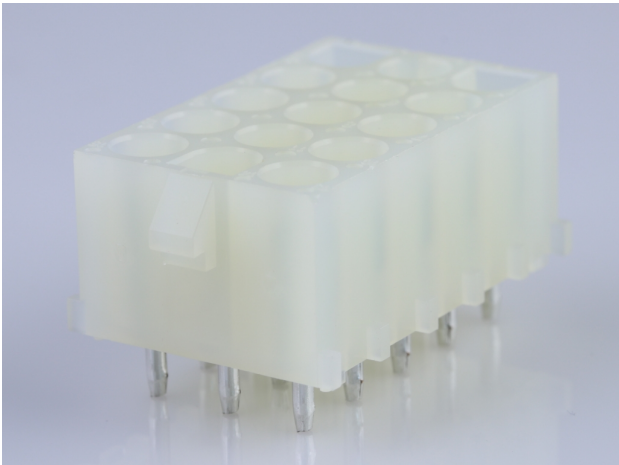




Part Number : [10844152](#)
Product Description : 6.35mm Pitch MLX
Power Connector, 2.13mm Contact Diameter,
Vertical, PA Polyamide (Nylon) 6/6, Tin (Sn),
White, 15 Circuits
Series Number : 42002
Status : Active
Product Category : PCB Headers and
Receptacles
Engineering Number : A-42002-15A2A1



Documents & Resources

Drawings

- [010844152_sd.pdf](#)
- [PK-43255-001-001.pdf](#)
- [PK-43255-003-001.pdf](#)

3D Models and Design Files


- [010844152_stp.zip](#)

Specifications

- [PSX-42002-0001-001.pdf](#)

Product Environment Compliance

Compliance

GADSL/IMDS	Compliant with Exemption 44
China RoHS	
EU ELV	Not Relevant
Low-Halogen Status	Low-Halogen per IEC 61249-2-21
REACH SVHC	Not Contained per D(2024)6225-DC (07 Nov 2024)
EU RoHS	Compliant per EU 2015/863

Multiple Part Product Compliance Statements

- Eu RoHS
- REACH SVHC

- Low-Halogen

Multiple Part Industry Compliance Documents

- IPC 1752A Class C

- IPC 1752A Class D

- Molex Product Compliance Declaration

- IEC-62474

- chemSHERPA (xml)

EU RoHS Certificate of Compliance

Part Details

General

Status	Active
Category	PCB Headers and Receptacles
Series	42002
Description	6.35mm Pitch MLX Power Connector, 2.13mm Contact Diameter, Vertical, PA Polyamide (Nylon) 6/6, Tin (Sn), White, 15 Circuits
Application	Power, Wire-to-Board
Comments	High Vibration Application
Component Type	PCB Header
Product Name	MLX
UPC	800753610613

Agency

CSA	LR19980
UL	E29179

Electrical

Current - Maximum per Contact	13.5A, 20.0A
Voltage - Maximum	600V

Physical

Breakaway	No
Circuits (Loaded)	15
Circuits (maximum)	15

Color - Resin	Natural
Durability (mating cycles max)	50
Flammability	94V-2
Glow-Wire Capable	No
Lock to Mating Part	Yes
Material - Metal	Phosphor Bronze
Material - Plating Mating	Tin
Material - Plating Termination	Tin
Material - Resin	Nylon
Net Weight	8.071/g
Number of Rows	3
Orientation	Vertical
Packaging Type	Carton
PC Tail Length	4.30mm
PCB Retention	None
PCB Thickness - Recommended	0.90mm
Pitch - Mating Interface	6.35mm
Polarized to PCB	Yes
Temperature Range - Operating	-55° to +105°C
Termination Interface Style	Through Hole

Solder Process Data

Max-Duration	10
Lead-Free Process Capability	WAVE
Max-Temp	260

Mates With / Use With

Mates with Part(s)

Description	Part Number
2.13mm Diameter MLX Power Crimp Housing Plugs	<u>42021</u>
MLX Male Crimp Terminals	<u>42023</u>
