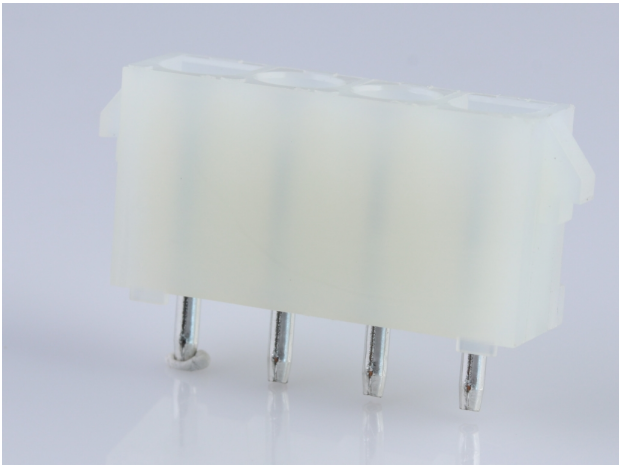




Part Number : [10845040](#)
Product Description : 6.35mm Pitch MLX
Power Connector Header, Vertical, 4 Circuits,
Polyester 94V-0, Tin (Sn) Plating, White
Series Number : 42002
Status : Active
Product Category : PCB Headers and
Receptacles
Engineering Number : 42002-4C1A1



Documents & Resources


Drawings
[010845040_sd.pdf](#)
[PK-43255-001-001.pdf](#)
[PK-43255-003-001.pdf](#)

3D Models and Design Files
[010845040_stp.zip](#)

Specifications
[PSX-42002-0001-001.pdf](#)

Product Environment Compliance

Compliance

GADSL/IMDS	Compliant with Exemption 44
China RoHS	
EU ELV	Not Relevant
Low-Halogen Status	Not Low-Halogen per IEC 61249-2-21
REACH SVHC	Not Contained per D(2024)6225-DC (07 Nov 2024)
EU RoHS	Compliant per EU 2015/863

Multiple Part Product Compliance Statements
- Eu RoHS
- REACH SVHC

- Low-Halogen

Multiple Part Industry Compliance Documents

- IPC 1752A Class C
- IPC 1752A Class D
- Molex Product Compliance Declaration
- IEC-62474
- chemSHERPA (xml)

EU RoHS Certificate of Compliance

Part Details

General

Status	Active
Category	PCB Headers and Receptacles
Series	42002
Description	6.35mm Pitch MLX Power Connector Header, Vertical, 4 Circuits, Polyester 94V-0, Tin (Sn) Plating, White
Application	Power, Wire-to-Board
Comments	Solder Type
Component Type	PCB Header
Product Name	MLX
UPC	800754227865

Agency

CSA	LR19980
UL	E29179

Electrical

Current - Maximum per Contact	13.5A, 20.0A
Voltage - Maximum	600V

Physical

Breakaway	No
Circuits (Loaded)	4
Circuits (maximum)	4

Color - Resin	Natural
Durability (mating cycles max)	50
First Mate / Last Break	No
Flammability	94V-0
Glow-Wire Capable	No
Guide to Mating Part	Yes
Keying to Mating Part	Yes
Lock to Mating Part	Yes
Material - Metal	Phosphor Bronze
Material - Plating Mating	Tin
Material - Resin	Polyester
Net Weight	2.838/g
Number of Rows	1
Orientation	Vertical
Packaging Type	Bag
PC Tail Length	4.27mm
PCB Retention	Yes
PCB Thickness - Recommended	1.60mm
Pitch - Mating Interface	6.35mm
Pitch - Termination Interface	6.35mm
Polarized to Mating Part	Yes
Polarized to PCB	Yes
Shrouded	Fully
Stackable	No
Temperature Range - Operating	-55° to +105°C
Termination Interface Style	Through Hole

Solder Process Data

Max-Duration	10
Lead-Free Process Capability	WAVE
Max-Temp	260

Mates With / Use With

Mates with Part(s)

Description	Part Number
2.13mm Diameter MLX Power Crimp Housing Plugs	<u>42021</u>

This document was generated on Jan 17, 2025