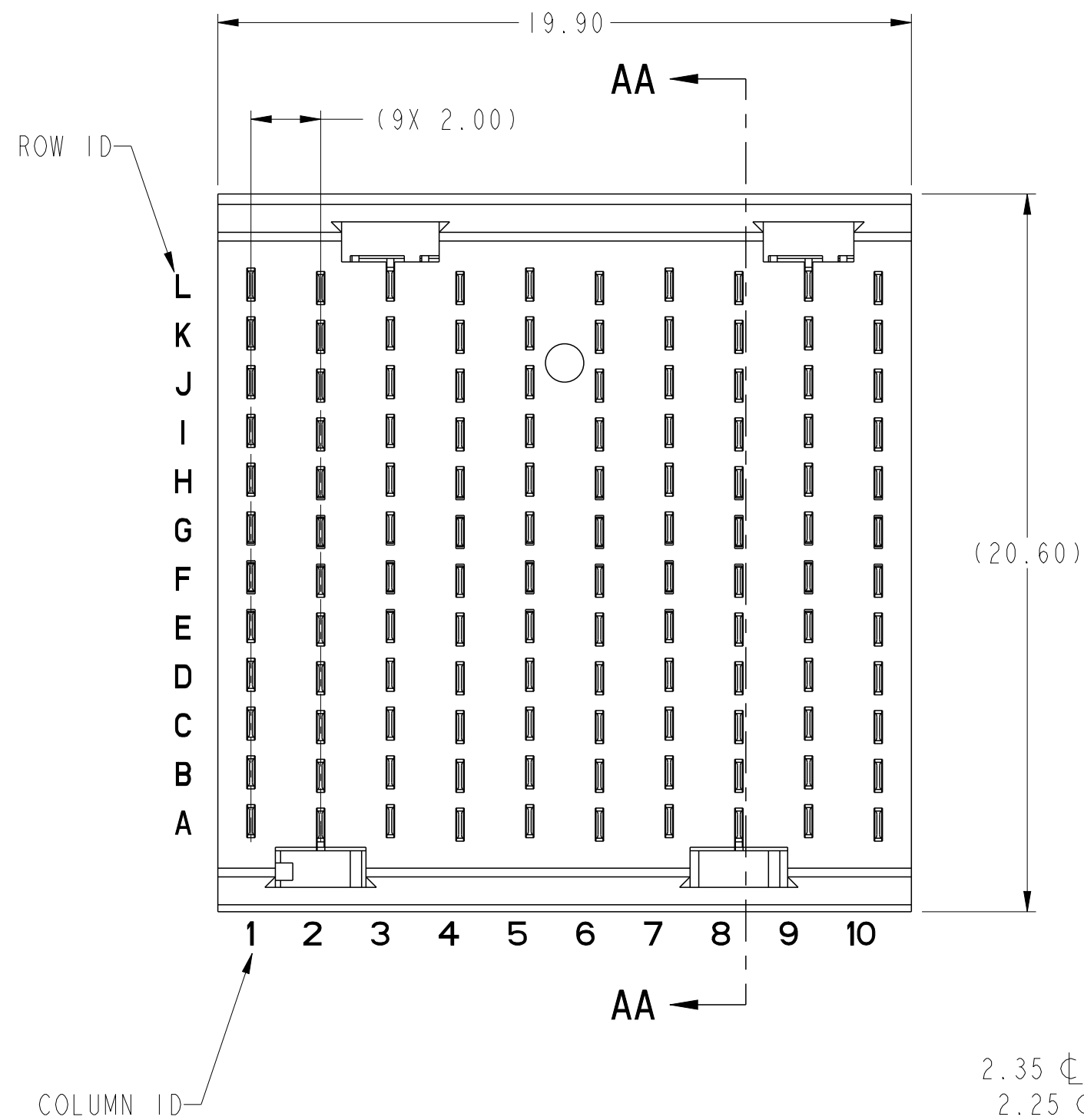
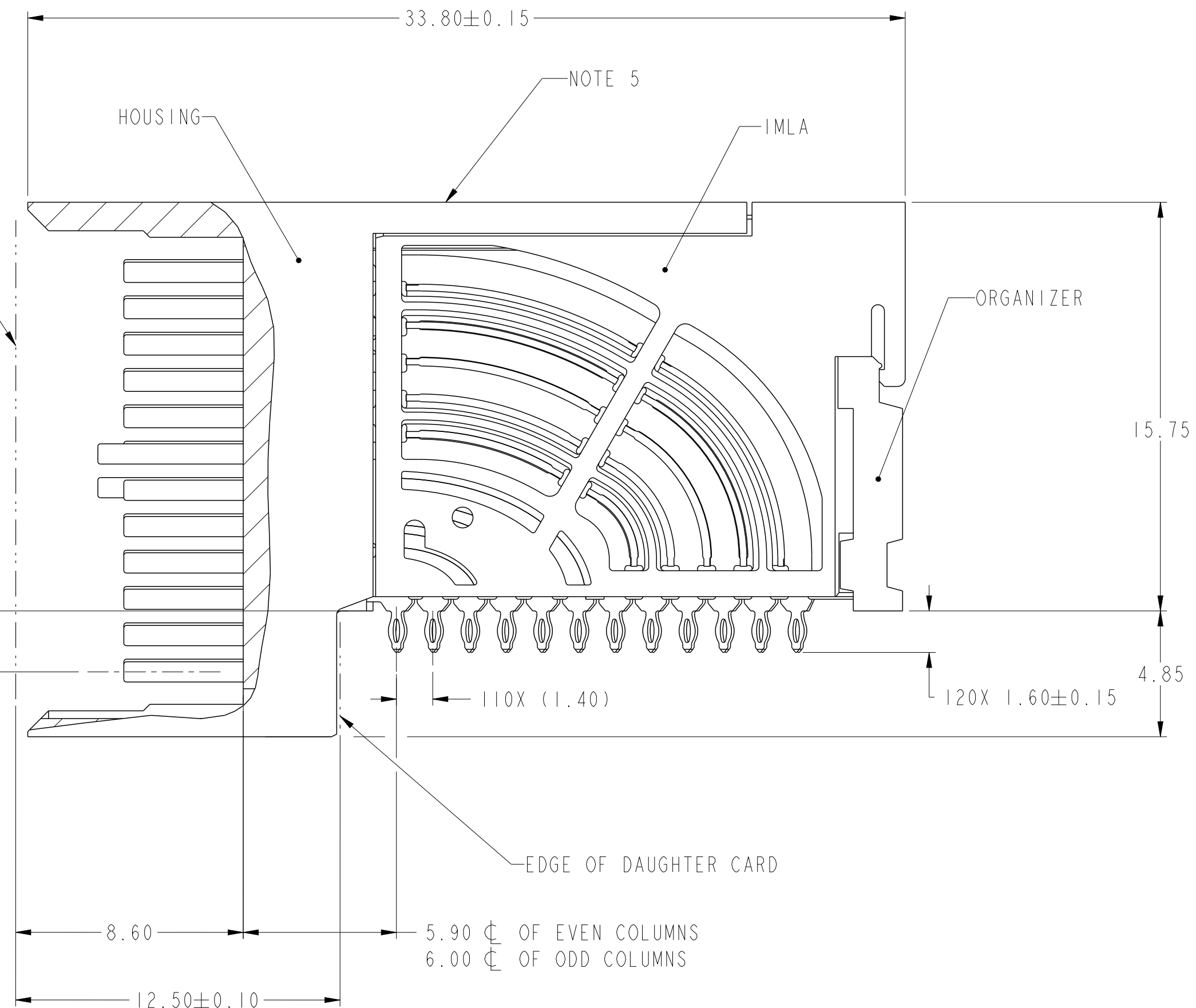


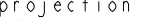

PRODUCT NUMBER
SEE SHEET 3

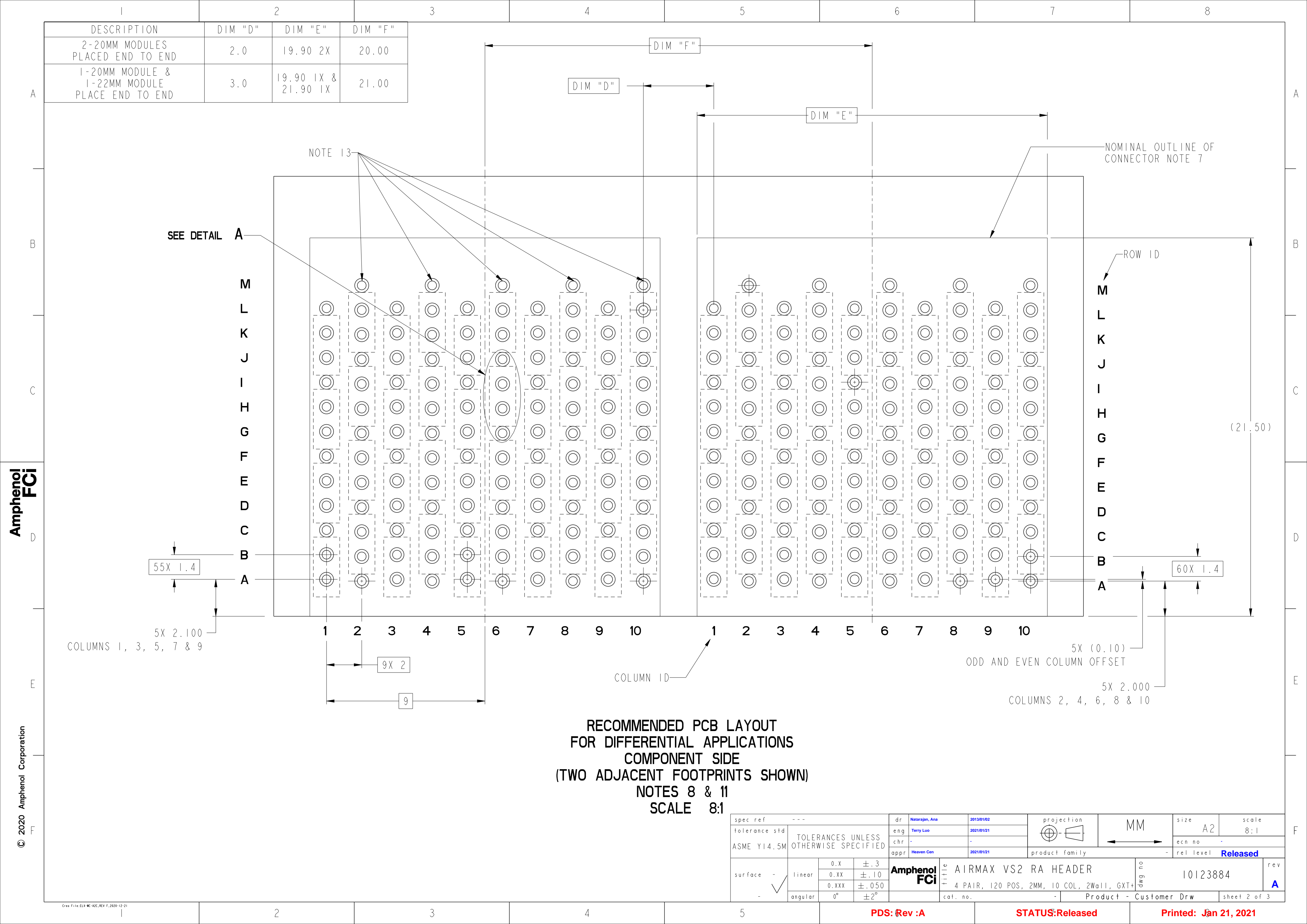


2.35 ϕ OF EVEN COLUMNS
2.25 ϕ OF ODD COLUMNS



SECTION AA-AA

spec ref		---		dr		Natarajan, Ana		2013/01/02		projection		MM		size		A2		scale		10:1	
tolerance std		TOLERANCES UNLESS OTHERWISE SPECIFIED		eng		Terry Luo		2021/01/21						ecn no		-					
ASME Y14.5M				chr		-		-													
				appr		Heaven Cen		2021/01/21		product family		-		rel level		Released					
surface		linear		0.X		±.3		Amphenol FCI		title		AIRMAX VS2 RA HEADER		dwg no		10123884		rev		A	
				0.XXX		±.050															
		angular		0°		±2°															



Amphenol FCI

© 2020 Amphenol Corporation

spec ref	---	dr	Natarajan, Ana	2013/01/02	projection	MM	size	A2	scale	8:1
tolerance std	ASME Y14.5M	eng	Terry Luo	2021/01/21	chr	-	ecn no	-		
		appr	Heaven Cen	2021/01/21	product family	-	rel level	Released		
surface	-	linear	0.X	±.3	Amphenol FCI	title	AIRMAX VS2 RA HEADER	dwg no	10123884	rev
			0.XX	±.10			4 PAIR, 120 POS, 2MM, 10 COL, 2Wall, GXT+			A
			0.XXX	±.050						
		angular	0°	±2°						
					cat. no.	-	Product - Customer Drw	sheet 2 of 3		

PRODUCT NUMBER

10123884-101

PRESS-FIT TAIL PLATING TYPE

TIN/LEAD ALLOY OVER NICKEL

REMARK

1-SIDE PLATING CUSTOMER SPECIAL

10123884-101LF

TIN OVER NICKEL (LEAD FREE)

1-SIDE PLATING CUSTOMER SPECIAL

10123884-102

TIN/LEAD ALLOY OVER NICKEL

2-SIDES PLATING

10123884-102LF

TIN OVER NICKEL (LEAD FREE)

2-SIDES PLATING

1

- CONNECTOR MATERIALS:
HOUSING: HIGH TEMP THERMOPLASTIC, NATURAL, UL94-V0
IMLA PLASTIC: HIGH TEMP THERMOPLASTIC, BLACK, UL94-V0
CONTACT: COPPER ALLOY
ORGANIZER: HIGH TEMP THERMOPLASTIC, NATURAL, UL94-V0

2

- CONTACT PLATING:
SEPARABLE INTERFACE:
PERFORMANCE-BASED PLATING, QUALIFIED TO MEET THE REQUIREMENTS OF FCI PRODUCT SPECIFICATION GS-12-0956 INCLUDING TELCORDIA GR-1217-CORE (NOVEMBER 1995) CENTRAL OFFICE TEST SEQUENCE

PRESS-FIT TAILS: SEE TABLE

3

- PRODUCT SPECIFICATION: GS-12-0956

4

- APPLICATION SPECIFICATION: GS-20-0305

5

- PRODUCT MARKING, (PART NUMBER & LOT CODE), ON THIS SURFACE.

6

- POSITIONS "F" OF ODD NUMBERED COLUMNS AND POSITIONS "G" OF EVEN NUMBERED COLUMNS CORRESPOND TO EARLY MATE HEADER PINS.

7

- CONNECTOR OUTLINE MAY BE SCREEN PRINTED ONTO CUSTOMER PCB TO BE USED AS A GUIDE FOR CONNECTOR PLACEMENT.

8

- REFER TO CUSTOMER DRAWING 10104444 FOR INFORMATION ON PCB HOLE DIAMETERS AND PLATING OPTIONS

9

- LEAD FREE PRODUCT MEETS THE EUROPEAN UNION DIRECTIVES & OTHER COUNTRY REGULATIONS AS DESCRIBED IN GS-22-008

10

- PACKAGING MEETS GS-14-920 LEAD FREE LABELING SPECIFICATION.

11

- GROUND CONTACTS (C, F, I & L IN ODD COLUMNS AND A, D, G & J IN EVEN COLUMNS) REQUIRE (Ø0.50) FINISHED HOLES. SIGNAL LOCATIONS REQUIRE (Ø0.50) FINISHED HOLES

12

- THESE OUTER VIAS (M) ARE OPTIONAL. WHILE NO CONNECTOR EONS ARE PRESSED INTO THESE HOLES WE RECCOMMEND (Ø0.500) FINISHED HOLES AT THESE LOCATIONS TO PROVIDE GROUND SYMMETRY THROUGH THE PCB.

45X Ø0.500

⊕

Ø0.1

GROUND AND M VIA

NOTES 8 , 11, AND 12

125X (Ø0.80)

1.50

80X Ø0.500

⊕

Ø0.1

SIGNAL

NOTES 8 & 11

3.40

DETAIL A

SCALE 15:1

10123884-101 OR -101LF

10123884-102 OR -102LF

SCALE 4:1

PLATING ONE SIDE

10123884-101 OR -101LF

10123884-102 OR -102LF

spec ref	---	dr	Natarajan, Ana	2013/01/02	projection	MM	size	A2	scale	10:1
tolerance std	ASME Y14.5M	eng	Terry Luo	2021/01/21	chr	-	ecn no	-		
		appr	Heaven Cen	2021/01/21	product family	-	rel level	Released		
surface	-	linear	0.X	±.3	Amphenol FCI	AIRMAX VS2 RA HEADER	dwg no	10123884	rev	A
			0.XX	±.10		4 PAIR, 120 POS, 2MM, 10 COL, 2Wall, GXT+				
			0.XXX	±.050						
		angular	0°	±2°						
					cat. no.	-	Product - Customer Drw	sheet 3 of 3		

PDS: Rev :A

STATUS:Released

Printed: Jan 21, 2021

Crea File:ELX-MC-A2C_REV F_2020-12-21