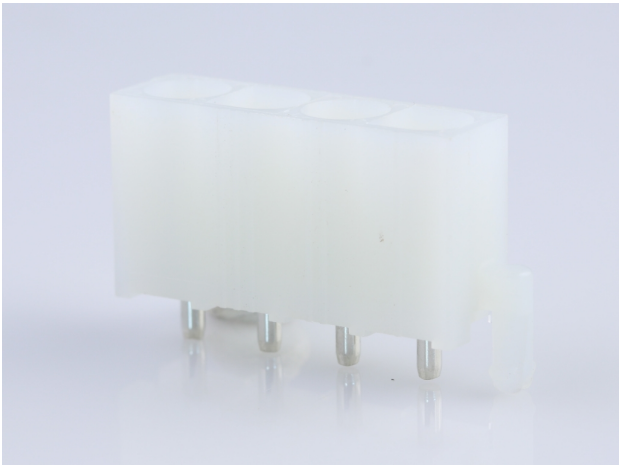




Part Number : [15311046](#)
Product Description : 2.36mm Diameter
Standard .093" Pin and Socket Header,
Vertical, with Beveled Plastic Peg, 4 Circuits
Series Number : 5219
Status : Active
Product Category : PCB Headers and
Receptacles
Engineering Number : 5219-04A



Documents & Resources

Drawings

[015311046_sd.pdf](#)
[PK-5219-002-001.pdf](#)

3D Models and Design Files


[015311046_stp.zip](#)

Specifications

[TS-5219-002-001.pdf](#)

Product Environment Compliance

Compliance

GADSL/IMDS	Compliant with Exemption 44; 33
China RoHS	
EU ELV	Not Relevant
Low-Halogen Status	Low-Halogen per IEC 61249-2-21
REACH SVHC	Not Contained per D(2024)6225-DC (07 Nov 2024)
EU RoHS	Compliant per EU 2015/863

Multiple Part Product Compliance Statements

- Eu RoHS
- REACH SVHC
- Low-Halogen

Multiple Part Industry Compliance Documents

- IPC 1752A Class C
- IPC 1752A Class D
- Molex Product Compliance Declaration
- IEC-62474
- chemSHERPA (xml)

EU RoHS Certificate of Compliance

Part Details

General

Status	Active
Category	PCB Headers and Receptacles
Series	5219
Description	2.36mm Diameter Standard .093" Pin and Socket Header, Vertical, with Beveled Plastic Peg, 4 Circuits
Application	Power, Wire-to-Board
Component Type	PCB Header
Product Name	Standard .093"
UPC	800753622128

Agency

CSA	LR19980
-----	---------

Electrical

Current - Maximum per Contact	9.0A
Voltage - Maximum	600V

Physical

Breakaway	No
Circuits (Loaded)	4
Circuits (maximum)	4
Durability (mating cycles max)	30
First Mate / Last Break	No
Flammability	94V-2
Glow-Wire Capable	No

Guide to Mating Part	No
Keying to Mating Part	None
Lock to Mating Part	Yes
Material - Plating Mating	Tin
Material - Plating Termination	Tin
Net Weight	3551.004/mg
Number of Rows	1
Orientation	Vertical
Packaging Type	Bag
PCB Locator	Yes
PCB Retention	Yes
PCB Thickness - Recommended	1.60mm
Pitch - Mating Interface	6.70mm
Polarized to Mating Part	Yes
Polarized to PCB	Yes
Shrouded	Fully
Stackable	No
Temperature Range - Operating	-40° to +105°C
Termination Interface Style	Through Hole

Mates With / Use With

Mates with Part(s)

Description	Part Number
Standard .093" Pin and Socket Connector Housings	<u>3191</u>