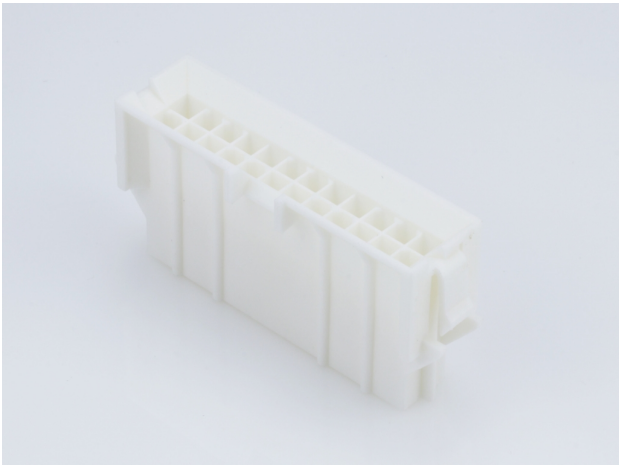




Part Number : [15060246](#)
Product Description : Mini-Fit BMI Plug Housing, 4.20mm Pitch Dual Row with Panel Mount Ears, White, UL 94V-0, 24 Circuits
Series Number : 42475
Status : Active
Product Category : Connector Housings
Engineering Number : 42475-2421



Documents & Resources

Drawings

[015060246_sd.pdf](#)

3D Models and Design Files


[015060246_stp.zip](#)

Specifications

- [PK-42474-001-001.pdf](#)
- [PS-45750-001-001.pdf](#)
- [55560002-PS-CH-000.pdf](#)
- [55560002-PS-ES-000.pdf](#)
- [55560002-PS-SK-000.pdf](#)
- [PS-5556-002-001.pdf](#)
- [TS-42475-001-001.pdf](#)
- [TS-5556-002-001.pdf](#)

Product Environment Compliance

Compliance

| | |
|--------------------|---|
| GADSL/IMDS | Not Relevant |
| China RoHS |  |
| EU ELV | Not Relevant |
| Low-Halogen Status | Low-Halogen per IEC 61249-2-21 |
| REACH SVHC | Not Contained per D(2024)6225-DC (07 Nov 2024) |
| EU RoHS | Compliant per EU 2015/863 |

Multiple Part Product Compliance Statements

- Eu RoHS
- REACH SVHC
- Low-Halogen

Multiple Part Industry Compliance Documents

- IPC 1752A Class C
- IPC 1752A Class D
- Molex Product Compliance Declaration
- IEC-62474
- chemSHERPA (xml)

EU RoHS Certificate of Compliance

Part Details

General

| | |
|--------------|--|
| Status | Active |
| Category | Connector Housings |
| Series | 42475 |
| Description | Mini-Fit BMI Plug Housing, 4.20mm Pitch Dual Row with Panel Mount Ears, White, UL 94V-0, 24 Circuits |
| Application | Power, Wire-to-Board, Wire-to-Wire |
| Comments | Current = 13A max. per circuit when header is mated to a receptacle loaded with 45750 series terminals crimped to 16 AWG wire. See Molex product specification PS-45750-001 for additional current derating information. |
| Product Name | Mini-Fit BMI |
| UPC | 800754419987 |

Agency

| | |
|-----|---------|
| CSA | LR19980 |
| UL | E29179 |

Physical

| | |
|--------------------|---------|
| Circuits (maximum) | 24 |
| Color - Resin | Natural |
| Flammability | 94V-0 |

| | |
|-------------------------------|----------------|
| Gender | Plug |
| Glow-Wire Capable | No |
| Material - Resin | Nylon |
| Net Weight | 8.520/g |
| Number of Rows | 2 |
| Packaging Type | Bag |
| Panel Mount | Yes |
| Pitch - Mating Interface | 4.20mm |
| Pitch - Termination Interface | 4.20mm |
| Stackable | No |
| Temperature Range - Operating | -40° to +105°C |

Solder Process Data

| | |
|------------------------------|-----|
| Lead-Free Process Capability | N/A |
|------------------------------|-----|

Mates With / Use With

Mates with Part(s)

| Description | Part Number |
|---|--------------|
| Mini-Fit BMI Vertical Dual Row Receptacle Headers | <u>42385</u> |
| Mini-Fit BMI Dual Row Receptacle Housings | <u>42474</u> |
| Mini-Fit HCS Vertical Dual Row PCB Receptacles | <u>44475</u> |
| Mini-Fit BMI Dual Row Receptacle Housings | <u>44516</u> |

Use with Part(s)

| Description | Part Number |
|---|------------------|
| Pre-Crimped Lead Mini-Fit Male-to-Mini-Fit Male, Tin (Sn) Plating, 150.00mm Length, 18 AWG, Red | <u>797580005</u> |
| Pre-Crimped Lead Mini-Fit Male-to-Mini-Fit Male, Tin (Sn) Plating, 300.00mm Length, 18 AWG, Red | <u>797580013</u> |
| Mini-Fit Male Crimp Terminals | <u>5558</u> |
| Mini-Fit Plus Male Crimp Terminals | <u>46012</u> |

This document was generated on Jan 20, 2025