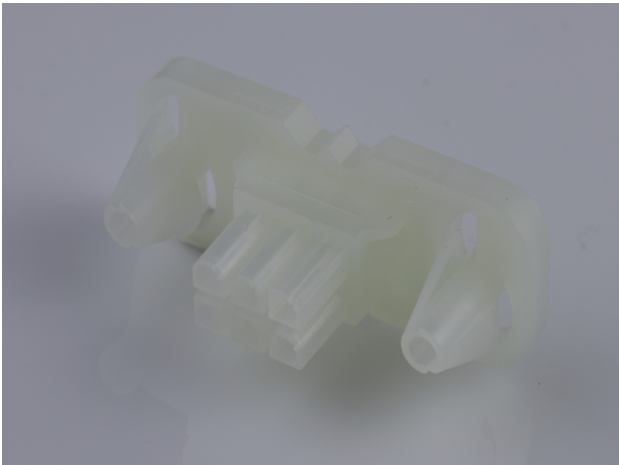




Part Number : [15060060](#)
Product Description : Mini-Fit BMI Receptacle Housing, 4.20mm Pitch, Dual Row with Panel Mount Ears, PA Polyamide Nylon 6/6, UL 94V-2, 6 Circuits
Series Number : 42474
Status : Active
Product Category : Connector Housings
Engineering Number : 42474-0611



Documents & Resources


Drawings
[015060060_sd.pdf](#)

3D Models and Design Files
[015060060_stp.zip](#)

Specifications
[PK-42474-001-001.pdf](#)
[PS-45750-001-001.pdf](#)
[55560002-PS-CH-000.pdf](#)
[55560002-PS-ES-000.pdf](#)
[55560002-PS-SK-000.pdf](#)
[PS-5556-002-001.pdf](#)
[TS-5556-002-001.pdf](#)

Product Environment Compliance

Compliance

| | |
|--------------------|---------------------------------------------------------------------------------------|
| GADSL/IMDS | Not Relevant |
| China RoHS |  |
| EU ELV | Not Relevant |
| Low-Halogen Status | Low-Halogen per IEC 61249-2-21 |
| REACH SVHC | Not Contained per D(2024)6225-DC (07 Nov 2024) |
| EU RoHS | Compliant per EU 2015/863 |

Multiple Part Product Compliance Statements

- Eu RoHS
- REACH SVHC
- Low-Halogen

Multiple Part Industry Compliance Documents

- IPC 1752A Class C
- IPC 1752A Class D
- Molex Product Compliance Declaration
- IEC-62474
- chemSHERPA (xml)

EU RoHS Certificate of Compliance

Part Details

General

| | |
|--------------|--------------------------------------------------------------------------------------------------------------------------------------------------------------------------------------------------------------------------|
| Status | Active |
| Category | Connector Housings |
| Series | 42474 |
| Description | Mini-Fit BMI Receptacle Housing, 4.20mm Pitch, Dual Row with Panel Mount Ears, PA Polyamide Nylon 6/6, UL 94V-2, 6 Circuits |
| Application | Power, Wire-to-Board, Wire-to-Wire |
| Comments | Current = 13A max. per circuit when header is mated to a receptacle loaded with 45750 series terminals crimped to 16 AWG wire. See Molex product specification PS-45750-001 for additional current derating information. |
| Product Name | Mini-Fit BMI |
| UPC | 800753689022 |

Agency

| | |
|-----|---------|
| CSA | LR19980 |
| UL | E29179 |

Physical

| | |
|--------------------|----|
| Breakaway | No |
| Circuits (maximum) | 6 |

| | |
|-------------------------------|----------------|
| Color - Resin | Natural |
| Flammability | 94V-2 |
| Gender | Receptacle |
| Glow-Wire Capable | No |
| Lock to Mating Part | None |
| Material - Resin | Nylon |
| Net Weight | 3.609/g |
| Number of Rows | 2 |
| Packaging Type | Bag |
| Panel Mount | Yes |
| Pitch - Mating Interface | 4.20mm |
| Pitch - Termination Interface | 4.20mm |
| Polarized to Mating Part | Yes |
| Stackable | No |
| Temperature Range - Operating | -40° to +105°C |

Solder Process Data

| | |
|------------------------------|-----|
| Lead-Free Process Capability | N/A |
|------------------------------|-----|

Mates With / Use With

Mates with Part(s)

| Description | Part Number |
|-------------------------------------------|--------------|
| Mini-Fit BMI Dual Row Plug Housings | <u>42475</u> |
| Mini-Fit BMI Vertical Dual Row Headers | <u>43879</u> |
| Mini-Fit BMI Right-Angle Dual Row Headers | <u>42404</u> |
| Mini-Fit BMI Vertical Dual Row Headers | <u>42440</u> |
| Mini-Fit BMI Right-Angle Dual Row Headers | <u>43810</u> |
| Mini-Fit BMI Vertical Dual Row Headers | <u>44068</u> |

Use with Part(s)

| Description | Part Number |
|-------------|-------------|
|-------------|-------------|

| | |
|-----------------------------------------------------------------------------------------------------|------------------|
| Pre-Crimped Lead Mini-Fit Female-to-Mini-Fit Female, Tin (Sn) Plating, 150.00mm Length, 18 AWG, Red | <u>797580001</u> |
| Pre-Crimped Lead Mini-Fit Female-to-Mini-Fit Female, Tin (Sn) Plating, 300.00mm Length, 18 AWG, Red | <u>797580009</u> |
| Mini-Fit Female Crimp Terminals | <u>5556</u> |
| Mini-Fit Plus Female Crimp Terminals | <u>45750</u> |

This document was generated on Jan 19, 2025