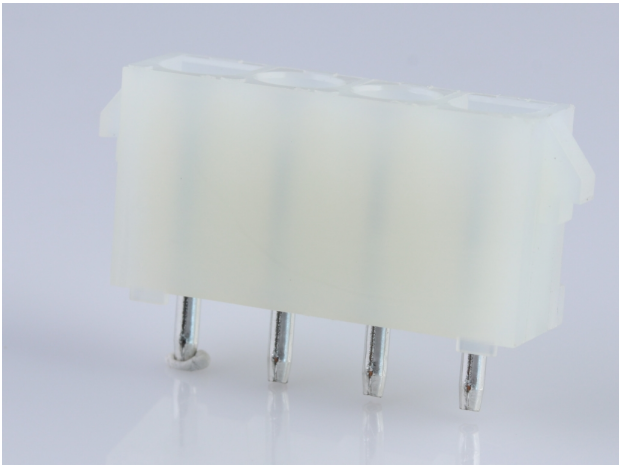




**Part Number :** [10844042](#)  
**Product Description :** 6.35mm Pitch MLX  
Power Connector, 2.13mm Contact Diameter,  
Vertical, PA Polyamide (Nylon) 6/6, Tin (Sn),  
White, 4 Circuits  
**Series Number :** 42002  
**Status :** Active  
**Product Category :** PCB Headers and  
Receptacles  
**Engineering Number :** A-42002-4A2A1



Documents & Resources


**Drawings**  
[010844042\\_sd.pdf](#)  
[PK-43255-001-001.pdf](#)  
[PK-43255-003-001.pdf](#)

**3D Models and Design Files**  
[010844042\\_stp.zip](#)

**Specifications**  
[PSX-42002-0001-001.pdf](#)

Product Environment Compliance

Compliance

GADSL/IMDS	Compliant with Exemption 44
China RoHS	
EU ELV	Not Relevant
Low-Halogen Status	Low-Halogen per IEC 61249-2-21
REACH SVHC	Not Contained per D(2024)6225-DC (07 Nov 2024)
EU RoHS	Compliant per EU 2015/863

Multiple Part Product Compliance Statements  
- Eu RoHS  
- REACH SVHC

- Low-Halogen

## Multiple Part Industry Compliance Documents

- IPC 1752A Class C
- IPC 1752A Class D
- Molex Product Compliance Declaration
- IEC-62474
- chemSHERPA (xml)

## EU RoHS Certificate of Compliance

---

### Part Details

#### General

Status	Active
Category	PCB Headers and Receptacles
Series	42002
Description	6.35mm Pitch MLX Power Connector, 2.13mm Contact Diameter, Vertical, PA Polyamide (Nylon) 6/6, Tin (Sn), White, 4 Circuits
Application	Power, Wire-to-Board
Comments	High Vibration Application
Component Type	PCB Header
Product Name	MLX
UPC	800753610798

#### Agency

CSA	LR19980
UL	E29179

#### Electrical

Current - Maximum per Contact	13.5A, 20.0A
Voltage - Maximum	600V

#### Physical

Breakaway	No
Circuits (Loaded)	4
Circuits (maximum)	4

Color - Resin	Natural
Durability (mating cycles max)	50
Flammability	94V-2
Glow-Wire Capable	No
Lock to Mating Part	Yes
Material - Metal	Phosphor Bronze
Material - Plating Mating	Tin
Material - Plating Termination	Tin
Material - Resin	Nylon
Net Weight	2.564/g
Number of Rows	1
Orientation	Vertical
Packaging Type	Carton
PC Tail Length	4.30mm
PCB Retention	None
PCB Thickness - Recommended	0.90mm
Pitch - Mating Interface	6.35mm
Polarized to PCB	Yes
Temperature Range - Operating	-55° to +105°C
Termination Interface Style	Through Hole

## Solder Process Data

Max-Duration	10
Lead-Free Process Capability	WAVE
Max-Temp	260

---

## Mates With / Use With

### Mates with Part(s)

Description	Part Number
2.13mm Diameter MLX Power Crimp Housing Plugs	<u>42021</u>
MLX Male Crimp Terminals	<u>42023</u>

---

