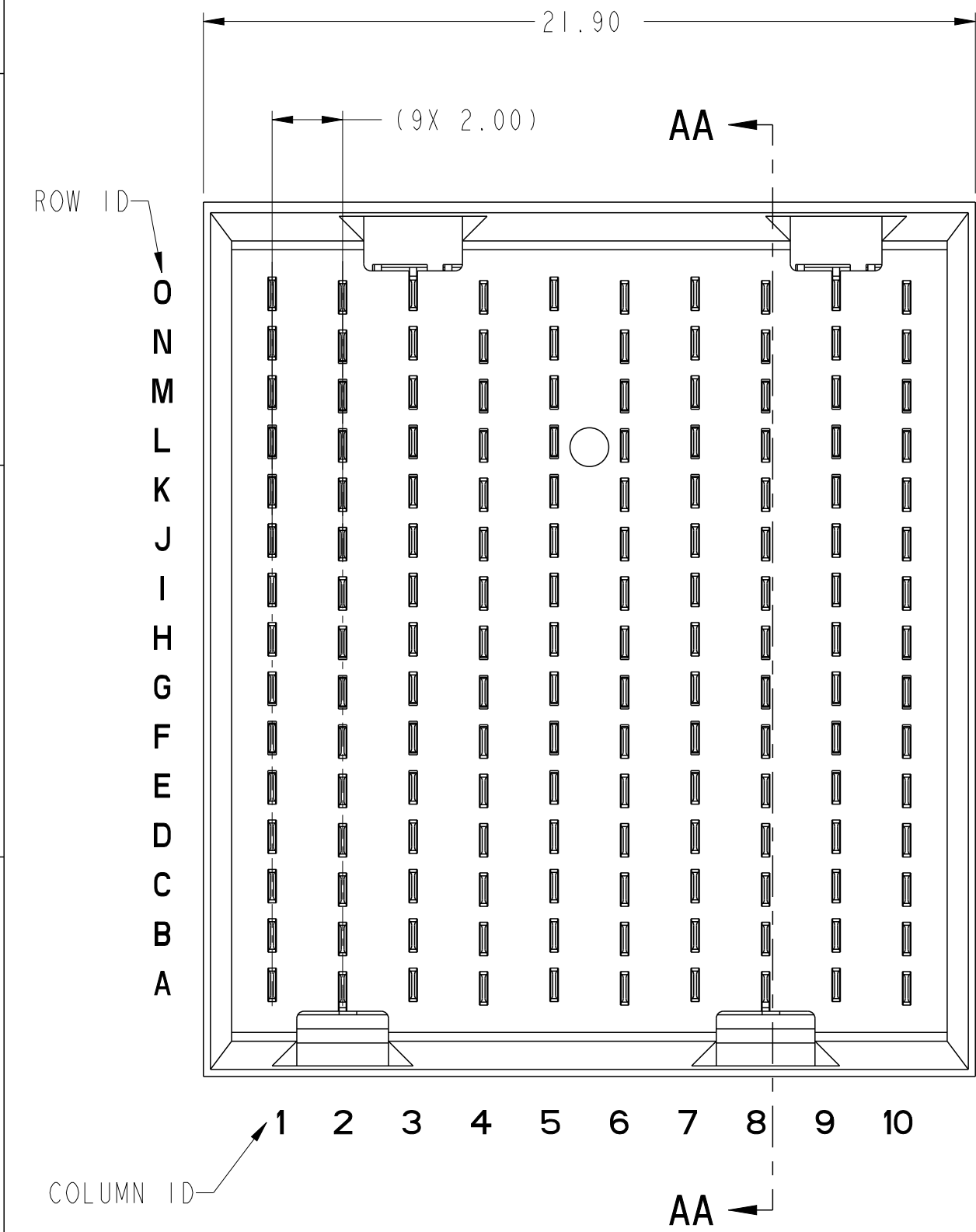


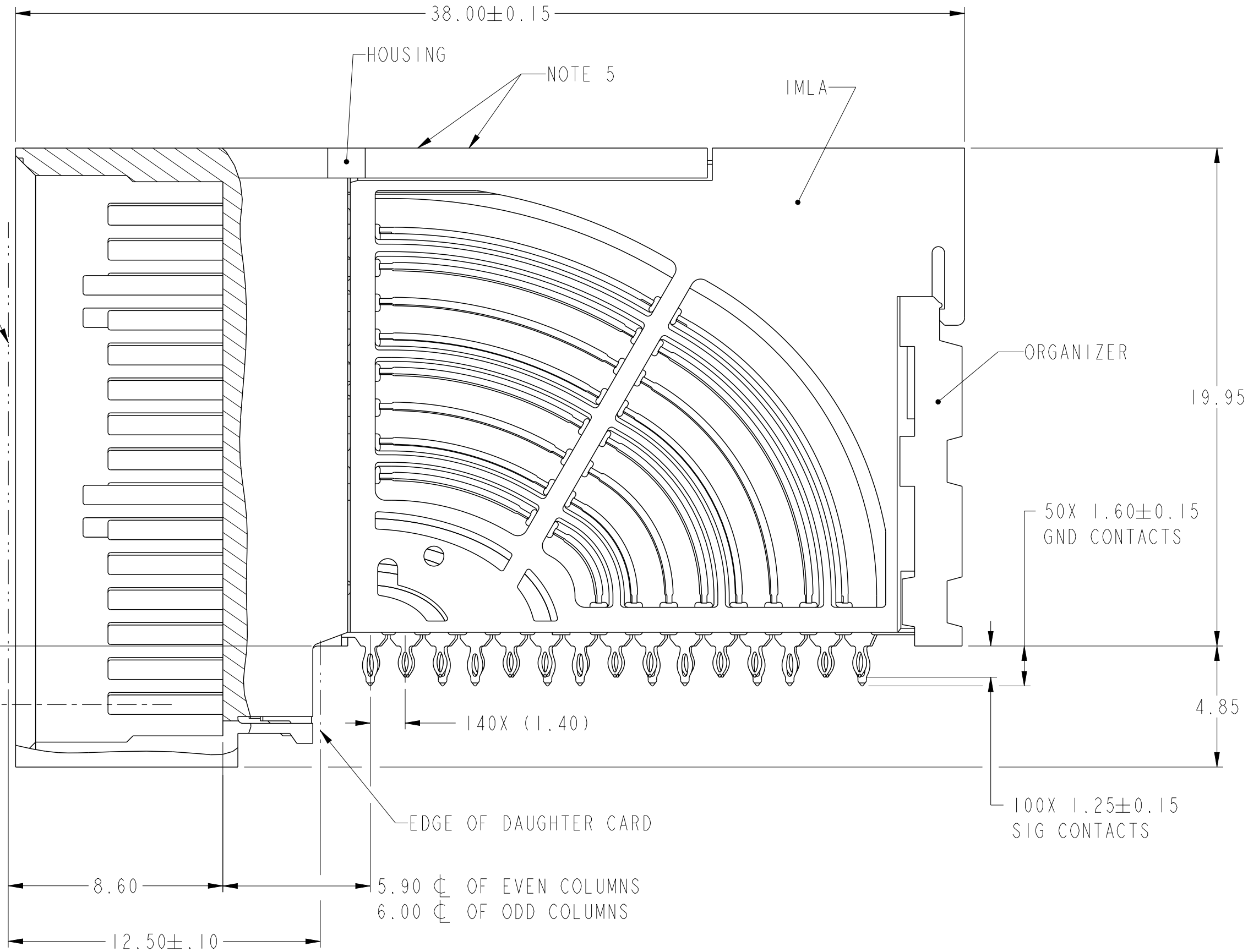
PRODUCT NUMBER
SEE SHEET 3



TOP SURFACE OF
MOTHER BOARD

TOP SURFACE OF
DAUGHTER CARD

2.35 ϕ OF EVEN COLUMNS
2.25 ϕ OF ODD COLUMNS



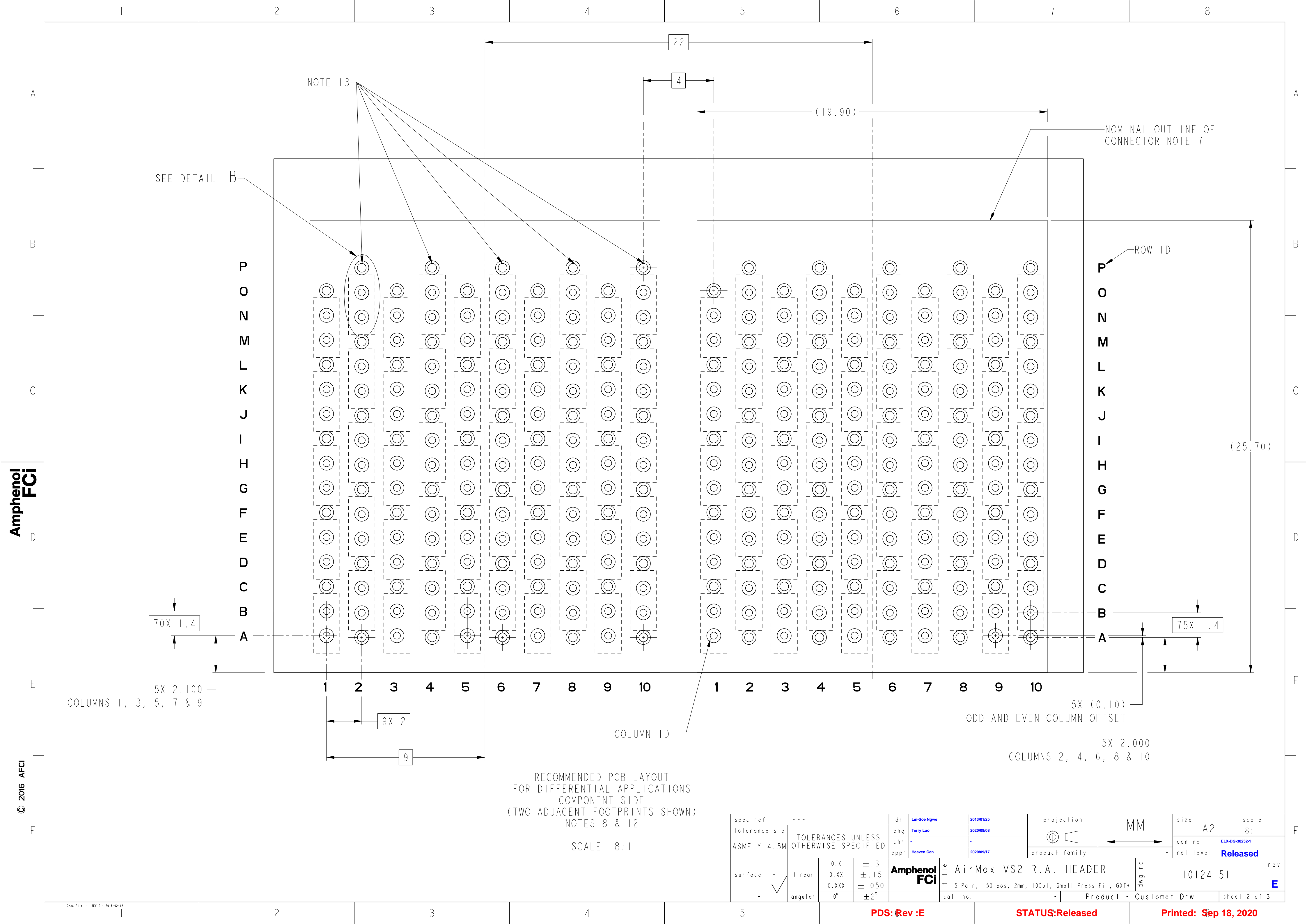
SECTION AA-AA

spec ref	---	dr	Lin-Soe Ngwe	2013/01/25	projection	MM	size	A2	scale	10:1
tolerance std	ASME Y14.5M	eng	Terry Luo	2020/09/08	chr	-	ecn no	ELX-DG-38252-1		
		chr	-	-	appr	Heaven Cen	2020/09/17	product family	-	rel level
surface	-	linear	0.X	±.3	0.XX	±.15	0.XXX	±.050	Amphenol FCI	title
		angular	0°	±2°						AirMax VS2 R.A. HEADER
										5 Pair, 150 pos, 2mm, 10Col, Small Press Fit, GXT+
										cat. no.
										Product - Customer Drw
										sheet 1 of 3

PDS: Rev :E

STATUS:Released

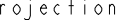


Printed: Sep 18, 2020



Amphenol
FCi

© 2016 APCI

RECOMMENDED PCB LAYOUT
FOR DIFFERENTIAL APPLICATIONS
COMPONENT SIDE
(TWO ADJACENT FOOTPRINTS SHOWN)
NOTES 8 & 12
SCALE 8:1

spec ref		---		dr	Lin-Soe Ngwe	2013/01/25	projection		MM		size	A2	scale	8:1	
tolerance std		TOLERANCES UNLESS OTHERWISE SPECIFIED		eng	Terry Luo	2020/09/08					ecn no	ELX-DG-38252-1			
ASME Y14.5M				chr	-	-					rel level	Released			
				appr	Heaven Cen	2020/09/17	product family		-						
surface	-		linear	0.X	±.3	Amphenol FCi	title	AirMax VS2 R.A. HEADER			dwg no	10124151		rev	E
				0.XX	±.15										
				0.XXX	±.050										
-			angular	0°	±2°		cat. no.	-	Product - Customer Drw			sheet 2 of 3			

PDS: Rev :E

STATUS:Released

Printed: Sep 18, 2020

