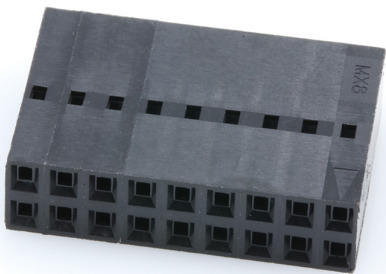




Part Number : [22552181](#)
Product Description : 2.54mm Pitch SL Crimp
Housing, Dual Row, Version A, Non-polarized,
18 Circuits, Black
Series Number : 70450
Status : Active
Product Category : Connector Housings
Engineering Number : 70450-0008



Documents & Resources

Drawings

[022552181_sd.pdf](#)
[PK-70450-100-001.pdf](#)

3D Models and Design Files


[022552181_stp.zip](#)

Specifications

[PS-70058-001.pdf](#)
[PS-70400-001.pdf](#)
[TS-70058-001-001.pdf](#)

Product Environment Compliance

Compliance

| | |
|--------------------|---|
| GADSL/IMDS | Not Relevant |
| China RoHS |  |
| EU ELV | Not Relevant |
| Low-Halogen Status | Not Low-Halogen per IEC 61249-2-21 |
| REACH SVHC | Not Contained per D(2024)7663-DC (21 Jan 2025) |
| EU RoHS | Compliant per EU 2015/863 |

[Multiple Part Product Compliance Statements](#)
- Eu RoHS

- REACH SVHC

- Low-Halogen

Multiple Part Industry Compliance Documents

- IPC 1752A Class C

- IPC 1752A Class D

- Molex Product Compliance Declaration

- IEC-62474

- chemSHERPA (xml)

EU RoHS Certificate of Compliance

Part Details

General

| | |
|--------------|--|
| Status | Active |
| Category | Connector Housings |
| Series | 70450 |
| Description | 2.54mm Pitch SL Crimp Housing, Dual Row, Version A, Non- polarized, 18 Circuits, Black |
| Application | Signal, Wire-to-Board |
| Comments | Version A |
| Product Name | SL |
| UPC | 800753588738 |

Agency

| | |
|-----|---------|
| CSA | LR19980 |
| UL | E29179 |

Physical

| | |
|--------------------|------------|
| Breakaway | No |
| Circuits (maximum) | 18 |
| Color - Resin | Black |
| Flammability | 94V-0 |
| Gender | Receptacle |
| Glow-Wire Capable | No |
| Material - Resin | Polyester |
| Net Weight | 1.530/g |

| | |
|-------------------------------|----------------|
| Number of Rows | 2 |
| Packaging Type | Bag |
| Panel Mount | No |
| Pitch - Mating Interface | 2.54mm |
| Stackable | Yes |
| Temperature Range - Operating | -40° to +105°C |

Solder Process Data

| | |
|------------------------------|-----|
| Lead-Free Process Capability | N/A |
|------------------------------|-----|

Mates With / Use With

Mates with Part(s)

| Description | Part Number |
|---|--------------|
| C-Grid Right-Angle Dual Row Headers | <u>70229</u> |
| C-Grid Right-Angle, Dual Row, Low Profile Headers | <u>70247</u> |
| C-Grid Vertical Dual Row Breakaway Headers | <u>70280</u> |
| C-Grid Vertical, Dual Row, Low Profile Headers | <u>70246</u> |

Use with Part(s)

| Description | Part Number |
|---------------------|--------------|
| SL Female Terminals | <u>70058</u> |
| SL Female Terminals | <u>71851</u> |