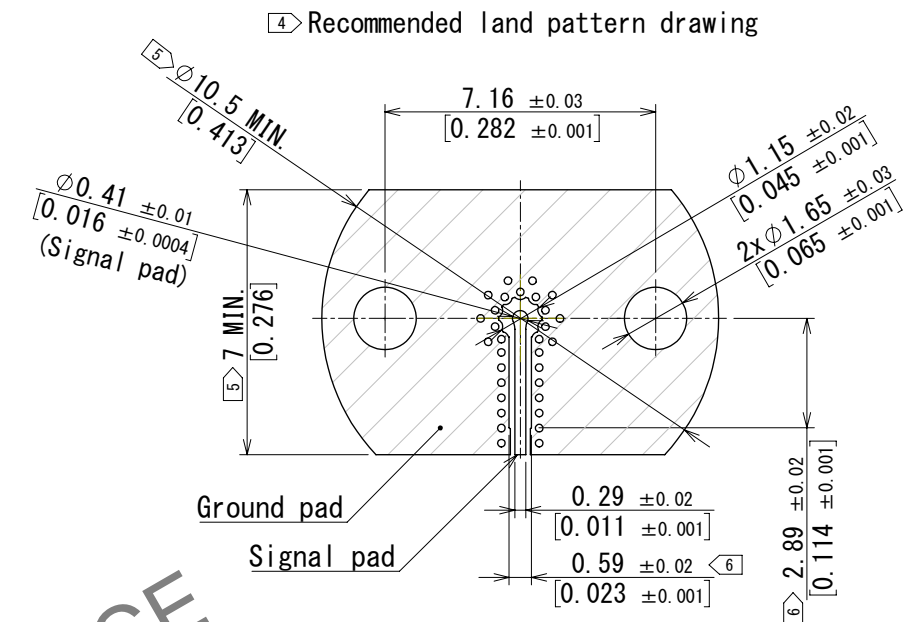
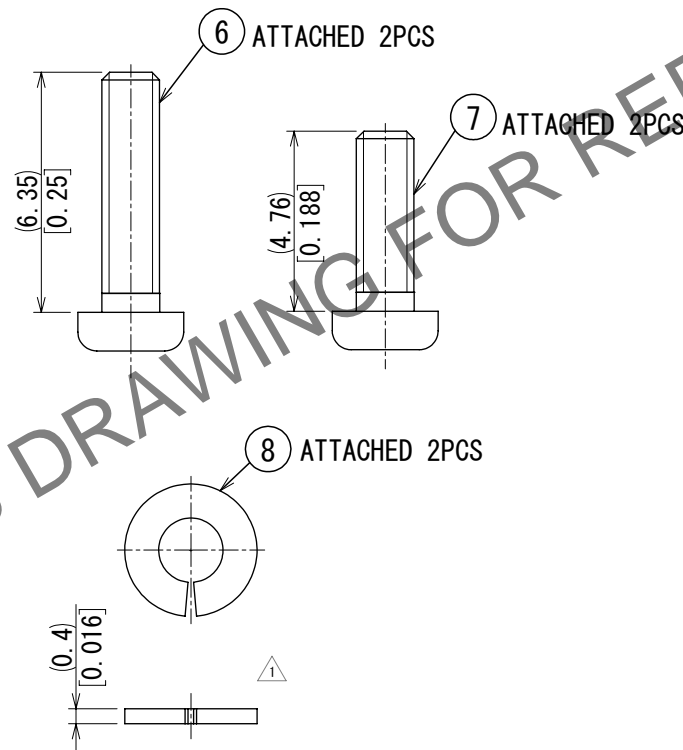
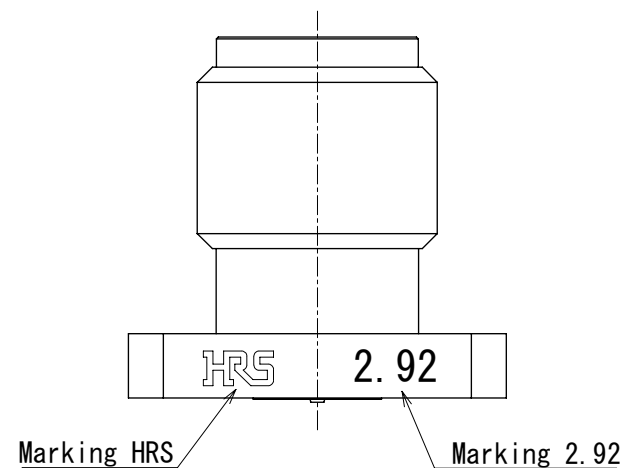
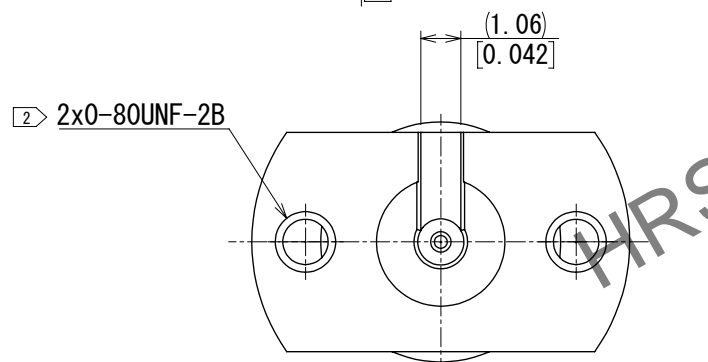
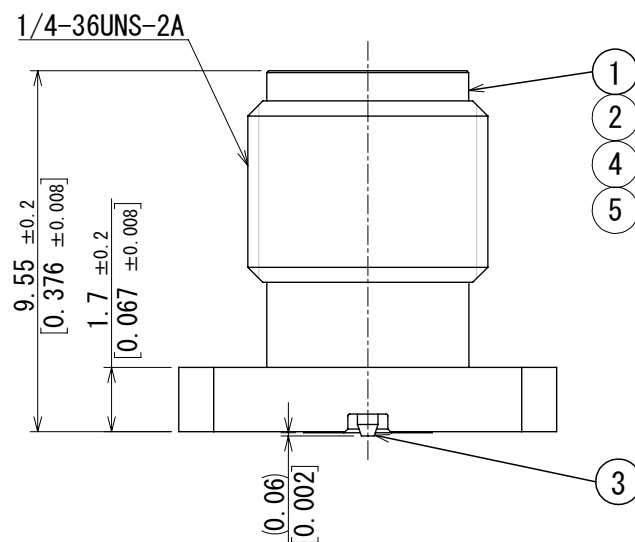
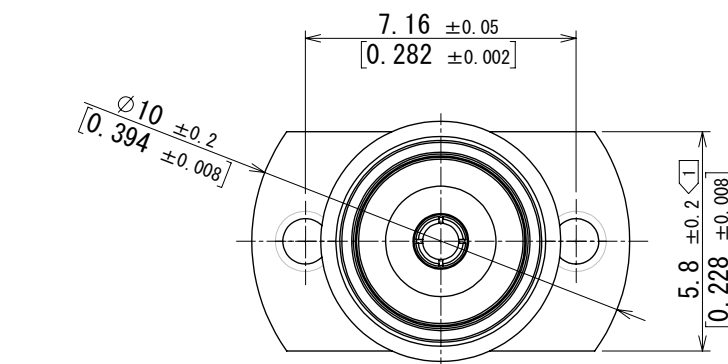
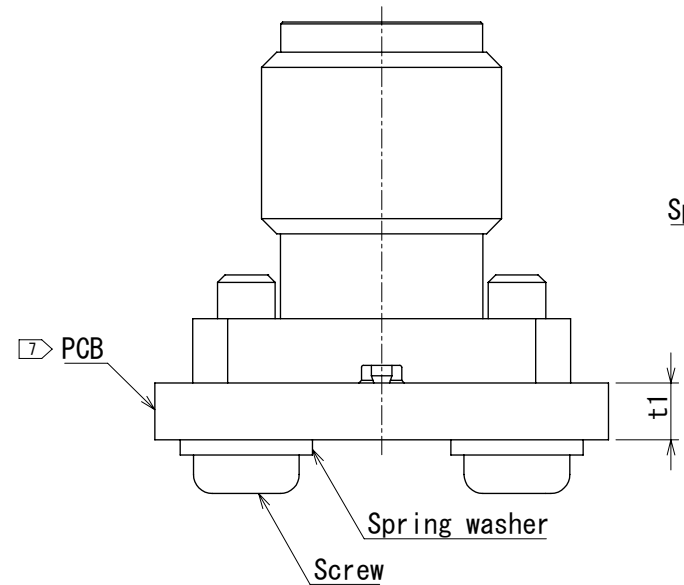


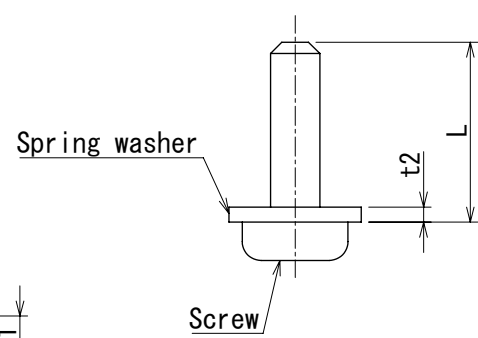
Sep.1.2024 Copyright 2024 HIROSE ELECTRIC CO., LTD. All Rights Reserved.  
In case of consideration for using Automotive equipment / device which demand high reliability, kindly contact our sales window correspondents.



PCB mounting drawing



0-80UNF Outline drawing



- 1 Please hold the connector flange with a spanner to avoid any torque acting on the PCB when the connector is mating.
- 2 0-80UNF screws recommended tightening torque is 0.09N·m.
- Please tighten the screws evenly during the connector mounting to ensure stable electrical contact.
- 3 Recommended length of the screws:  $L = t1(\text{PCB}) + t2(\text{spring washer}) + 2 \text{ mm}$  [0.08 in].
- 4 PCB design is changed depending on the PCB material, thickness and stackup.
- 5 The solder mask prohibited area is indicated.
- 6 The connector is placed over this area.
- 7 PCB thickness t1 should be 0.8 mm [0.032 in] or more.
8. This connector is not recommended for use in actual commercial equipment.

|                         |                  |                  |  |                 |                         |
|-------------------------|------------------|------------------|--|-----------------|-------------------------|
| 4                       | PEI              |                  | 8  | STAINLESS STEEL | (SPRING WASHER 2pcs)    |
| 3                       | BERYLLIUM COPPER | GOLD PLATING     | 7  | STEEL           | (0-80UNF 3/16in 2pcs)   |
| 2                       | STAINLESS STEEL  | PASSIVATED       | 6  | STEEL           | (0-80UNF 1/4in 2pcs)    |
| 1                       | BRASS            | NICKEL PLATING   | 5  | PTFE            |                         |
| NO.                     | MATERIAL         | FINISH , REMARKS | NO.  | MATERIAL        | FINISH , REMARKS        |
| UNITS<br>mm [inch]      |                  |                  |  |                 |                         |
| SCALE<br>5:1            |                  | COUNT<br>1       | DESCRIPTION OF REVISIONS<br>DIS-D-00016021 |                 | DESIGNED<br>TS. KANEKO  |
| APPROVED : TS. NAKAGAWA |                  | 2023. 05. 18     | DRAWING NO.<br>EDC-401976-15-00            |                 | CHECKED<br>TS. NAKAGAWA |
| CHECKED : TS. NAKAGAWA  |                  | 2023. 05. 18     | PART NO.<br>HK-R-SR2-SA (15)               |                 | DATE<br>2023. 06. 01    |
| DESIGNED : TS. KANEKO   |                  | 2023. 05. 18     | CODE NO.<br>CL0338-0028-0-15               |                 |                         |
| DRAWN : TS. KANEKO      |                  | 2023. 05. 18     |  |                 |                         |