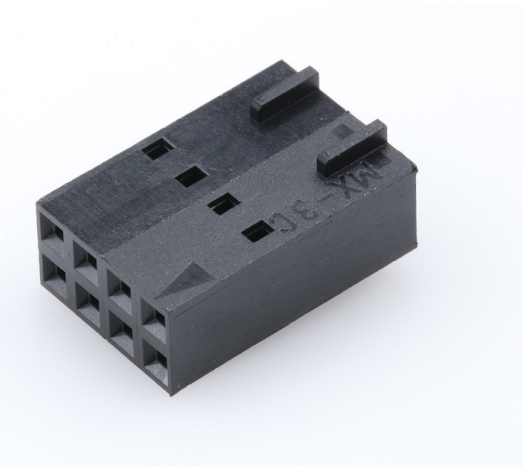




Part Number : [22552083](#)
Product Description : 2.54mm Pitch SL Crimp
Housing, Dual Row, Version C, Back Ribs, 8
Circuits, Black
Series Number : 70450
Status : Active
Product Category : Connector Housings
Engineering Number : 704500102



Documents & Resources

Drawings

[022552083_sd.pdf](#)
[PK-70450-100-001.pdf](#)

3D Models and Design Files


[022552083_stp.zip](#)

Specifications

[PS-70058-001.pdf](#)
[PS-70400-001.pdf](#)
[TS-70058-001-001.pdf](#)

Product Environment Compliance

Compliance

GADSL/IMDS	Not Relevant
China RoHS	
EU ELV	Not Relevant
Low-Halogen Status	Not Low-Halogen per IEC 61249-2-21
REACH SVHC	Not Contained per D(2024)7663-DC (21 Jan 2025)
EU RoHS	Compliant per EU 2015/863

Multiple Part Product Compliance Statements

- Eu RoHS

- REACH SVHC

- Low-Halogen

Multiple Part Industry Compliance Documents

- IPC 1752A Class C

- IPC 1752A Class D

- Molex Product Compliance Declaration

- IEC-62474

- chemSHERPA (xml)

EU RoHS Certificate of Compliance

Part Details

General

Status	Active
Category	Connector Housings
Series	70450
Description	2.54mm Pitch SL Crimp Housing, Dual Row, Version C, Back Ribs, 8 Circuits, Black
Application	Signal, Wire-to-Board
Comments	Version C
Product Name	SL
UPC	800754396189

Agency

CSA	LR19980
UL	E29179

Physical

Breakaway	No
Circuits (maximum)	8
Color - Resin	Black
Flammability	94V-0
Gender	Receptacle
Glow-Wire Capable	No
Material - Resin	Polyester
Net Weight	0.712/g

Number of Rows	2
Packaging Type	Bag
Panel Mount	No
Pitch - Mating Interface	2.54mm
Stackable	Yes
Temperature Range - Operating	-40° to +105°C

Solder Process Data

Lead-Free Process Capability	N/A
------------------------------	-----

Mates With / Use With

Mates with Part(s)

Description	Part Number
C-Grid Right-Angle Dual Row Headers	<u>70229</u>
C-Grid Right-Angle, Dual Row, Low Profile Headers	<u>70247</u>
C-Grid Vertical Dual Row Breakaway Headers	<u>70280</u>
C-Grid Vertical, Dual Row, Low Profile Headers	<u>70246</u>

Use with Part(s)

Description	Part Number
SL Female Terminals	<u>70058</u>
SL Female Terminals	<u>71851</u>