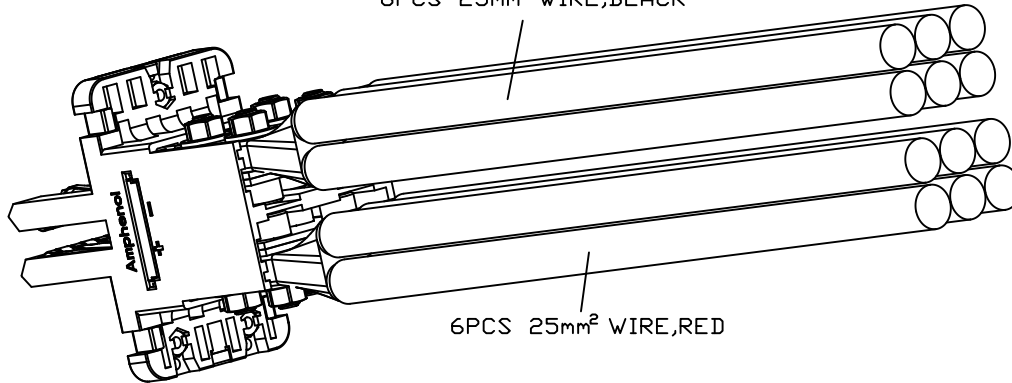
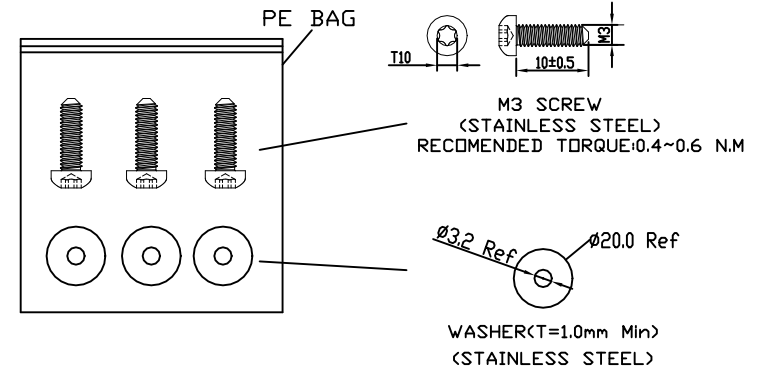
END "A"  
BK600 CONNECTOR6PCS 25mm<sup>2</sup> WIRE,BLACK6PCS 25mm<sup>2</sup> WIRE,RED

(3D VIEW)

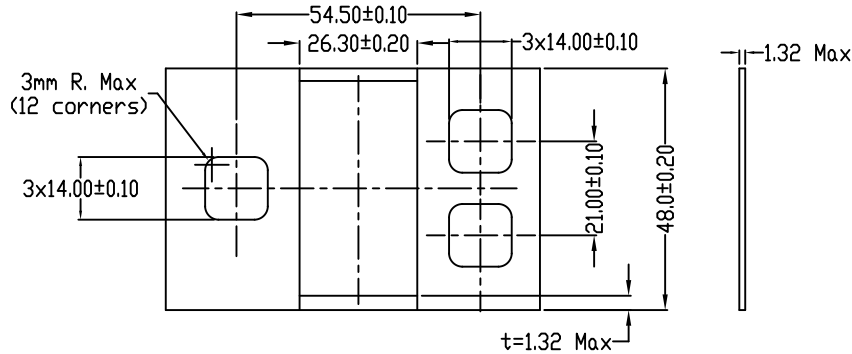
M3 SCREW  
(STAINLESS STEEL)  
RECOMMENDED TORQUE:0.4~0.6 N.MWASHER(T=1.0mm Min)  
(STAINLESS STEEL)

spec ref				dir Andy Zhuang 11/27'24		<b>Amphenol Power Solutions</b>		MM		scale NA	size A3
tolerance std		TOLERANCES UNLESS OTHERWISE SPECIFIED		eng Andy Zhuang 11/27'24				ecr no			
				rvwr Siny Hu 11/27'24				rel level			
				appr Siny Hu 11/27'24		A Division of Amphenol Corporation amphenol-icc.com					
surface	linear	0.X	±0.3	projection	BARKLIP CABLE ASSEMBLY	10164745-1SP092LF	cat. no.	rev			
		0.XX	±0.25								
		0.XXX	±								
	angular	0°	±°								
				product family BK600		Product - Customer Drw		sheet 1 of 2			

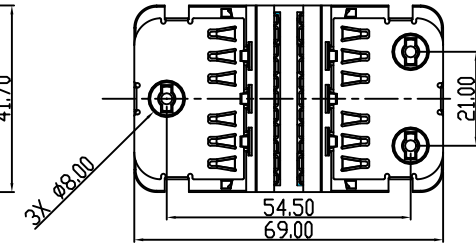
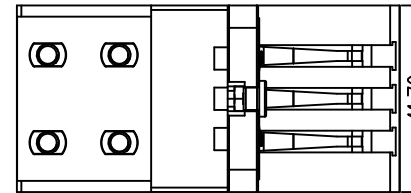
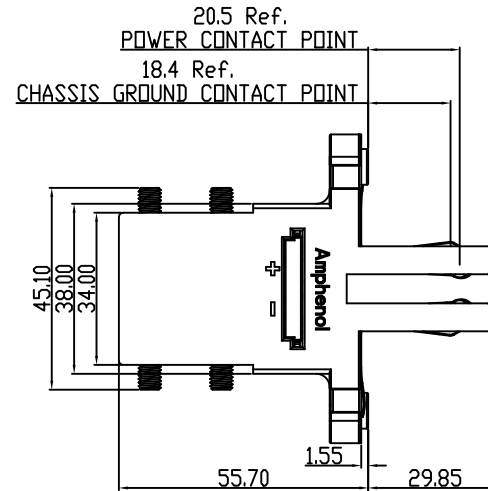
Dwg File:PH-PWR-ACC-REV A1223-07-13

## NOTES:

1. END\*A\* MATE WITH 6.00±0.20mm THICKNESS SILVER PLATING BUSBAR
2. ALL CABLE ASSEMBLIES SHALL 100% OPEN/SHORT TEST
3. SILVER PLATING CONTACT MAY DISCOLOR IN AIR, BUT NO PERFORMANCE ISSUE
4. AS LONG AS WIRE PIN ASSIGNMENT IS CORRECT, THE DIFFERENT COLOR CABLE LINE ON TOP OR BOTTOM CAN BE ACCEPTED. CROSS POINT POSITION IS ALSO NOT LIMITED.
5. MOUNTING HARDWARE:  
3xM3 SCREWS  
3x20mm dia. WASHERS  
TORQUE SPEC: 0.4~0.6 N.M



RECOMMENDED PANEL LAYOUT



spec ref				dr Andy Zhuang		11/27'24		<div>Amphenol Power Solutions</div> <div>A Division of Amphenol Corporation    amphenol-icc.com</div>		MM		scale NA		size A3			
tolerance std				eng Andy Zhuang		11/27'24				ecm no							
TOLERANCES UNLESS OTHERWISE SPECIFIED				rvwr Siny Hu		11/27'24				rel level							
				appr Siny Hu		11/27'24											
surface		linear		0.X		±0.3		projection		title		BARKLIP CABLE ASSEMBLY		part no 10164745-1SP092LF		rev A	
				0.XX		±0.25											
				0.XXX		±											
		angular		0°		±°				product family BK600		Product - Customer Drw		sheet 2 of 2		cat. no.	

Dwg File: PHS-PUB-402 REV A J2023-07-13