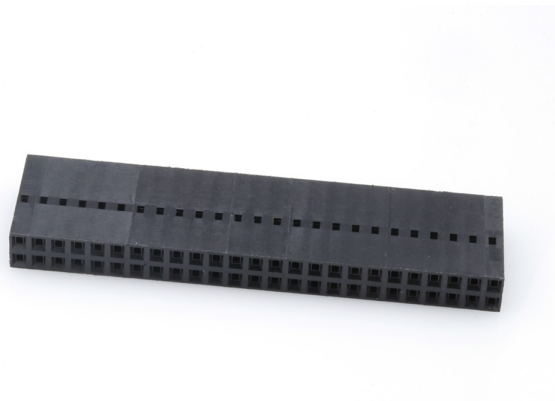




**Part Number :** [22552501](#)  
**Product Description :** 2.54mm Pitch SL Crimp  
Housing, Dual Row, Version A, Non-polarized,  
50 Circuits, Black  
**Series Number :** 70450  
**Status :** Active  
**Product Category :** Connector Housings  
**Engineering Number :** 70450-0024



Documents & Resources

**Drawings**  
[022552501\\_sd.pdf](#)  
[PK-70450-100-001.pdf](#)

**3D Models and Design Files**  
[022552501\\_stp.zip](#)

**Specifications**  
[PS-70058-001.pdf](#)  
[PS-70400-001.pdf](#)  
[TS-70058-001-001.pdf](#)

Product Environment Compliance

Compliance

GADSL/IMDS	Not Relevant
China RoHS	
EU ELV	Not Relevant
Low-Halogen Status	Not Low-Halogen per IEC 61249-2-21
REACH SVHC	Not Contained per D(2024)7663-DC (21 Jan 2025)
EU RoHS	Compliant per EU 2015/863

Multiple Part Product Compliance Statements  
- Eu RoHS

- REACH SVHC

- Low-Halogen

#### Multiple Part Industry Compliance Documents

- IPC 1752A Class C

- IPC 1752A Class D

- Molex Product Compliance Declaration

- IEC-62474

- chemSHERPA (xml)

#### EU RoHS Certificate of Compliance

---

## Part Details

### General

Status	Active
Category	Connector Housings
Series	70450
Description	2.54mm Pitch SL Crimp Housing, Dual Row, Version A, Non- polarized, 50 Circuits, Black
Application	Signal, Wire-to-Board
Comments	Version A
Product Name	SL
UPC	800753626188

### Agency

CSA	LR19980
UL	E29179

### Physical

Breakaway	No
Circuits (maximum)	50
Color - Resin	Black
Flammability	94V-0
Gender	Receptacle
Glow-Wire Capable	No
Material - Resin	Polyester
Net Weight	4.250/g

Number of Rows	2
Packaging Type	Bag
Panel Mount	No
Pitch - Mating Interface	2.54mm
Stackable	Yes
Temperature Range - Operating	-40° to +105°C

## Solder Process Data

Lead-Free Process Capability	N/A
------------------------------	-----

---

## Mates With / Use With

### Mates with Part(s)

Description	Part Number
C-Grid Right-Angle Dual Row Headers	<u>70229</u>
C-Grid Right-Angle, Dual Row, Low Profile Headers	<u>70247</u>
C-Grid Vertical Dual Row Breakaway Headers	<u>70280</u>
C-Grid Vertical, Dual Row, Low Profile Headers	<u>70246</u>

### Use with Part(s)

Description	Part Number
SL Female Terminals	<u>70058</u>
SL Female Terminals	<u>71851</u>