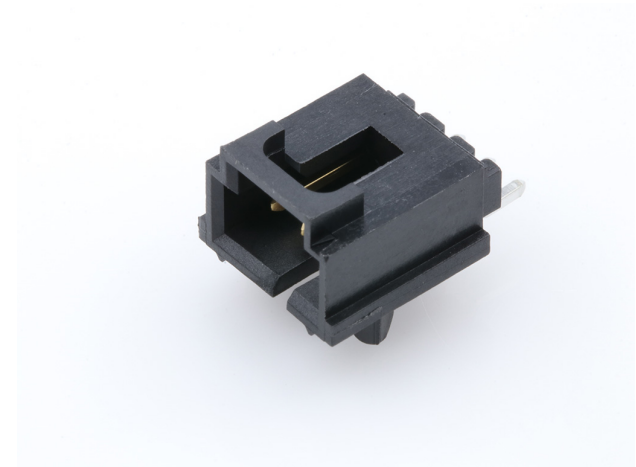




Part Number : [15913034](#)
Product Description : 2.54mm Pitch SL Wire-to-Board Header, Low Profile, Surface Mount, Single Row, Right-Angle, 3.05mm Pocket, Shrouded, with Press-fit Plastic Peg, 3 Circuits, Tin (Sn) Plating
Series Number : 70634
Status : Active
Product Category : PCB Headers and Receptacles
Engineering Number : 70634-0002



Documents & Resources

Drawings

[015913034_sd.pdf](#)
[PK-70873-016-001.pdf](#)

3D Models and Design Files


[015913034_stp.zip](#)

Specifications

[PS-70400-001.pdf](#)
[PS-70541-001.pdf](#)
[TS-70541-100-001.pdf](#)

Product Environment Compliance

Compliance

| | |
|--------------------|---|
| GADSL/IMDS | Compliant with Exemption 44; 33 |
| China RoHS |  |
| EU ELV | Not Relevant |
| Low-Halogen Status | Not Low-Halogen per IEC 61249-2-21 |
| REACH SVHC | Not Contained per D(2024)4144-DC (27 June 2024) |
| EU RoHS | Compliant per EU 2015/863 |

[Multiple Part Product Compliance Statements](#)
- Eu RoHS

- REACH SVHC

- Low-Halogen

Multiple Part Industry Compliance Documents

- IPC 1752A Class C

- IPC 1752A Class D

- Molex Product Compliance Declaration

- IEC-62474

- chemSHERPA (xml)

EU RoHS Certificate of Compliance

Part Details

General

| | |
|----------------|--|
| Status | Active |
| Category | PCB Headers and Receptacles |
| Series | 70634 |
| Description | 2.54mm Pitch SL Wire-to-Board Header, Low Profile, Surface Mount, Single Row, Right-Angle, 3.05mm Pocket, Shrouded, with Press-fit Plastic Peg, 3 Circuits, Tin (Sn) Plating |
| Application | Signal, Wire-to-Board |
| Component Type | PCB Header |
| Product Name | SL |
| UPC | 800753772052 |

Agency

| | |
|-----|---------|
| CSA | LR19980 |
| UL | E29179 |

Electrical

| | |
|-------------------------------|------|
| Current - Maximum per Contact | 3.0A |
| Voltage - Maximum | 250V |

Physical

| | |
|-------------------|----|
| Breakaway | No |
| Circuits (Loaded) | 3 |

| | |
|--------------------------------|--------------------------------|
| Circuits (maximum) | 3 |
| Color - Resin | Black |
| Durability (mating cycles max) | 25 |
| Flammability | 94V-0 |
| Glow-Wire Capable | No |
| Lock to Mating Part | Yes |
| Material - Metal | Brass, Phosphor Bronze |
| Material - Plating Mating | Tin |
| Material - Plating Termination | Tin |
| Material - Resin | High Temperature Thermoplastic |
| Net Weight | 0.879/g |
| Number of Rows | 1 |
| Orientation | Right Angle |
| Packaging Type | Tube |
| PCB Locator | Yes |
| PCB Retention | Yes |
| PCB Thickness - Recommended | 1.60mm |
| Pitch - Mating Interface | 2.54mm |
| Plating min - Mating | 3.810µm |
| Plating min - Termination | 3.810µm |
| Polarized to Mating Part | Yes |
| Polarized to PCB | Yes |
| Shrouded | Fully |
| Stackable | No |
| Temperature Range - Operating | -40° to +105°C |
| Termination Interface Style | Surface Mount |

Solder Process Data

| | |
|------------------------------|--------|
| Max-Duration | 20 |
| Lead-Free Process Capability | REFLOW |
| Max-Cycle | 1 |
| Max-Temp | 260 |

Mates With / Use With

Mates with Part(s)

| Description | Part Number |
|---|--------------|
| SL Single Row Crimp Housings and CPA Retainers | <u>70066</u> |
| SL Single Row Female Insulation Displacement Connector Assemblies | <u>70400</u> |
| SL Single Row Female Receptacles | <u>70430</u> |

This document was generated on Feb 26, 2025