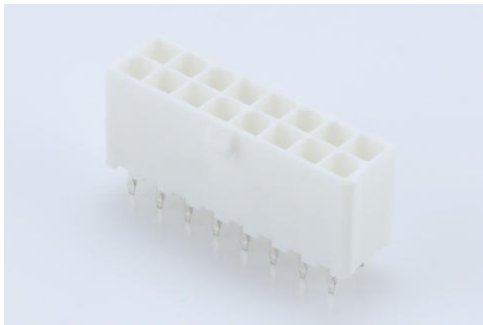




**Part Number :** [39288160](#)  
**Product Description :** Mini-Fit Jr. Vertical Header,  
4.20mm Pitch, Dual Row, 16 Circuits, without Snap-in  
Plastic Peg PCB Lock, Tin, Natural  
**Series Number :** 5566  
**Status :** Active  
**Product Category :** PCB Headers and Receptacles  
**Engineering Number :** 5566-16A-210



Documents & Resources


**Drawings**  
[039288160 sd.pdf](#)  
[PK-5566-000.pdf](#)

**3D Models and Design Files**  
[039288160 stp.zip](#)

**Specifications**  
[AS-5557-001-001.pdf](#)  
[PK-5566-003-001.pdf](#)  
[PS-5556-001-001.pdf](#)  
[TS-5556-002-001.pdf](#)

Product Environment Compliance

Compliance

GADSL/IMDS	Compliant with Exemption 44
China RoHS	 per SJ/T 11365-2006
EU ELV	Not Relevant
Low-Halogen Status	Low-Halogen per IEC 61249-2-21
REACH SVHC	Not Contained per D(2024)7663-DC (21 Jan 2025)
EU RoHS	Compliant per EU 2015/863

[Compliance Statements](#)

- EU RoHS
- REACH SVHC
- Low-Halogen

#### Industry Documents

- IPC 1752A Class C
- IPC 1752A Class D
- Molex Product Compliance Declaration
- IEC-62474
- chemSHERPA (xml)

#### Substances of Interest

- PFAS

#### EU RoHS Certificate of Compliance

#### Additional Product Compliance Information

## Part Details

### General

Status	Active
Category	PCB Headers and Receptacles
Series	5566
Description	Mini-Fit Jr. Vertical Header, 4.20mm Pitch, Dual Row, 16 Circuits, without Snap-in Plastic Peg PCB Lock, Tin, Natural
Application	Power, Wire-to-Board
Comments	The 5566 header should be used with standard Mini-Fit female terminals. If increased amperage of up to 13A per circuit is needed, please consider using the Mini-Fit Plus HCS family 45750 terminals with 46015 headers; See Molex Product specification PS-5666-001 for current de-rating information.
Component Type	PCB Header
Product Name	Mini-Fit Jr.
UPC	800753683778

### Agency

CSA	LR19980
-----	---------

UL	E29179
----	--------

## Electrical

Current - Maximum per Contact	9.0A
Voltage - Maximum	600V

## Physical

Breakaway	No
Circuits (Loaded)	16
Circuits (maximum)	16
Color - Resin	Natural
Durability (mating cycles max)	30
First Mate / Last Break	No
Flammability	94V-0
Glow-Wire Capable	No
Guide to Mating Part	No
Keying to Mating Part	None
Lock to Mating Part	Yes
Material - Metal	Brass
Material - Plating Mating	Tin
Material - Plating Termination	Tin
Material - Resin	Nylon
Net Weight	4.390/g
Number of Rows	2
Orientation	Vertical
Packaging Type	Bag
PCB Locator	Yes
PCB Retention	None
PCB Thickness - Recommended	1.60mm
PC Tail Length	3.50mm
Pitch - Mating Interface	4.20mm
Pitch - Termination Interface	4.20mm
Plating min - Mating	0.889µm
Plating min - Termination	0.889µm
Polarized to Mating Part	Yes

Polarized to PCB	Yes
Shrouded	Fully
Stackable	No
Temperature Range - Operating	-40° to +105°C
Termination Interface Style	Through Hole

### Solder Process Data

Max-Duration	5
Lead-Free Process Capability	WAVE
Max-Cycle	1
Max-Temp	240

---

### Mates With / Use With

#### Mates with Part(s)

Description	Part Number
Mini-Fit Jr. Receptacle Housings	<u>5557</u>
Mini-Fit TPA2 and Mini-Fit Sigma Dual Row Receptacle Housings	<u>172708</u>