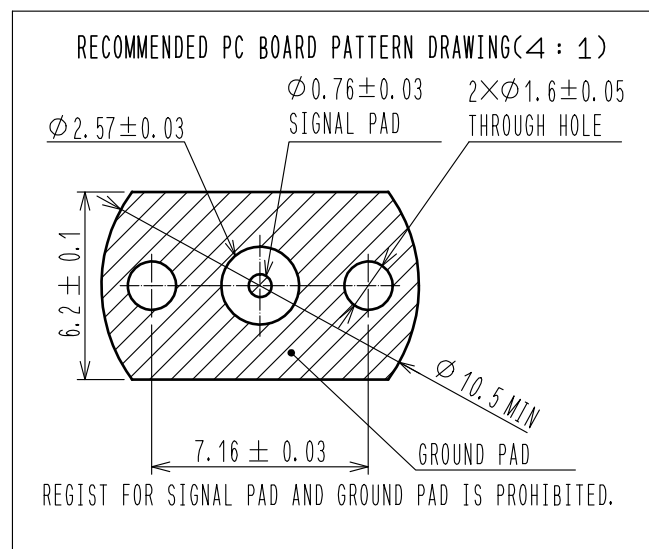
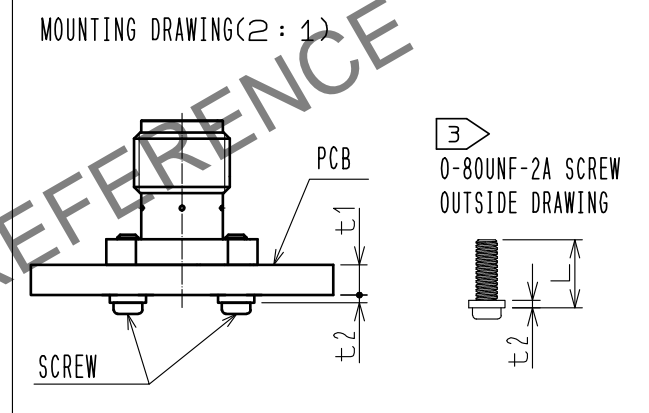
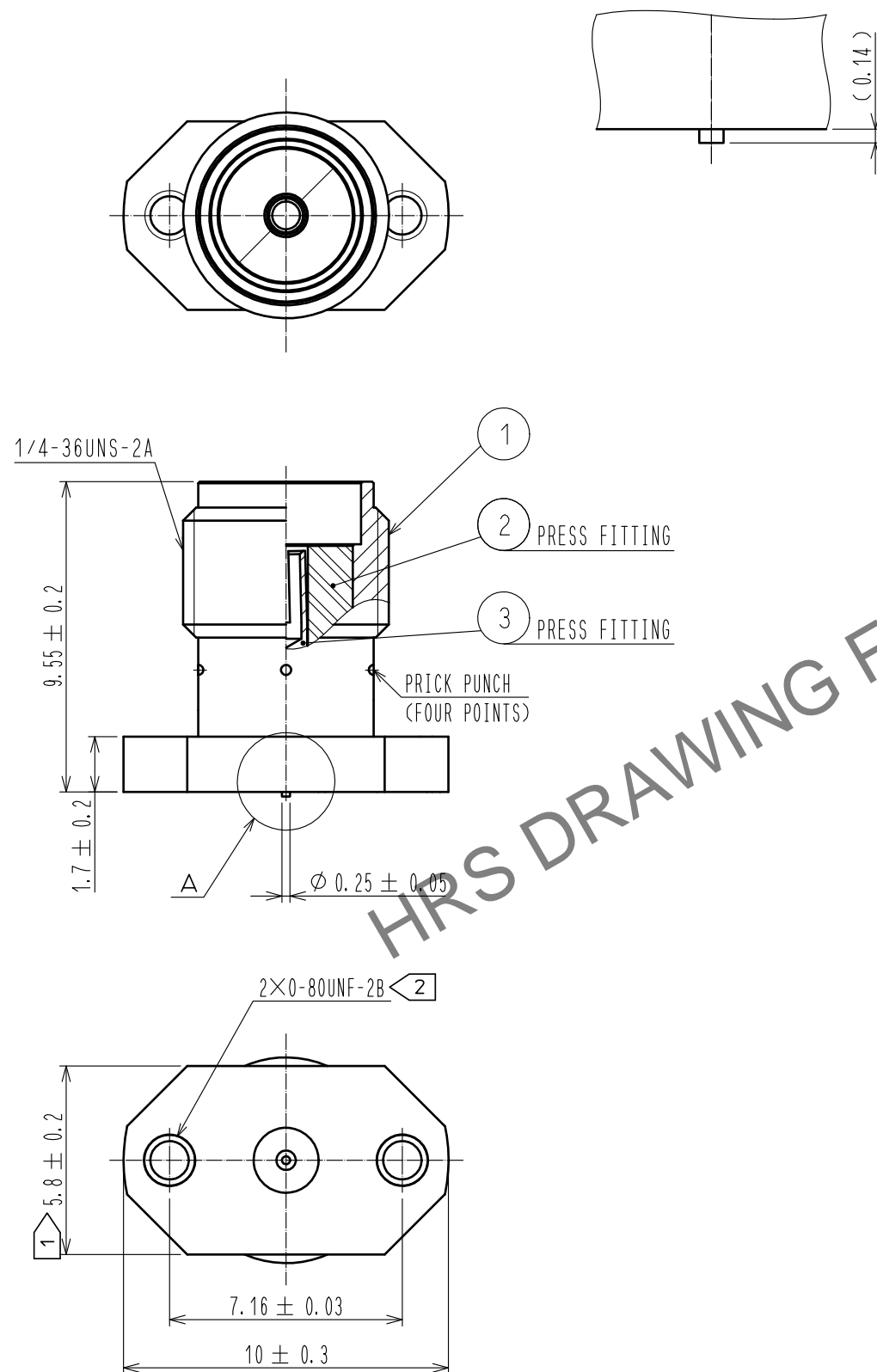


Aug.1.2024 Copyright 2024 HIROSE ELECTRIC CO., LTD. All Rights Reserved.
In case of consideration for using Automotive equipment / device which demand high reliability, kindly contact our sales window correspondents.

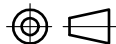



Unified screw thread type

A(10 : 1)

- NOTES
- 1 WHEN THE MATING CONNECTOR, PLEASE HOLD MILLING AREA OF 5.8 ± 0.2 WITH A WRENCH.
 - 2 0-80UNF-2B SCREW TIGHTENING TORQUE IS $0.09N \cdot m$.
PLEASE TIGHTEN THE SCREWS EVENLY WHEN MOUNTING THE CONNECTORS TO ENSURE STABLE ELECTRICAL CONTACT.
 - 3 PLEASE USE A PCB MOUNTING SCREW OF THE LENGTH OF L(mm).
THE LENGTH OF L(mm) IS PCB THICKNESS t1(mm) + SPRING WASHER THICKNESS t2(mm) + 2(mm).
PLEASE USE A SCREW WITH SPRING WASHER.
 - 4 THIS PRODUCT IS A SOLDERLESS MOUNTED CONNECTOR FOR PROTOTYPE EVALUATION OF HIGH SPEED TRANSMISSION BOARDS.
IT IS NOT RECOMMENDED FOR USE IN ACTUAL COMMERCIAL EQUIPMET.



RoHS COMPLIANT

2		PTFE				RoHS COMPLIANT									
1		BRASS		GOLD PLATING		3		BERYLLIUM COPPER		GOLD PLATING					
NO.		MATERIAL		FINISH , REMARKS		NO.		MATERIAL		FINISH , REMARKS					
UNITS mm				SCALE 5 : 1		 COUNT 1		DESCRIPTION OF REVISIONS DIS-D-00016695		DESIGNED NM. TORIUMI		CHECKED TS. KANEKO		DATE 20230824	
 HIROSE ELECTRIC CO., LTD.				APPROVED :MH. YAMANE		20120210		DRAWING NO.		EDC-339103-00-00					
				CHECKED :MH. TSUCHIDA		20120210		PART NO.		HRM(G)-300-468B-1					
				DESIGNED :RO. YOKOYAMA		20120210		CODE NO.		CL0323-0924-8-00					
				DRAWN :RO. YOKOYAMA		20120210		 1							