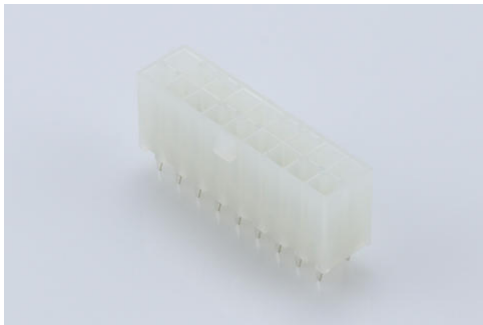




Part Number : [39281183](#)
Product Description : Mini-Fit Jr. Vertical Header,
4.20mm Pitch, Dual Row, 18 Circuits, without Snap-in
Plastic Peg PCB Lock, Tin, Natural
Series Number : 5566
Status : Active
Product Category : PCB Headers and Receptacles
Engineering Number : 5566-18A



Documents & Resources


Drawings
[039281183 sd.pdf](#)
[PK-5566-000.pdf](#)

3D Models and Design Files
[039281183 stp.zip](#)

Specifications
[AS-5557-001-001.pdf](#)
[PK-5566-003-001.pdf](#)
[PS-5556-001-001.pdf](#)
[TS-5556-002-001.pdf](#)

Product Environment Compliance..

Compliance

GADSL/IMDS	Compliant with Exemption 44
China RoHS	 per SJ/T 11365-2006
EU ELV	Not Relevant
Low-Halogen Status	Low-Halogen per IEC 61249-2-21
REACH SVHC	Not Contained per D(2024)6225-DC (07 Nov 2024)
EU RoHS	Compliant per EU 2015/863

[Compliance Statements](#)

- EU RoHS
- REACH SVHC
- Low-Halogen

Industry Documents

- IPC 1752A Class C
- IPC 1752A Class D
- Molex Product Compliance Declaration
- IEC-62474
- chemSHERPA (xml)

Substances of Interest

- PFAS

EU RoHS Certificate of Compliance

Additional Product Compliance Information

Part Details

General

Status	Active
Category	PCB Headers and Receptacles
Series	5566
Description	Mini-Fit Jr. Vertical Header, 4.20mm Pitch, Dual Row, 18 Circuits, without Snap-in Plastic Peg PCB Lock, Tin, Natural
Application	Power, Wire-to-Board
Comments	The 5566 header should be used with standard Mini-Fit female terminals. If increased amperage of up to 13A per circuit is needed, please consider using the Mini-Fit Plus HCS family 45750 terminals with 46015 headers; See Molex Product specification PS-5666-001 for current de-rating information.
Component Type	PCB Header
Product Name	Mini-Fit Jr.
UPC	800753581647

Agency

CSA	LR19980
-----	---------

UL	E29179
----	--------

Electrical

Current - Maximum per Contact	9.0A
Voltage - Maximum	600V

Physical

Breakaway	No
Circuits (Loaded)	18
Circuits (maximum)	18
Color - Resin	Natural
Durability (mating cycles max)	30
First Mate / Last Break	No
Flammability	94V-2
Glow-Wire Capable	No
Guide to Mating Part	No
Keying to Mating Part	None
Lock to Mating Part	Yes
Material - Metal	Brass
Material - Plating Mating	Tin
Material - Plating Termination	Tin
Material - Resin	Nylon
Net Weight	3.750/g
Number of Rows	2
Orientation	Vertical
Packaging Type	Bag
PCB Locator	Yes
PCB Retention	None
PCB Thickness - Recommended	1.60mm
PC Tail Length	3.50mm
Pitch - Mating Interface	4.20mm
Pitch - Termination Interface	4.20mm
Plating min - Mating	0.889µm
Plating min - Termination	0.889µm
Polarized to Mating Part	Yes

Polarized to PCB	Yes
Shrouded	Fully
Stackable	No
Temperature Range - Operating	-40° to +105°C
Termination Interface Style	Through Hole

Solder Process Data

Max-Duration	5
Lead-Free Process Capability	WAVE
Max-Cycle	1
Max-Temp	240

Mates With / Use With

Mates with Part(s)

Description	Part Number
Mini-Fit Jr. Receptacle Housings	<u>5557</u>
Mini-Fit TPA2 and Mini-Fit Sigma Dual Row Receptacle Housings	<u>172708</u>