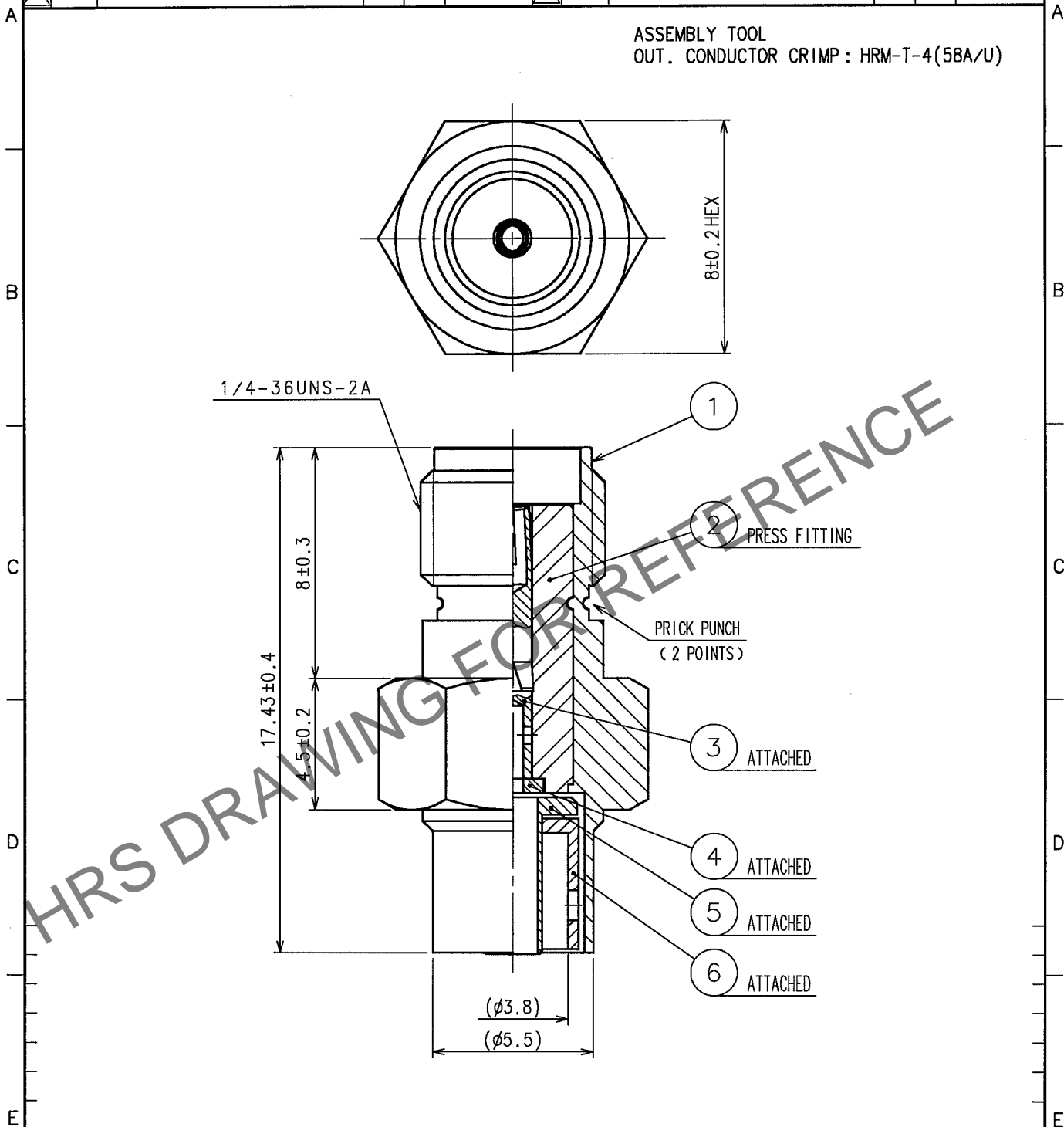
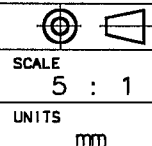


Sep.1.2024 Copyright 2024 HIROSE ELECTRIC CO., LTD. All Rights Reserved.
In case of consideration for using Automotive equipment / device which demand high reliability, kindly contact our sales window correspondents.

1			2			3			4		
COUNT	DESCRIPTION OF REVISIONS			BY	CHKD	DATE	COUNT	DESCRIPTION OF REVISIONS			DATE
△							△				.
△							△				.
△							△				.



3	BERYLLIUM COPPER	GOLD PLATED	6	BRASS	NICKEL PLATED
2	PTFE		5	BRASS	NICKEL PLATED
1	BRASS	NICKEL PLATED	4	PTFE	
NO.	MATERIAL	FINISH, REMARKS	NO.	MATERIAL	FINISH, REMARKS
CODE NO. (OLD) CL			DRAWN T.KATAYAMA 05.03.31	DESIGNED T.KATAYAMA 05.03.31	CHECKED M. Yamane 05.03.31
RoHS COMPLIANT			APPROVED J. Mitani 05.03.31		
RELEASED					
DRAWING NO. EDC4-136782-40			PART NO. HRM-200-1.5WJBN(40)		
CODE NO. CL323-0711-7-40					
1			1		



HIROSE ELECTRIC CO., LTD.

CL323-0711-7-40

FORM NO.22B

