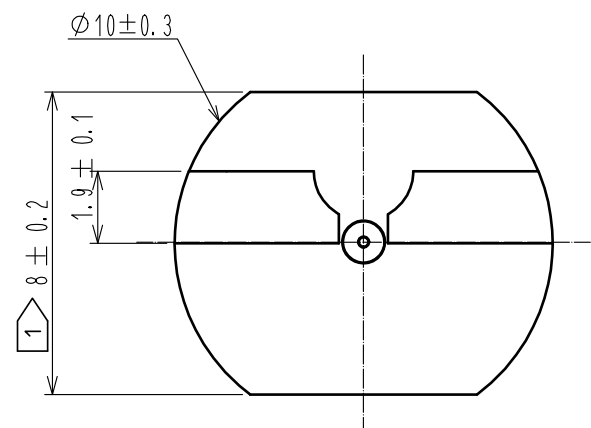
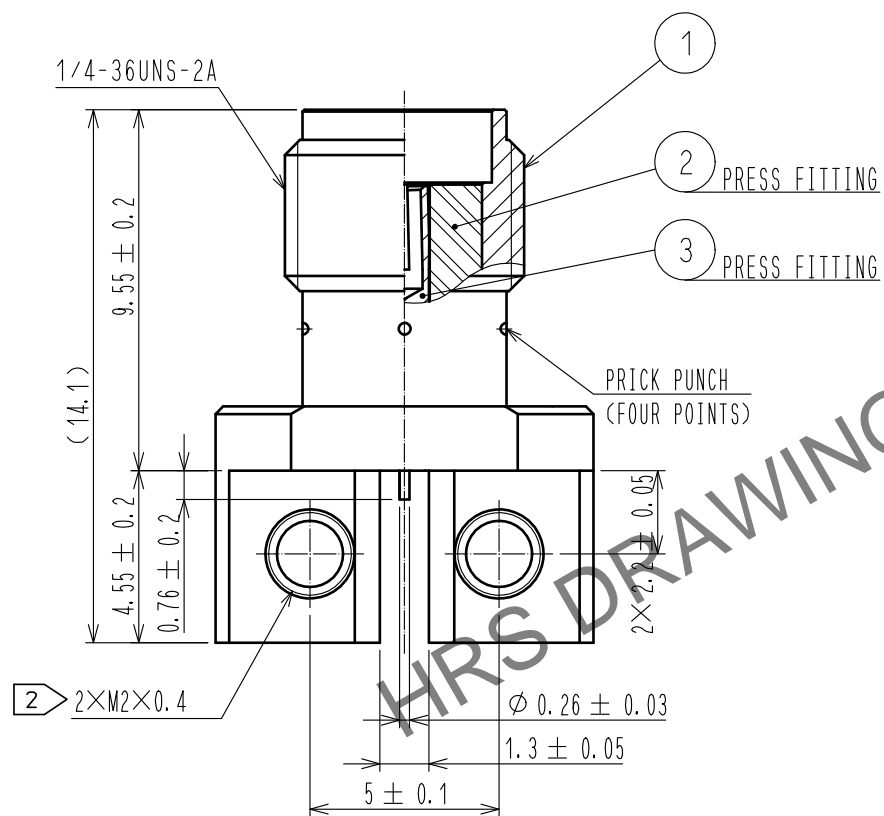
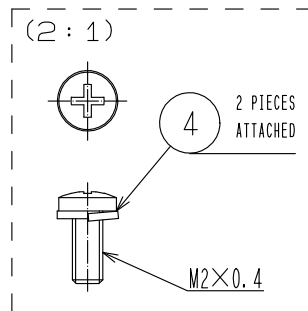
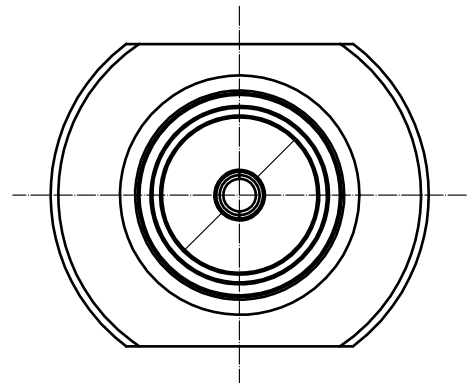


Aug.1.2024 Copyright 2024 HIROSE ELECTRIC CO., LTD. All Rights Reserved.  
In case of consideration for using Automotive equipment / device which demand high reliability, kindly contact our sales window correspondents.

Metric screw thread type

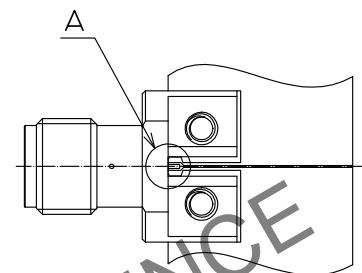
Attached screw thread



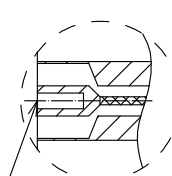
- NOTES
- 1 WHEN THE MATING CONNECTOR, PLEASE HOLD MILLING AREA OF  $8 \pm 0.2$  WITH A WRENCH.
  - 2  $M2 \times 0.4$  SCREW TIGHTENING TORQUE IS  $0.18 \text{ N} \cdot \text{m}$   
PLEASE TIGHTEN THE SCREWS EVENLY WHEN MOUNTING THE CONNECTORS TO ENSURE STABLE ELECTRICAL CONTACT.
  - 3 PLEASE USE ATTACHED SCREW FOR PCB MOUNTING. ATTACHED SCREW APPLY PCB THICKNESS  $T=0.7$  TO  $1.5 \text{ mm}$ .
  - 4 THIS PRODUCT IS A SOLDERLESS MOUNTED CONNECTOR FOR PROTOTYPE EVALUATION OF HIGH SPEED TRANSMISSION BOARDS.  
IT IS NOT RECOMMENDED FOR USE IN ACTUAL COMMERCIAL EQUIPMET.

MOUNTING OF CONNECTOR

- (1) WHEN THE CONNECTOR IS MOUNTED ON PCB, PLEASE DO NOT BE A GAP BETWEEN THE EDGE OF PCB AND CONNECTOR.
- (2) PLEASE MOUNT THE CONNECTOR AS LOCATED IN THE MIDDLE OF THE SIGNAL PAD OF PCB.
- 1 (DELETED ARTICLE.)

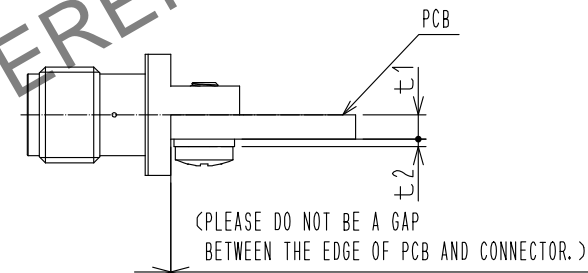
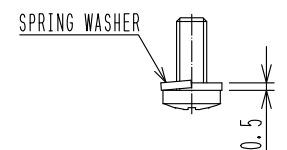


A(10:1)

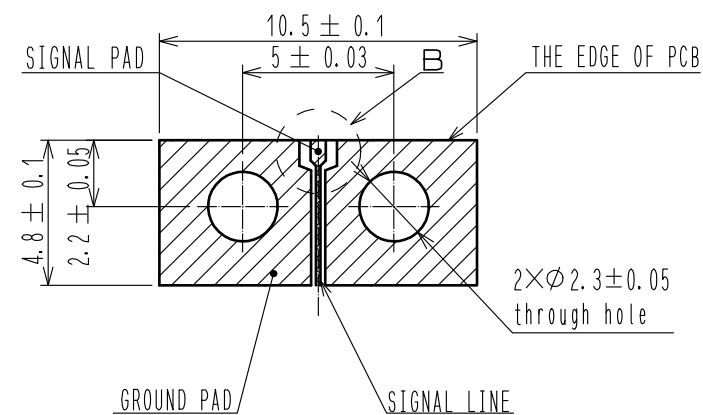


(PLEASE MOUNT THE CONNECTOR AS LOCATED IN THE MIDDLE OF THE SIGNAL PAD OF PCB.)

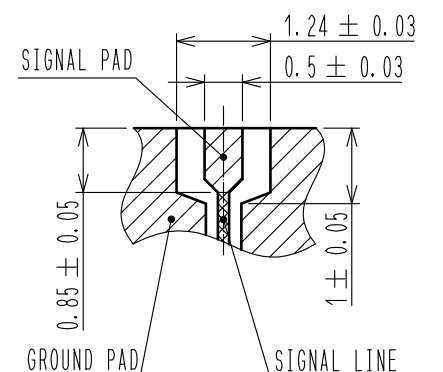
3  $M2 \times 0.4$  SCREW OUTSIDE DRAWING



RECOMMENDED PC BOARD PATTERN DRAWING(4:1)



B(10:1)



PLEASE DESIGN THE SIGNAL PAD AND SIGNAL LINE WITH  $50 \Omega$ .  
REGIST FOR SIGNAL PAD AND GROUND PAD IS PROHIBITED.

RoHS COMPLIANT

2	PTFE		4	STAINLESS STEEL	M2X0.4 SCREW WITH SPRING WASHER
1	BRASS	GOLD PLATING	3	BERYLLIUM COPPER	GOLD PLATING
NO.	MATERIAL	FINISH . REMARKS	NO.	MATERIAL	FINISH . REMARKS
UNITS mm		SCALE 5 : 1	COUNT 2	DESCRIPTION OF REVISIONS DIS-D-00016447	DESIGNED NM. TORIUMI
HIROSE ELECTRIC CO., LTD.		APPROVED : TO. KATAYAMA	20180905	DRAWING NO.	EDC-339102-01-00
		CHECKED : TO. KATAYAMA	20180905	PART NO.	HRM(G)-300-467B-2(01)
		DESIGNED : RO. YOKOYAMA	20180905	CODE NO.	CL0323-0923-5-01
		DRAWN : ST. KISHI	20180905		