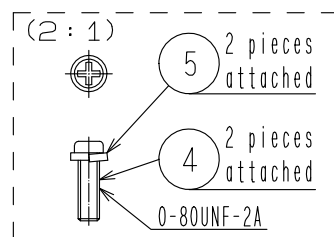
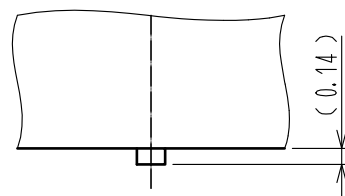


Aug.1.2024 Copyright 2024 HIROSE ELECTRIC CO., LTD. All Rights Reserved.
In case of consideration for using Automotive equipment / device which demand high reliability, kindly contact our sales window correspondents.

Unified screw thread type

Attached screw thread

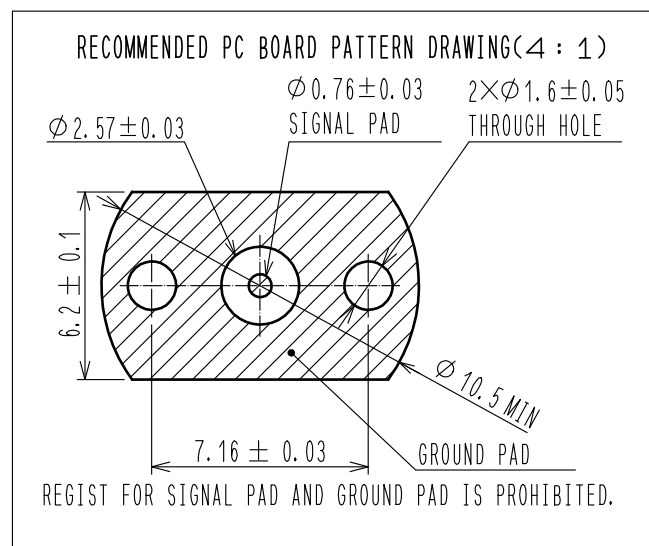
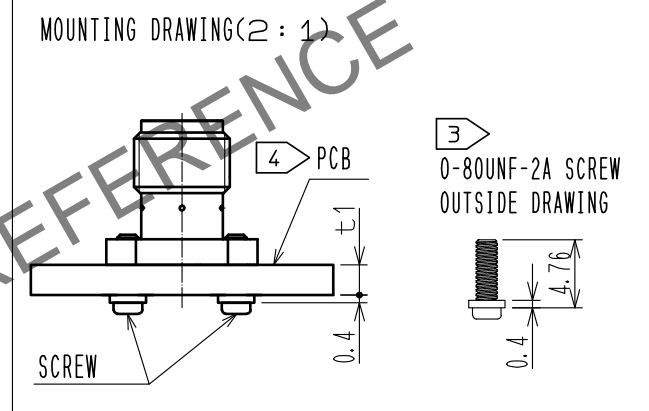
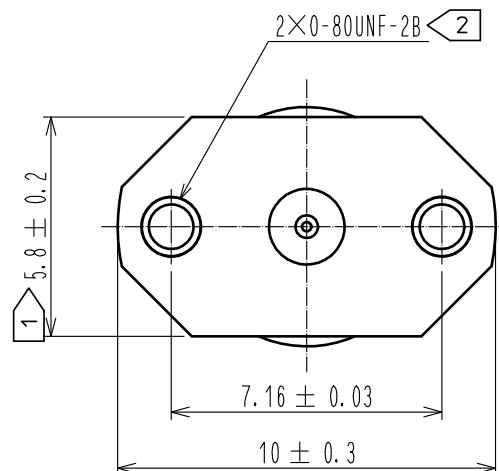
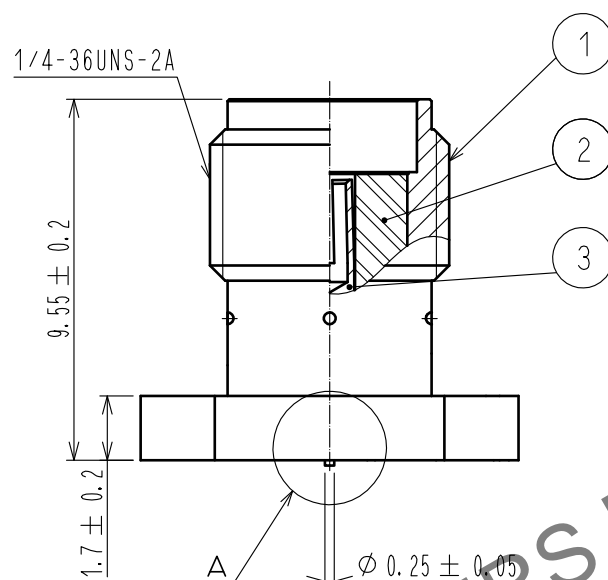
A(10:1)



- NOTES
- When the mating connector, please hold milling area of 5.8 ± 0.2 with a wrench.
 - 0-80UNF-2B Screw tightening torque is $0.09\text{N} \cdot \text{m}$.
Please tighten the screws evenly when mounting the connectors to ensure stable electrical contact.
 - Please use attached screw and washer for PCB mounting.
Attached screw and washer apply PCB thickness $t_1=0.7$ to 2.65mm .

(Deleted article.)

4. This product is a solderless mounted connector for prototype evaluation of high speed transmission board.
It is not recommended for use in actual commercial equipment.



RoHS COMPLIANT

3	BERYLLIUM COPPER	GOLD PLATING	5	STAINLESS STEEL	Spring washer
2	PTFE		4	STEEL	0-80UNF-2A Screw
1	BRASS	GOLD PLATING			
NO.	MATERIAL	FINISH . REMARKS	NO.	MATERIAL	FINISH . REMARKS
UNITS mm		SCALE 5 : 1	COUNT 2	DESCRIPTION OF REVISIONS DIS-D-00016695	DESIGNED NM. TORIUMI
HIROSE ELECTRIC CO., LTD.		APPROVED : TO. KATAYAMA	20170410	DRAWING NO.	EDC-339103-01-00
		CHECKED : TO. KATAYAMA	20170410	PART NO.	HRM(G)-300-468B-1(01)
		DESIGNED : RO. YOKOYAMA	20170410	CODE NO.	CL0323-0924-8-01
		DRAWN : RO. YOKOYAMA	20170410		
					DATE 20230824