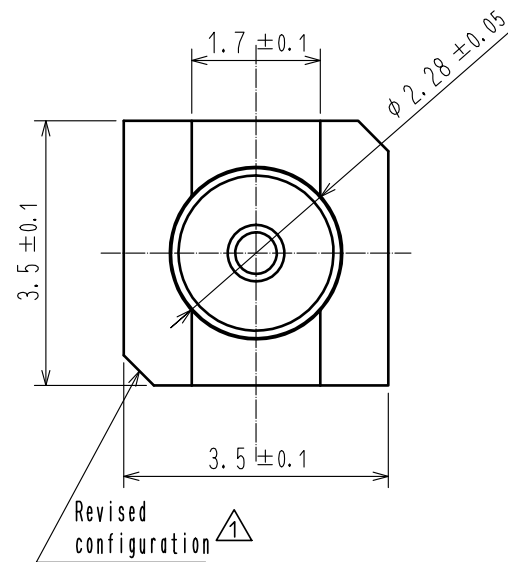
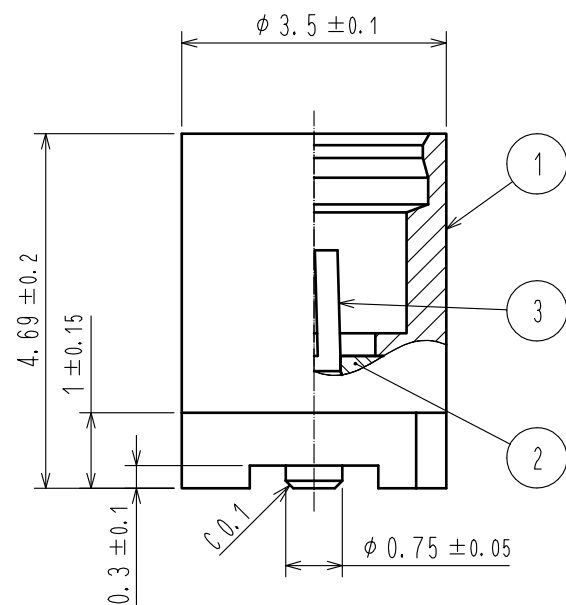
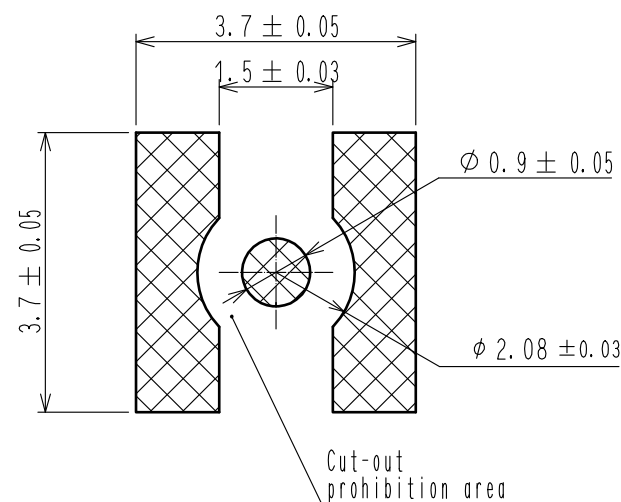


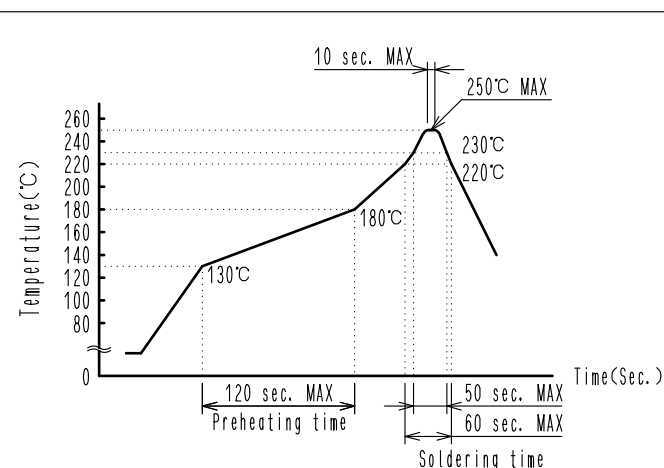
Aug.1.2024 Copyright 2024 HIROSE ELECTRIC CO., LTD. All Rights Reserved.
In case of consideration for using Automotive equipment / device which demand high reliability, kindly contact our sales window correspondents.



Recommended PCB layout
(Mounting surface side)



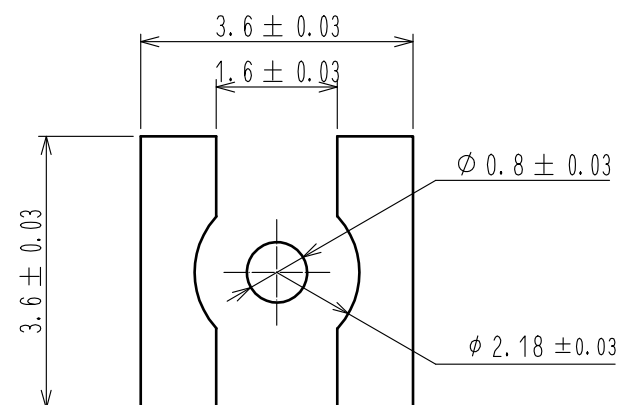
Reflow temperature profile using
lead-free solder paste (Reference)



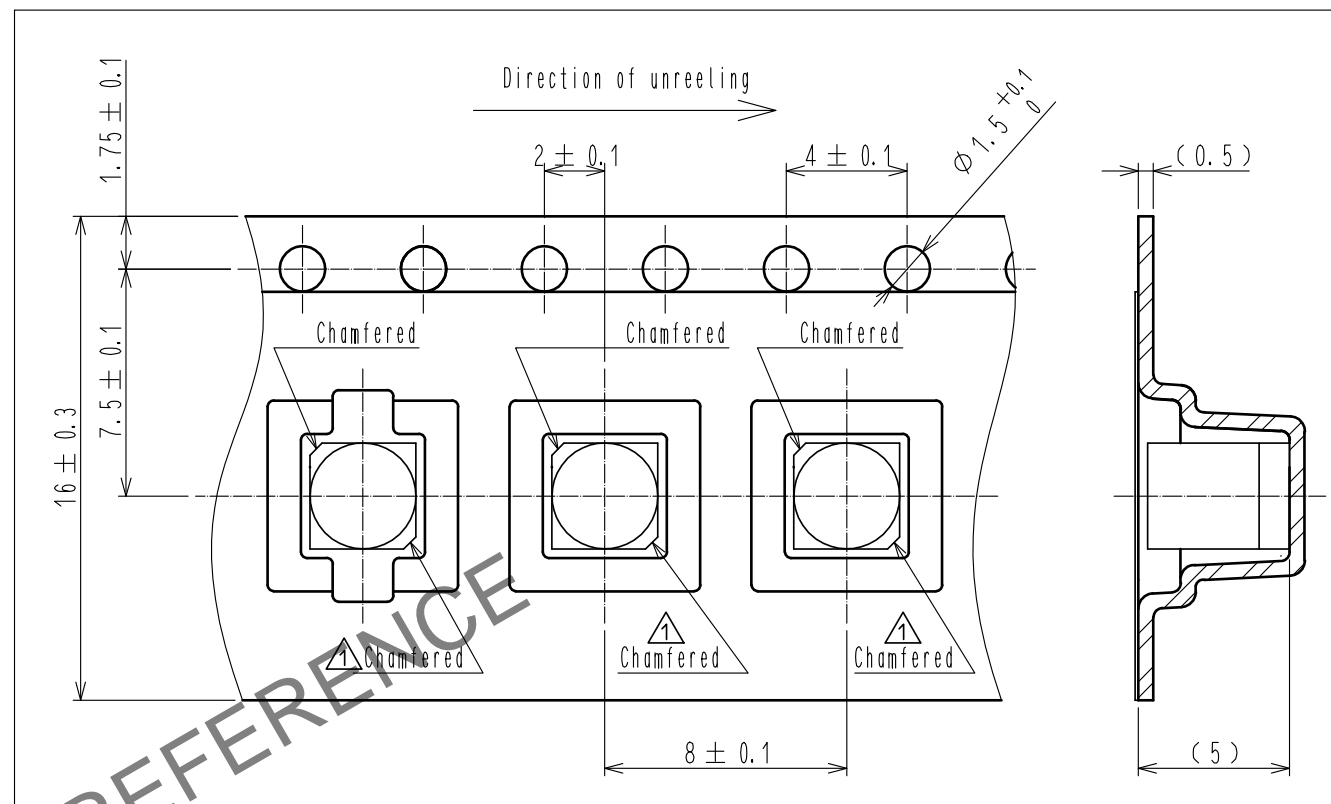
Reflow method : IR reflow
Number of Reflow cycles : 2 cycles MAX.
1)Reflow time
220°C, 60 sec. MAX.
230°C, 50 sec. MAX.
(Peak temperature 250°C, 10 sec. MAX.)
2)Pre-heat time
130°C to 180°C, 120 sec. MAX.

Mounting temperature profile varies according to
board size, solder type, and solder thickness.
Reflow temperature is measured at a center contact.

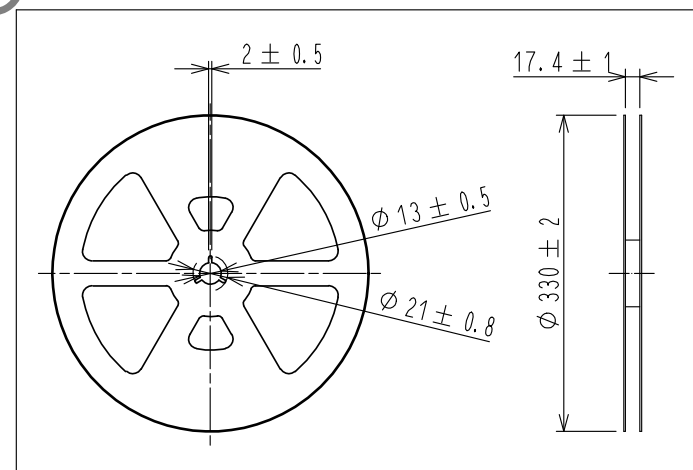
Recommended metal mask dimensions
Metal mask thickness : 0.12mm



Embossed taping drawing (4:1)

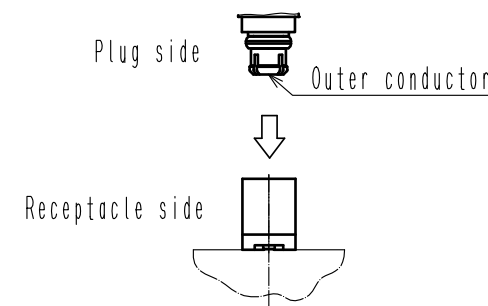


Reel drawing (FREE)
Material : PS (BLACK)

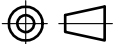





【 USAGE PRECAUTION 】

Please insert or extract a MMCX plug as
perpendicularly as possible to a mating surface
of a receptacle. If an insertion or extraction
is not performed perpendicularly, it could damage
or deform an outer conductor part of the plug.



Note. The quantity of MMCX-R-SMT-8 is 500 pieces per reel.

2	PTFE						
1	BRASS	GOLD PLATING			3	BERYLLIUM COPPER	GOLD PLATING
NO.	MATERIAL	FINISH , REMARKS			NO.	MATERIAL	FINISH , REMARKS
UNITS mm		SCALE 10 : 1	COUNT  4	DESCRIPTION OF REVISIONS DIS-D-00005305	DESIGNED TM. YOSHIDA	CHECKED TO. KATAYAMA	DATE 20201020
 HIROSE ELECTRIC CO., LTD.		APPROVED : TO. KATAYAMA	20181113	DRAWING NO.	EDC-372319-00-00		
		CHECKED : KY. SHIMIZU	20181113	PART NO.	MMCX-R-SMT-8		
		DESIGNED : TM. YOSHIDA	20181112	CODE NO.	CL339-0046-0-00		
		DRAWN : TM. YOSHIDA	20181112	 1			